

4th GRADE MINIMUM CONTENTS-NATURAL SCIENCE

UNIT 2: OUR SENSES – SIGHT

► SIGHT

Our **eyes** are our **sense** organs of sight. We use our eyes to see. They give us important information. We use them to see **colours, size, shape, position** and **distance**. We use some parts of the eye to see. Other parts are for protection.

- We use the **cornea, pupil, iris, lens, retina** and **optic nerve** to see.
- The **eyelids, the eyelashes** and **eyebrows** protect our eyes.

Eyelids protect the eyes by opening and closing.

Eyebrows and eyelashes protect the eyes from dirt.

Tears keep the eyes moist.

How does the light enter through the eyes?

1. Light passes through the **cornea**.

The cornea is transparent.

2 Then, light passes through the **pupil**.

The pupil is the hole in the centre of the iris.

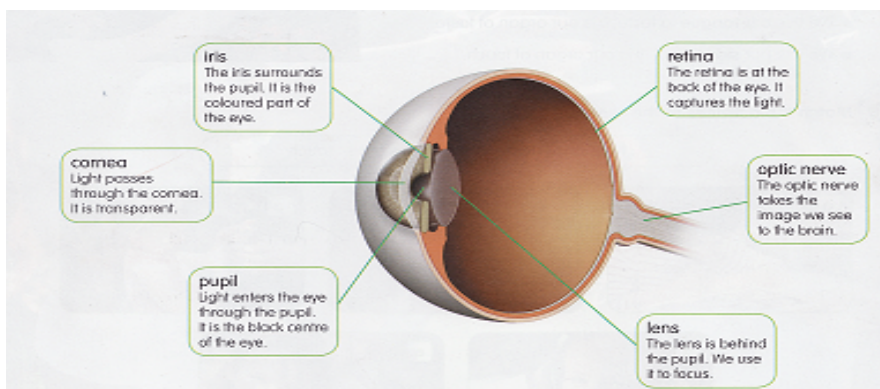
3. The level of light is controlled by the **iris**.

The iris is a coloured ring.

4. The **lens** helps the eye to focus.

5. Finally, the **retina** captures the light.

6. The **optic nerve** takes the image we see to the brain.



► SIGHT: DISORDERS OR DISEASES

Several disorders can affect our vision.

Short-sightedness is when we cannot see distant objects clearly.

Long-sightedness is difficulty in seeing objects close up.

Astigmatism is when our vision is blurred and distorted.

Sometimes our eyes are inflamed or we get an infection.

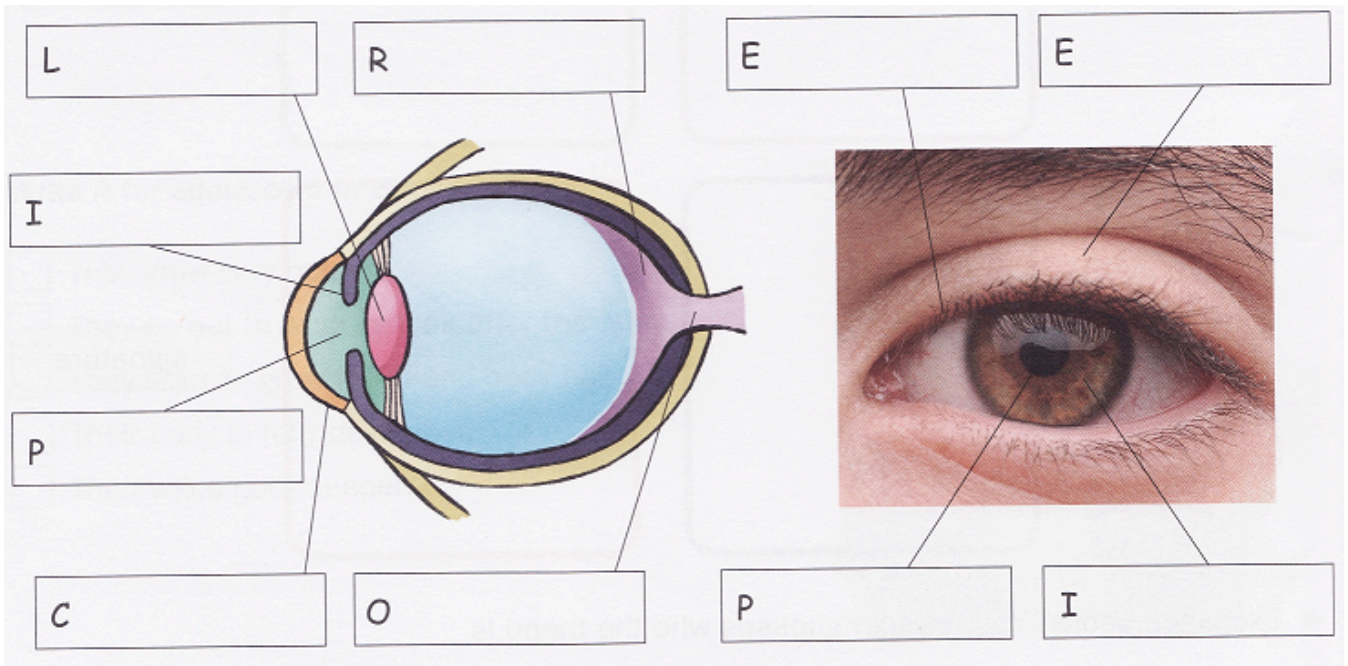
► LOOK AFTER YOUR EYES

- When you read, make sure there is lots of light.
- Never look directly at the Sun or at other sources of strong light.
- If you wear glasses, remember to put them on. In summer, wear sunglasses.
- When you watch television, sit about three metres from the screen.
- Visit an ophthalmologist once a year for an eye test.

UNIT 2: OUR SENSES - SIGHT

ACTIVITIES

1.- Label the diagrams of the inner eye and the outer eye.



2.- Read and match.

- | | |
|--|-------------|
| a. It surrounds the pupil. It is the coloured part of the eye. | Pupil |
| b. It is transparent. Light passes through it. | Optic nerve |
| c. It is behind the pupil. We use it to focus. | Lens |
| d. It is the black centre of the eye. | Retina |
| e. It takes the image we see to the brain. | Cornea |
| f. It is at the back of the eye. It captures the light. | Iris |

3.- Complete the parts of the eye and match them to the definitions.

- | | |
|----------------|---|
| a. _ r _ _ | We use it to focus. |
| b. _ _ t _ _ a | It takes the image we see to the brain. |

- c. _o_n__ It is the coloured part of the eye.
- d. o_t__ _e_v_ It captures the light.
- e. _u__l It is transparent and light passes through it.
- f. __n_ Light enters the eye through it.

4.- Cross out the mistakes and correct them.

- a. We use our eyelashes to see.
- b. Light enters our eyes through the retina.
- c. The pupil is the black centre of the eye.
- d. The iris is the coloured part of the eye.
- e. The retina is at the front of the eye.
- f. We use the lens to focus.

5.- Complete your bilingual dictionary.

SIGHT		
- Sight : _____	- Lens : _____	- Pupil : _____
- Eye : _____	- Retina : _____	- Pass through : _____
- Sense : _____	- Eyelids : _____	_____
- Organ : _____	- Eyelashes : _____	- Capture the light : _____
- Cornea : _____	- Eyebrows : _____	_____
- Optic nerve : _____	- Iris : _____	- Focus: _____
- Blurred: _____	- Short- sightedness: _____	- Long- sightedness: _____
- Astigmatism: _____	_____	_____