



**1** Unscramble the words and match them with the pictures.

- 1 suumme      2 ramcae      3 sked      4 eistchm's      5 fdleor

museum \_\_\_\_\_



**43** **2** Complete the sentences with *our*, *your* or *their*. Then listen and check.

- 1 It's my mobile phone and it's my sister's mobile phone. It's our mobile phone.
- 2 It's Ben's MP3 player and it's Carlota's MP3 player. It's \_\_\_\_\_ MP3 player.
- 3 It's your sharpener and it's his sharpener. It's \_\_\_\_\_ sharpener.
- 4 They're my scissors and they're Paul's scissors. They're \_\_\_\_\_ scissors.

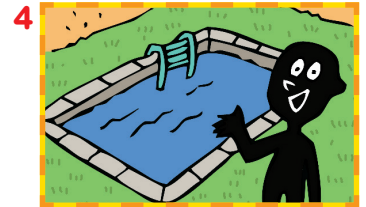
**44** **3** Listen and write *true* or *false*. Then correct the false sentences.

- 1 Meredith lives near a bookshop. True
- \_\_\_\_\_
- 2 She lives far from a library. \_\_\_\_\_
- \_\_\_\_\_
- 3 She lives far from a café. \_\_\_\_\_
- \_\_\_\_\_
- 4 Meredith lives near the cinema. \_\_\_\_\_
- \_\_\_\_\_

# Mission 2

## 1 Look and answer the questions.

Yesterday



1 Where were Noella and Yessy yesterday?

Noella and Yessy were at the airport yesterday.

2 Was Fussy at the shopping centre yesterday?

\_\_\_\_\_

3 Who was at the hotel yesterday?

\_\_\_\_\_

4 Were you at school yesterday? Where were you yesterday?

\_\_\_\_\_

## 2 Listen and draw.



## 3 Look and complete the sentences.

1 It's 98 kilometres from the library to the airport.

2 It's \_\_\_\_\_ from the \_\_\_\_\_ to \_\_\_\_\_.

3 It's \_\_\_\_\_ from \_\_\_\_\_ to \_\_\_\_\_.

4 It's \_\_\_\_\_

5 \_\_\_\_\_

98km - library - airport

10m - hotel - chemist's

45m - gym - toilet

13km - museum - café

87m - cinema - park