



This month's front cover image shows a natural colour, 2-metre QuickBird satellite image featuring the Horn of Africa country of Djibouti and its capital city of the same name. The image was collected on 9th October 2008. See page 6 for an interview with Chukwudozie Ezigbalike on spatial data for Africa.

(PHOTO COURTESY: DIGITAL GLOBE INC.)

GIM INTERNATIONAL

GIM International, the global magazine for geomatics, is published each month by Reed Business bv. The magazine and related e-newsletter provide topical overviews and accurately presents the latest news in geomatics, all around the world. *GIM International* is orientated towards a professional and managerial readership, those leading decision making, and has a worldwide circulation.

SUBSCRIPTIONS

GIM International is available monthly on a subscription basis. Subscription can commence at any time, by arrangement via our website or by contacting Customer Service. The annual subscription rate for *GIM International* is €140 within the European Union, and €200 for non-European countries. Subscriptions are automatically renewed upon expiry, unless Customer Service receives written notification of cancellation at least 30 days before expiry date. For multi-year subscription rates or information on current subscriptions contact Customer Service. customercontact@reedbusiness.nl

ADVERTISEMENTS

Information about advertisement rates and deadlines are available in the Media Planner. For more information please contact our account manager: victor.van.essen@reedbusiness.nl

EDITORIAL CONTRIBUTIONS

All material submitted to Reed Business bv and relating to *GIM International* will be treated as unconditionally assigned for publication under copyright subject to the editor's unrestricted right to edit and offer editorial comment. Reed Business bv assumes no responsibility for unsolicited material or for the accuracy of information thus received. Reed Business bv assumes, in addition, no obligation for return postage of material if not explicitly requested. Contributions must be sent for the attention of the editorial manager: boukje.vreman@reedbusiness.nl

REPRINTS

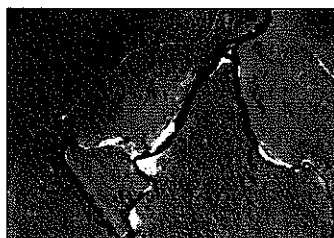
Printed copies of all articles (including articles published in earlier issues) can be ordered. For more information please contact: aliette.miedema@reedbusiness.nl



▶ INTERVIEW PAGE 6

Spatial Data for Africa

GIM International Interviews Chukwudozie Ezigbalike



FEATURE PAGE 13

Riparian Buffer Evaluation

Remote Sensing for Environmental Protection at CFB Gagetown



COMPANY'S VIEW PAGE 41

A Visual Sense of Presence

Zebra Imaging

FEATURE PAGE 18

▶ The Greater Wall of China

Remapping the Long Wall of 10,000 Li

FEATURE PAGE 35

▶ Data Lineage

An Essential Step in Data Processing

NEWS	PAGE
Business	25
Products	47
Advertisers Index	51
Web Connect	52
Agenda	61

INTERNATIONAL ORGANISATIONS	PAGE
FIG	55
ICA	57
ISPRS	59

COLUMNS	PAGE
Editorial	3
The Front Cover	5
Young Geo Column	9
Report	21
GIMasters and Disasters	31
Mailbox	63
Endpoint	65