



This month's cover shows work going on in the Gotthard Base Tunnel in Switzerland, at 57km the world's longest rail tunnel, and one that will cut the 3.5-hour travel time from Zürich to Milan by an hour, and from Zürich to Lugano to 1 hour 40 minutes. Opening is scheduled for 2017, see further page 31. (PHOTO COURTESY: BSF SWISSPHOTO)

GIM INTERNATIONAL

GIM International, the global magazine for geomatics, is published each month by Geomares Publishing. The magazine and related e-newsletter provide topical overviews and accurately presents the latest news in geomatics, all around the world. *GIM International* is orientated towards a professional and managerial readership, those leading decision making, and has a worldwide circulation.

PAID SUBSCRIPTIONS

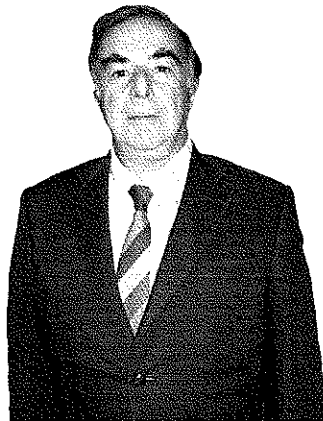
GIM International is available monthly on a subscription basis. The annual subscription rate for *GIM International* is €140 within the European Union, and €200 for non-European countries. Subscription can commence at any time, by arrangement via our website or by contacting Abonnementenland, a Dutch subscription administration company. Subscriptions are automatically renewed upon expiry, unless Abonnementenland receives written notification of cancellation at least 60 days before expiry date. Prices and conditions may be subject to change. For multi-year subscription rates or information on current paid subscriptions, contact Abonnementenland, Postbus 20, 1910 AA Uitgeest, Netherlands +31 (0)251-257926 (09.00-17.00 hrs, UTC +1) paidsubscription@geomares.nl.

ADVERTISEMENTS

Information about advertising and deadlines are available in the Media Planner. For more information please contact our account manager: victor.van.essen@geomares.nl.

EDITORIAL CONTRIBUTIONS

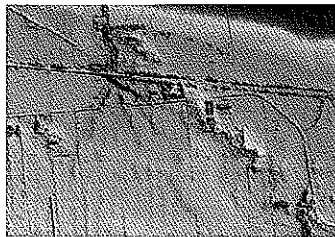
All material submitted to Geomares Publishing and relating to *GIM International* will be treated as unconditionally assigned for publication under copyright subject to the editor's unrestricted right to edit and offer editorial comment. Geomares Publishing assumes no responsibility for unsolicited material or for the accuracy of information thus received. Geomares Publishing assumes, in addition, no obligation to return material if not explicitly requested. Contributions must be sent for the attention of the editorial manager: wim.van.wegen@geomares.nl.



► **INTERVIEW PAGE 6**

Lost in Italy

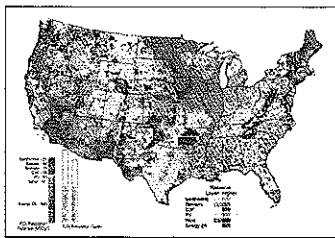
GIM International Interviews Renzo Carlucci



► **FEATURE PAGE 17**

Creating Digital Surface Models

Non-professionals at Work



► **FEATURE PAGE 21**

GIS and Renewable Energy Sources

Mappable Indicators

NEWS FEATURE PAGE 10

► **Trapped**

"We Are Well, in the Shelter, the 33 of Us"

► **FEATURE PAGE 13**

► **GIS4EU**

Harmonising Cross-border Datasets

► **INVITED REPLY PAGE 25**

► **To Charge or Not to Charge**

International Experts Speak Out

► **COMPANY'S VIEW PAGE 44**

► **Mining and Engineering Solutions**

Maptek

NEWS

PAGE

Business Report	31
Products	37
Advertisers Index	42
Web Connect	42
Agenda	46
	55

INTERNATIONAL ORGANISATIONS

PAGE

FIG	49
ICA	51
ISPRS	53

COLUMNS

PAGE

Editorial	3
GIMasters and Disasters	41
Endpoint	57