

The cover shows a Google satellite image overlaid with residential HEAT map overlaying a Colours range from cold (blue) to hot (red), based on average rooftop temperature. This map enables detailed comparison between houses in a neighbourhood. Page 13.

(PHOTO COURTESY: UNIVERSITY OF CALGARY, CANADA)

GIM INTERNATIONAL

GIM International, the global magazine for geomatics, is published each month by Geomares Publishing. The magazine and related e-newsletter provide topical overviews and accurately presents the latest news in geomatics; all around the world. *GIM International* is orientated towards a professional and managerial readership, those leading decision making, and has a worldwide circulation.

PAID SUBSCRIPTIONS

GIM International is available monthly on a subscription basis. The annual subscription rate for *GIM International* is €140 within the European Union, and €200 for non-European countries. Subscription can commence at any time, by arrangement via our website or by contacting Abonnementenland, a Dutch subscription administration company. Subscriptions are automatically renewed upon expiry, unless Abonnementenland receives written notification of cancellation at least 60 days before expiry date. Prices and conditions may be subject to change. For multi-year subscription rates or information on current paid subscriptions, contact Abonnementenland, Postbus 20, 1910 AA Uitgeest, Netherlands +31 (0)251-257926 (09.00-17.00 hrs, UTC +1) paidsubscription@geomares.nl

ADVERTISEMENTS

Information about advertising and deadlines are available in the Media Planner. For more information please contact our account manager: victor.van.essen@geomares.nl.

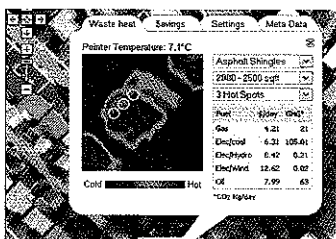
EDITORIAL CONTRIBUTIONS

All material submitted to Geomares Publishing and relating to *GIM International* will be treated as unconditionally assigned for publication under copyright subject to the editor's unrestricted right to edit and offer editorial comment. Geomares Publishing assumes no responsibility for unsolicited material or for the accuracy of information thus received. Geomares Publishing assumes, in addition, no obligation to return material if not explicitly requested. Contributions must be sent for the attention of the editorial manager: boukje.vreman@geomares.nl.



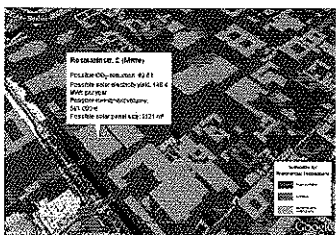
► **INTERVIEW PAGE 6**
A World Class African Land Information System

GIM International Interviews Marcelle Hattingh



FEATURE PAGE 13
Home Energy Assessment Technologies

Free Waste HEAT Footprints



FEATURE PAGE 17
Solar Atlas of Berlin

Airborne Lidar in Renewable Energy Applications

FEATURE PAGE 10
► **The Haiti Earthquake**
7.2 On the Richter Scale

FEATURE PAGE 35
► **Series on Capacity Building 1**
An ISPRS Perspective

COMPANY'S VIEW PAGE 38
► **From Trading to Manufacture and Research and Development**
Geo-allen

| NEWS | PAGE |
|-------------------|------|
| Business | 27 |
| Products | 41 |
| Advertisers Index | 41 |
| Web Connect | 44 |
| Agenda | 53 |

| INTERNATIONAL ORGANISATIONS | PAGE |
|-----------------------------|------|
| FIG | 47 |
| ICA | 49 |
| ISPRS | 51 |

| COLUMNS | PAGE |
|-------------------------|------|
| Editorial | 3 |
| The Front Cover | 5 |
| Report | 23 |
| GIMasters and Disasters | 33 |
| Mailbox | 55 |
| Endpoint | 57 |