

This month's front cover shows a satellite image used to inventory property boundaries in rural Ethiopia (courtesy: World Bank). Developing countries don't need accurate, expensive to measure boundaries, but adequate and cheap registration of rights. This is a special on cadastres, containing an Invited Reply on 'Beyond Cadastre 2014' (see July issue) and features treating 'Cadastral Modernisation in Libya' and 'Climate Change and the Cadastral Surveyor.'

GIM INTERNATIONAL

GIM International, the global magazine for geomatics, is published each month by Geomares Publishing. The magazine and related e-newsletter provide topical overviews and accurately presents the latest news in geomatics, all around the world. *GIM International* is orientated towards a professional and managerial readership, those leading decision making, and has a worldwide circulation.

PAID SUBSCRIPTIONS

GIM International is available monthly on a subscription basis. The annual subscription rate for *GIM International* is €140 within the European Union, and €200 for non-European countries. Subscription can commence at any time, by arrangement via our website or by contacting Abonnementenland, a Dutch subscription administration company. Subscriptions are automatically renewed upon expiry, unless Abonnementenland receives written notification of cancellation at least 60 days before expiry date. Prices and conditions may be subject to change. For multi-year subscription rates or information on current paid subscriptions, contact Abonnementenland, Postbus 20, 1910 AA Uitgeest, Netherlands +31 (0)251-257926 (09.00-17.00 hrs, UTC +1) paidsubscription@geomares.nl.

ADVERTISEMENTS

Information about advertising and deadlines are available in the Media Planner. For more information please contact our account manager: victor.van.essen@geomares.nl.

EDITORIAL CONTRIBUTIONS

All material submitted to Geomares Publishing and relating to *GIM International* will be treated as unconditionally assigned for publication under copyright subject to the editor's unrestricted right to edit and offer editorial comment. Geomares Publishing assumes no responsibility for unsolicited material or for the accuracy of information thus received. Geomares Publishing assumes, in addition, no obligation to return material if not explicitly requested. Contributions must be sent for the attention of the editorial manager: wim.van.wegen@geomares.nl.



INTERVIEW PAGE 6

The Property Story: Chapter Four

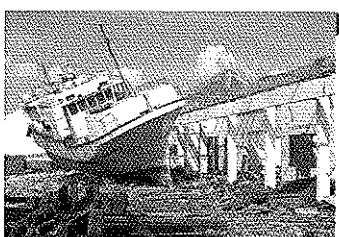
GIM International Interviews John McLaughlin



FEATURE PAGE 19

Increasing Climate Literacy

Climate Change and the Cadastral Surveyor



INVITED REPLY PAGE 41

Towards Cadastre 2034

International Experts Speak Out

NEWSFEATURE PAGE 12

► **Crowd Control**

From Crowd Management to Disaster Management

FEATURE PAGE 14

► **Yushu Earthquake Relief**

Applying Space Technology

FEATURE PAGE 29

► **Cadastral Modernisation**

Lybia's New Land Administration System

COMPANY'S VIEW PAGE 32

► **Forging a Place in the World**

SOUTH

NEWS

PAGE

Business	23
Products	36
Advertisers Index	38
Report	51
Web Connect	52
Agenda	63

INTERNATIONAL ORGANISATIONS

PAGE

FIG	57
ICA	59
ISPRS	61

COLUMNS

PAGE

Editorial	3
GIMasters and Disasters	55
Endpoint	65