



► **INTERVIEW PAGE 14**

## Keeping an Eye on the World

GIM International Interviews Adam Keith

This month's front cover shows a satellite image of Istanbul, at the centre of which the Golden Horn area of Turkey's largest city. Vegetation appears in red, urban areas blue-green. See page 21 for a feature on a geo-database for this area of the Turkish metropolis.

(PHOTO COURTESY: ASTER SCIENCE TEAM)

### GIM INTERNATIONAL

*GIM International*, the global magazine for geomatics, is published each month by Geomares Publishing. The magazine and related e-newsletter provide topical overviews and accurately presents the latest news in geomatics, all around the world. *GIM International* is orientated towards a professional and managerial readership, those leading decision making, and has a worldwide circulation.

### PAID SUBSCRIPTIONS

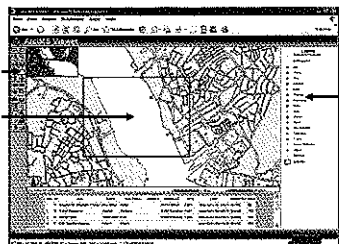
*GIM International* is available monthly on a subscription basis. The annual subscription rate for *GIM International* is €140 within the European Union, and €200 for non-European countries. Subscription can commence at any time, by arrangement via our website or by contacting Abonnementenland, a Dutch subscription administration company. Subscriptions are automatically renewed upon expiry, unless Abonnementenland receives written notification of cancellation at least 60 days before expiry date. Prices and conditions may be subject to change. For multi-year subscription rates or information on current paid subscriptions, contact Abonnementenland, Postbus 20, 1910 AA Uitgeest, Netherlands +31 (0)251-257926 (09.00-17.00 hrs, UTC +1) paidsubscription@geomares.nl.

### ADVERTISEMENTS

Information about advertising and deadlines are available in the Media Planner. For more information please contact our account manager: victor.van.essen@geomares.nl.

### EDITORIAL CONTRIBUTIONS

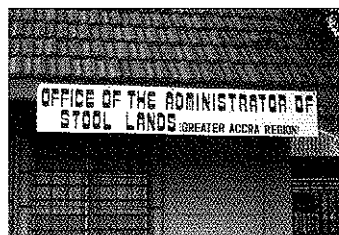
All material submitted to Geomares Publishing and relating to *GIM International* will be treated as unconditionally assigned for publication under copyright subject to the editor's unrestricted right to edit and offer editorial comment. Geomares Publishing assumes no responsibility for unsolicited material or for the accuracy of information thus received. Geomares Publishing assumes, in addition, no obligation to return material if not explicitly requested. Contributions must be sent for the attention of the editorial manager: wim.van.wegen@geomares.nl.



► **FEATURE PAGE 21**

## HIS: Golden Horn GIS

Access To Geo-data for the Millions



► **FEATURE PAGE 27**

## Customary Tenure and Good Governance

Implications for Land System Modelling

► **NEWS FEATURE PAGE 18**

### Contracting Cryosphere

Earth Warms as Sea Ice Retreats

► **FEATURE PAGE 32**

### Digital Floor Plans

Enabling Better Facility Management

► **FEATURE PAGE 37**

### SoftGIS Methodology

Building Bridges in Urban Planning

► **COMPANY'S VIEW PAGE 43**

### Growing Geomatics Services in Mexico

CartoData

### NEWS & OPINION

### PAGE

Insider's View	6
News	7
Endpoint	11

### INTERNATIONAL ORGANISATIONS

### PAGE

FIG	49
GSDI	51
ICA	53
ISPRS	55

### COLUMNS

### PAGE

Editorial	3
Report	36
GIMasters and Disasters	47

### OTHERS

### PAGE

Advertisers Index	45
Web Connect	48
Agenda	57