

The front cover of this first issue of GIM International in 2012 shows an oblique image of the city of Hradec Králové in the Czech Republic. On page 28, you will find an article on the use of GIS and three new indicators for spatial and strategic planning for the city, which is situated about 120 km east of the Czech capital, Prague.

(IMAGE COURTESY, GEODIS).

**GIM INTERNATIONAL**

GIM International, the global magazine for geomatics, is published each month by Geomares Publishing. The magazine and related e-newsletter provide topical overviews and accurately presents the latest news in geomatics, all around the world. GIM International is orientated towards a professional and managerial readership, those leading decision making, and has a worldwide circulation.

**PAID SUBSCRIPTIONS**

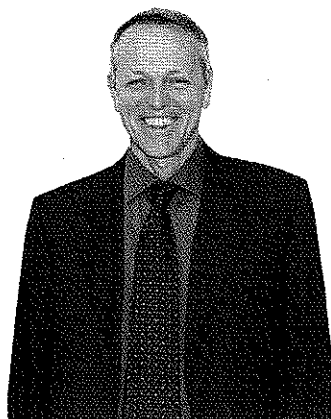
GIM International is available monthly on a subscription basis. The annual subscription rate for GIM International is €140 within the European Union, and €200 for non-European countries. Subscription can commence at any time, by arrangement via our website or by contacting Abonnementenland, a Dutch subscription administration company. Subscriptions are automatically renewed upon expiry, unless Abonnementenland receives written notification of cancellation at least 60 days before expiry date. Prices and conditions may be subject to change. For multi-year subscription rates or information on current paid subscriptions, contact Abonnementenland, Postbus 20, 1910 AA Uitgeest, Netherlands +31 (0)251-257926 (09.00-17.00 hrs, UTC +1) paidsubscription@geomares.nl

**ADVERTISEMENTS**

Information about advertising and deadlines are available in the Media Planner. For more information please contact our account manager: victor.van.essen@geomares.nl.

**EDITORIAL CONTRIBUTIONS**

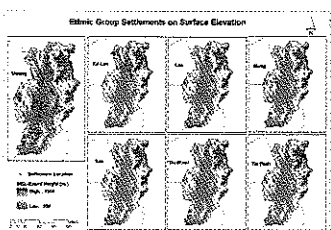
All material submitted to Geomares Publishing and relating to GIM International will be treated as unconditionally assigned for publication under copyright subject to the editor's unrestricted right to edit and offer editorial comment. Geomares Publishing assumes no responsibility for unsolicited material or for the accuracy of information thus received. Geomares Publishing assumes, in addition, no obligation to return material if not explicitly requested. Contributions must be sent for the attention of the editorial manager: wim.van.wegen@geomares.nl.



▶ **INTERVIEW PAGE 14**

**Alessandro Annoni Talks in Terms of Challenges**

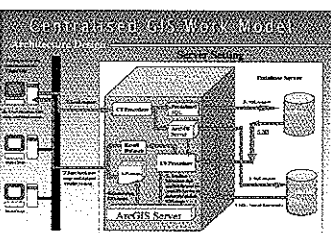
Impact of INSPIRE Starting to Become Visible



▶ **FEATURE PAGE 19**

**Settlement Patterns of Ethnic Groups**

A GIS-based Method



▶ **FEATURE PAGE 23**

**WebGIS Performance Tests**

Distributed and Centralised Work Models

**FEATURE PAGE 28**

▶ **Spatially Enabled Sustainability Indicators**

Strategic Planning Tools in Practice in a Czech City

**COMPANY'S VIEW PAGE 32**

▶ **Comprehensive GNSS Solutions for International Customers**

KQ Geo Technologies

**NEWS & OPINION**

	<b>PAGE</b>
Insider's View	6
News	7
Endpoint	11

**INTERNATIONAL ORGANISATIONS**

	<b>PAGE</b>
FIG	39
GSDI	41
IAG	43
ICA	45
ISPRS	47

**COLUMNS**

	<b>PAGE</b>
Editorial	3

**OTHER**

Web Connect	37
Advertisers Index	49
Agenda	49