

The photo was taken in the Rhodope Mountains, Bulgaria, at 41°55'25.50"N 23°36'35.17"E. Villagers living high up in the mountains use horses and carts for transport since many of the roads are impassable for cars. Although the measurement period for the design of new roads lasted just two months, these included the weather conditions typical for all four seasons.

(PHOTO COURTESY, TRUENORTH, BULGARIA)

**GIM INTERNATIONAL**

*GIM International*, the global magazine for geomatics, is published each month by Geomares Publishing. The magazine and related e-newsletter provide topical overviews and accurately presents the latest news in geomatics, all around the world. *GIM International* is orientated towards a professional and managerial readership, those leading decision making, and has a worldwide circulation.

**PAID SUBSCRIPTIONS**

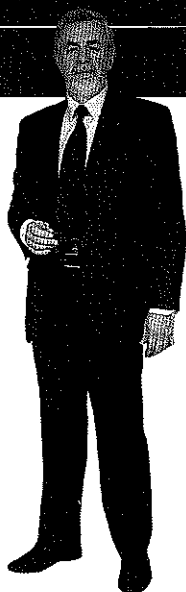
*GIM International* is available monthly on a subscription basis. The annual subscription rate for *GIM International* is €140 within the European Union, and €200 for non-European countries. Subscription can commence at any time, by arrangement via our website or by contacting Abonnementenland, a Dutch subscription administration company. Subscriptions are automatically renewed upon expiry, unless Abonnementenland receives written notification of cancellation at least 60 days before expiry date. Prices and conditions may be subject to change. For multi-year subscription rates or information on current paid subscriptions, contact Abonnementenland, Postbus 20, 1910 AA Uitgeest, Netherlands +31 (0)251-257926 (09.00-17.00 hrs, UTC +1) paidsubscription@geomares.nl.

**ADVERTISEMENTS**

Information about advertising and deadlines are available in the Media Planner. For more information please contact our sales manager: victor.van.essen@geomares.nl.

**EDITORIAL CONTRIBUTIONS**

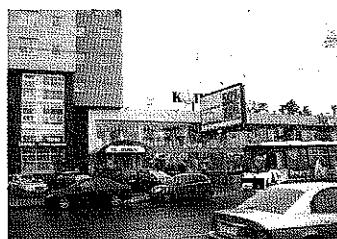
All material submitted to Geomares Publishing and relating to *GIM International* will be treated as unconditionally assigned for publication under copyright subject to the editor's unrestricted right to edit and offer editorial comment. Geomares Publishing assumes no responsibility for unsolicited material or for the accuracy of information thus received. Geomares Publishing assumes, in addition, no obligation to return material if not explicitly requested. Contributions must be sent for the attention of the editorial manager: wim.van.wegen@geomares.nl.



▶ **INTERVIEW PAGE 14**

**From Imagery to Map**

GIM International Interviews Victor Adrov



▶ **FEATURE PAGE 18**

**3D Cadastre Modelling in Russia**

Assessment of Added Value



▶ **FEATURE PAGE 31**

**3D Online: Crowdsourcing for City Planning**

Encouraging Public Involvement in Sweden

**FEATURE PAGE 23**

▶ **A Mindset Change in Laser Scanning Management**

Bringing Lidar Data to the Geospatial Community

**REPORT PAGE 35**

▶ **SMART Geospatial Expo 2012**

**COMPANY'S VIEW PAGE 36**

▶ **Custom Products for Aerial Surveys & Mobile Mapping**

IGI

**NEWS & OPINION PAGE**

Insider's View	6
News	7
Endpoint	13

**INTERNATIONAL ORGANISATIONS PAGE**

FIG	39
GSDI	41
IAG	43
ICA	45
ISPRS	47

**COLUMNS PAGE**

Editorial	3
-----------	---

**OTHER PAGE**

Advertisers Index	49
Agenda	49
Web Connect	50