



This month's front cover shows researchers Dave Finnegan and Ananda Fowler interpreting Terrestrial Lidar data as the RIEGL VZ-6000 scans Helheim Glacier in Southeast Greenland. On page 20 you will find their article on scanning glaciers with a long-range scanner.

**GIM INTERNATIONAL**

*GIM International*, the global magazine for geomatics, is published each month by Geomares Publishing. The magazine and related e-newsletter provide topical overviews and accurately presents the latest news in geomatics, all around the world. *GIM International* is orientated towards a professional and managerial readership, those leading decision making, and has a worldwide circulation.

**PAID SUBSCRIPTIONS**

*GIM International* is available monthly on a subscription basis. The annual subscription rate for *GIM International* is €140 within the European Union, and €200 for non-European countries. Subscription can commence at any time, by arrangement via our website or by contacting Abonnementenland, a Dutch subscription administration company. Subscriptions are automatically renewed upon expiry, unless Abonnementenland receives written notification of cancellation at least 60 days before expiry date. Prices and conditions may be subject to change. For multi-year subscription rates or information on current paid subscriptions, contact Abonnementenland, Postbus 20, 1910 AA Uitgeest, Netherlands +31 (0)251-257926 (09.00-17.00 hrs, UTC +1) paidsubscription@geomares.nl

**ADVERTISEMENTS**

Information about advertising and deadlines are available in the Media Planner. For more information please contact our sales manager: victor.van.essen@geomares.nl.

**EDITORIAL CONTRIBUTIONS**

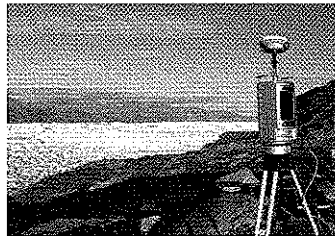
All material submitted to Geomares Publishing and relating to *GIM International* will be treated as unconditionally assigned for publication under copyright subject to the editor's unrestricted right to edit and offer editorial comment. Geomares Publishing assumes no responsibility for unsolicited material or for the accuracy of information thus received. Geomares Publishing assumes, in addition, no obligation to return material if not explicitly requested. Contributions must be sent for the attention of the editorial manager: wim.van.wegen@geomares.nl.



► INTERVIEW PAGE 14

**Space Geodesy Pioneer**

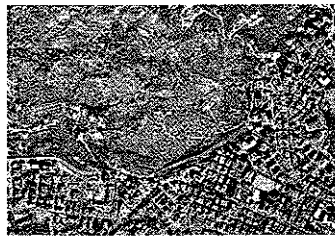
GIM International Interviews Reiner Rummel



► FEATURE PAGE 20

**Scanning Glaciers with a Long-range Scanner**

Pushing the Limits



► FEATURE PAGE 27

**Mapping a Landslide Using UAS**

Experiences with UAS (2)

► FEATURE PAGE 31

**GNSS for Sea Trials**

Measuring Ship Controllability

► COMPANY'S VIEW PAGE 35

**Surveying and Positioning Systems**

North Group

**NEWS & OPINION**

Insider's View	6
News	7
Endpoint	13

**INTERNATIONAL ORGANISATIONS**

FIG	39
GSDI	41
IAG	43
ICA	45
ISPRS	47

**COLUMNS**

Editorial	3
-----------	---

**OTHER**

Advertisers Index	49
Agenda	49