



Junta de Andalucía  
Agricultura, Pesca, Agua y  
Desarrollo Rural

RED DE ALERTA E  
INFORMACIÓN FITOSANITARIA









### DISTRIBUCIÓN TERRITORIAL DE LAS ZONAS BIOLÓGICAS

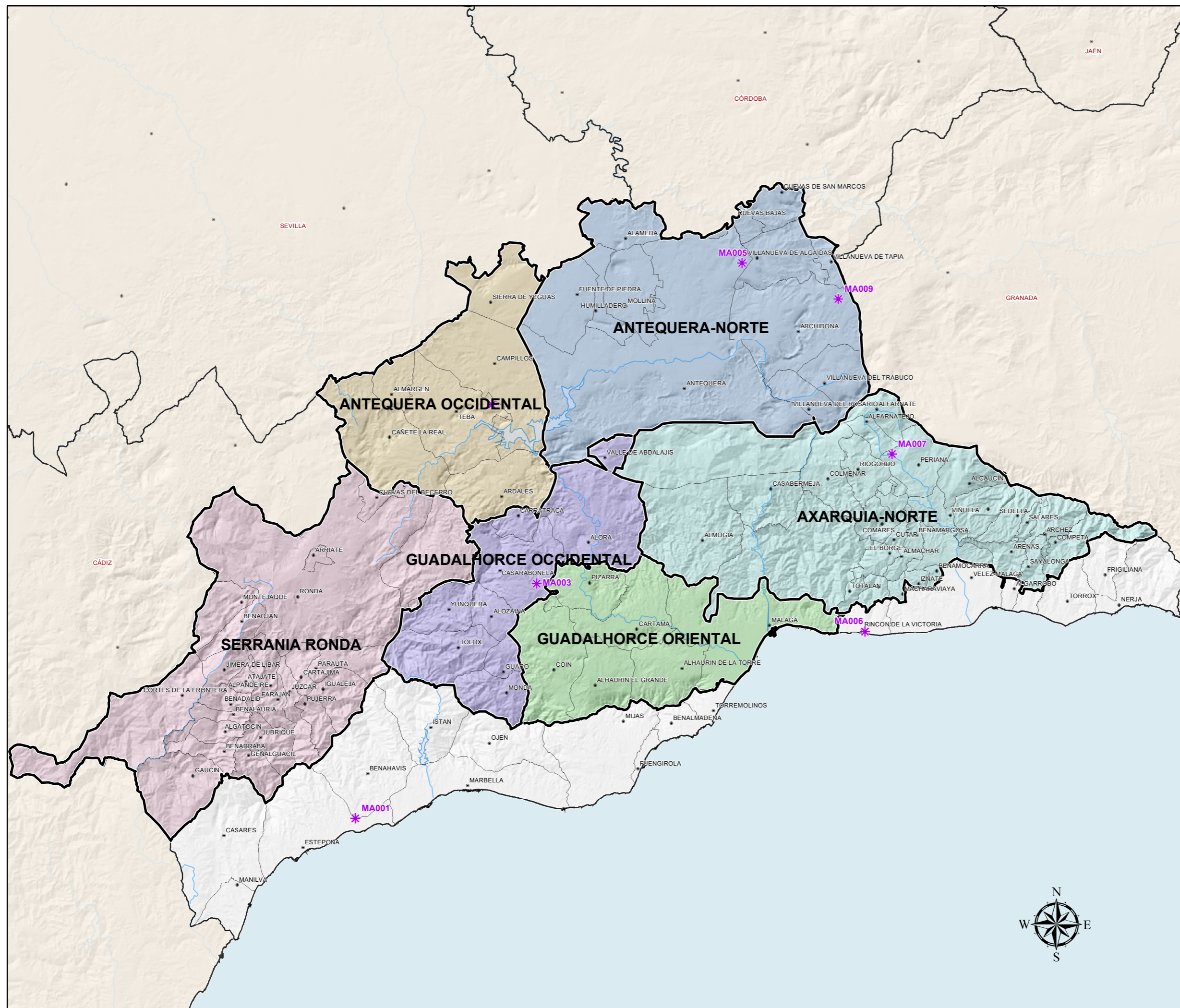
CULTIVO: OLIVAR

ÁMBITO: MÁLAGA



### Zonas Biológicas de Olivar

-  ANTEQUERA OCCIDENTAL
-  ANTEQUERA-NORTE
-  AXARQUIA-NORTE
-  GUADALHORCE OCCIDENTAL
-  GUADALHORCE ORIENTAL
-  SERRANIA RONDA
-  Superficie no integrada en la Red de Olivar
-  Estaciones meteorológicas



Escala: 1:510.000