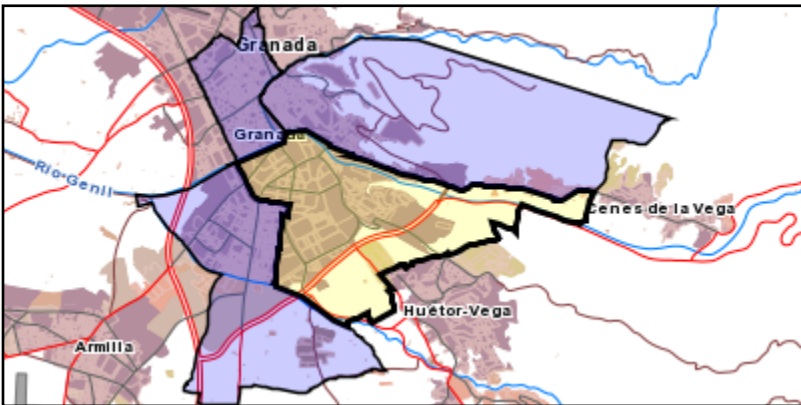
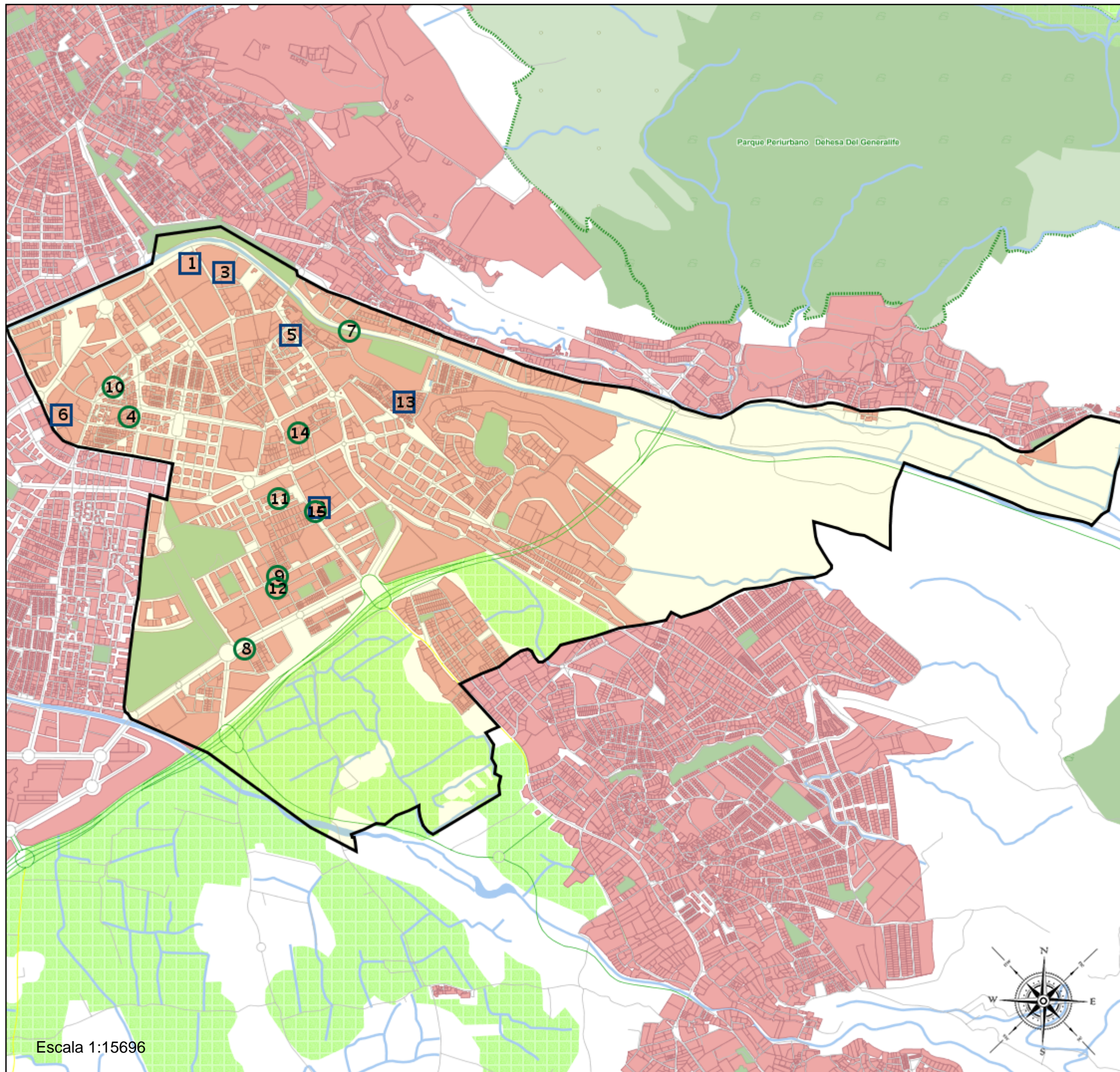


Granada_I_P_08
18087_18_CGTA_8_ZAIDÍN_I_P_08 (Segundo Cic. Infantil/Primaria)

- (1) 18002841 - C.D.P. Dulce Nombre de María
- (2) 18002851 - C.D.P. Inmaculada Niña
- (3) 18003031 - C.D.P. Sagrado Corazón
- (4) 18003442 - C.E.I.P. Andrés Segovia
- (5) 18003879 - C.D.P. Ave María-La Quinta
- (6) 18004197 - C.D.P. Caja General de Ahorros
- (7) 18004495 - C.E.I.P. Virgen de las Nieves
- (8) 18008968 - C.E.I.P. Sierra Nevada
- (9) 18009808 - C.E.I.P. Alcazaba
- (10) 18010264 - C.E.I.P. Parque de las Infantas
- (11) 18010276 - C.E.I.P. García Lorca
- (12) 18601059 - C.E.I.P. Abencerrajes
- (13) 18601621 - C.D.P. Virgen Madre II
- (14) 18601679 - C.E.I.P. Sancho Panza
- (15) 18601977 - C.C. Belén



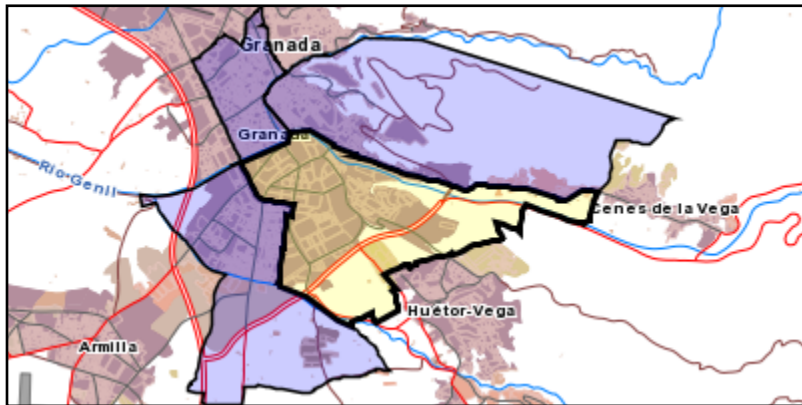
Leyenda

- Centros públicos
- Centros concertados



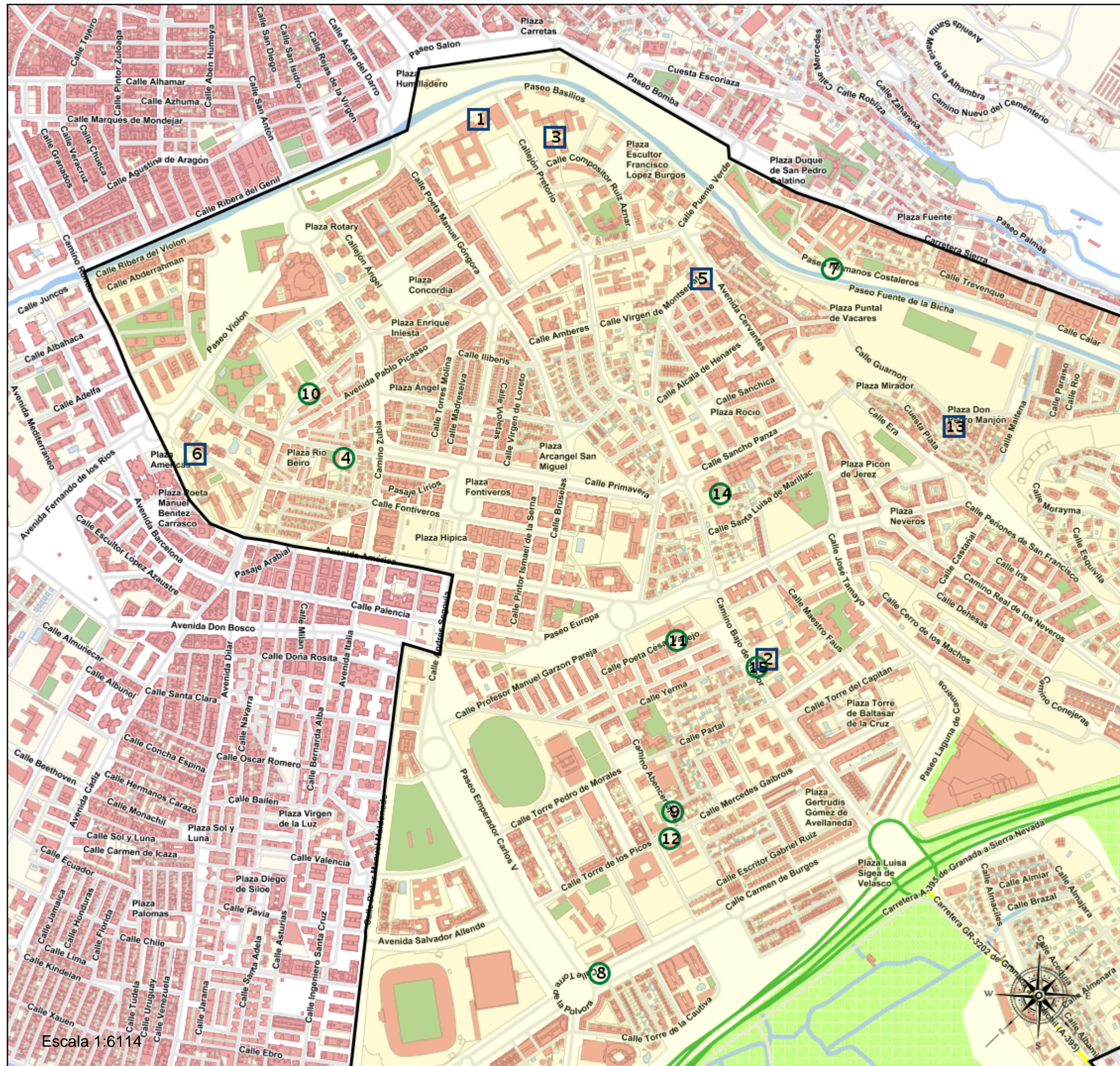
Granada_I_P_08
 18087_18_CGTA_8_ZAIDÍN_I_P_08 (Segundo Cic. Infantil/Primaria)

- (1) 18002841 - C.D.P. Dulce Nombre de María
- (2) 18002851 - C.D.P. Inmaculada Niña
- (3) 18003031 - C.D.P. Sagrado Corazón
- (4) 18003442 - C.E.I.P. Andrés Segovia
- (5) 18003879 - C.D.P. Ave María-La Quinta
- (6) 18004197 - C.D.P. Caja General de Ahorros
- (7) 18004495 - C.E.I.P. Virgen de las Nieves
- (8) 18008968 - C.E.I.P. Sierra Nevada
- (9) 18009808 - C.E.I.P. Alcazaba
- (10) 18010264 - C.E.I.P. Parque de las Infantas
- (11) 18010276 - C.E.I.P. García Lorca
- (12) 18601059 - C.E.I.P. Abencerrajes
- (13) 18601621 - C.D.P. Virgen Madre II
- (14) 18601679 - C.E.I.P. Sancho Panza
- (15) 18601977 - C.C. Belén



Leyenda

- Centros públicos
- Centros concertados



INFORME DE VIALES DE GRANADA

NOMBRE NORMALIZADO: Granada_I_P_08

NOMBRE ÁREA DE INFLUENCIA: 18087_18_CGTA_8_ZAIDÍN_I_P_08

Centros del área:

- 18002841 - C.D.P. Dulce Nombre de María
- 18002851 - C.D.P. Inmaculada Niña
- 18003031 - C.D.P. Sagrado Corazón
- 18003442 - C.E.I.P. Andrés Segovia
- 18003879 - C.D.P. Ave María-La Quinta
- 18004197 - C.D.P. Caja General de Ahorros
- 18004495 - C.E.I.P. Virgen de las Nieves
- 18008968 - C.E.I.P. Sierra Nevada
- 18009808 - C.E.I.P. Alcazaba
- 18010264 - C.E.I.P. Parque de las Infantas
- 18010276 - C.E.I.P. García Lorca
- 18601059 - C.E.I.P. Abencerrajes
- 18601621 - C.D.P. Virgen Madre II
- 18601679 - C.E.I.P. Sancho Panza
- 18601977 - C.C. Belén

Viales incluidos en el área

VIALES DE GRANADA	
Nombre de vía	Rango de portales
AVENIDA AMERICA	1, 3, 5, 7, 9, 11, 13, 15, 17, 19, 21, 23, 25, 27, 29, 31, 33, 35, 45, 46, 47, 48, 49, 50, 51, 52, 53, 54, 55, 56
AVENIDA CERVANTES	1, 2, 3, 4, 5, 6, 7, 8, 9, 10, 11, 12, 13, 14, 16, 17, 19, 20, 21, 22, 23, 24, 25, 27, 29
AVENIDA DILAR	1, 2, 3, 4, 5, 6, 7, 8, 9, 10, 11, 13, 15, 17
AVENIDA DON BOSCO	48
AVENIDA DUQUE DE SAN PEDRO GALATINO	1, 2, 3, 4, 5, 6, 7, 8, 9, 10, 11, 12, 13
AVENIDA PABLO PICASSO	1, 2, 3, 4, 5, 6, 7, 8, 9, 10, 11, 12, 13, 14, 15, 16, 17, 18, 19, 20, 21, 22, 23, 24, 25, 26, 27, 28, 30, 31, 32, 33, 35
AVENIDA SALVADOR ALLENDE	1, 2, 3, 4, 5, 7, 9, 11, 13
CALLE ABDERRAHMAN	1, 2, 3, 4, 5, 6, 7, 9, 11, 13, 15, 17, 19, 21, 23
CALLE ACEQUIA	1, 3, 4, 5, 6, 7, 8, 9, 10, 12, 14, 16, 18, 19, 20, 22, 24, 26, 28, 30, 32, 34
CALLE ACONCAGUA	2, 4, 6, 8, 10, 12, 14, 16, 18, 20, 22, 24, 26, 28, 30, 36, 38, 40, 42, 44, 46, 48, 50, 52, 54, 56, 58
CALLE ADINAMAR	2, 4, 6, 8, 10, 12, 14, 16, 18, 20, 22, 24, 26, 28, 30, 32, 33, 34, 35, 36, 37, 38, 39, 40, 41, 43, 45, 47, 49, 51, 53, 55
CALLE ADORMIDERA	1, 2, 4, 6, 8
CALLE AGUAS BRAVAS	1, 2, 4, 6, 8, 10, 12, 14, 16, 18, 20, 22, 24, 26, 28, 30
CALLE AGUSTIN LARA	1, 2, 3, 4, 5, 6, 7, 8, 9, 10, 11, 12, 13, 14, 15, 16, 17, 18, 19, 20, 21, 22, 23, 24, 25, 26, 27, 28, 29, 30, 31, 32, 33, 34, 36, 37, 38, 39, 41
CALLE AIXA BINDT	1, 2, 3, 4, 5, 6, 7, 8, 9, 10, 11, 12, 13, 14, 15, 16, 17, 18, 19, 20, 21, 22, 23, 25, 27, 29, 31, 33, 35, 37
CALLE AIXA LA HORRA	1, 2, 3, 4, 5, 6, 7, 8, 9, 11, 13, 17, 19, 21, 23
CALLE ALBANAR	2, 4, 6, 14, 16, 18, 20, 22
CALLE ALCALA DE HENARES	1, 2, 3, 4, 5, 6, 7, 8, 10, 12, 14, 16
CALLE ALCAZAR GENIL	1, 2, 3, 4, 6
CALLE ALFEIZAR	1, 2, 3, 4
CALLE ALHAMI	1, 2, 3, 4, 5, 6, 7, 8, 9, 10, 11, 12, 13, 14, 15, 16, 17, 18, 19, 20, 21, 22
CALLE ALIAGARES	2, 4, 6, 8, 10, 12, 14, 16, 18, 20, 22
CALLE ALMACILES	1, 2, 3, 5, 7, 9, 11, 13, 15, 17, 19, 21
CALLE ALMAGRE	1, 2, 3, 4, 6
CALLE ALMAJARA	1, 2, 3, 5, 7, 8, 9, 10, 11, 12, 13, 14, 15, 16, 17, 18, 19, 20, 21, 22, 23, 24, 25, 26, 27, 28, 29, 30, 32
CALLE ALMENARA	1, 2, 3, 4, 5, 6, 7, 8, 9, 10, 11, 12, 13, 15, 19

La información de viales se obtiene del Callejero Digital de Andalucía.

La información mostrada en el mapa prevalece sobre la información de viales.

INFORME DE VIALES DE GRANADA
NOMBRE NORMALIZADO: Granada_I_P_08
NOMBRE ÁREA DE INFLUENCIA: 18087_18_CGTA_8_ZAIDÍN_I_P_08

VIALES DE GRANADA	
Nombre de vía	Rango de portales
CALLE ALMIAR	1, 2, 3, 4, 5, 6, 7, 8, 9, 10, 11, 12, 13, 14, 15, 16, 17, 18, 19, 20, 21, 22, 23, 24, 25, 26, 28
CALLE ALMINARES DEL GENIL	1, 2, 3, 4, 5, 6, 7
CALLE ALMUNIA	1, 2, 3, 4, 6
CALLE ALONSO QUIJANO	1, 3, 5
CALLE AMAPOLAS	1, 2, 3, 4, 5, 6, 7, 8, 9, 11, 13
CALLE AMBERES	1, 2, 3, 4, 5, 6
CALLE ANDREA NAVAGIERO	1, 2, 3, 4, 6, 8, 10
CALLE ANDRES CALDERON	1, 2, 4
CALLE ANDRES SEGOVIA	1, 2, 3, 4, 5, 6, 7, 8, 9, 10, 11, 12, 13, 14, 15, 16, 17, 18, 19, 20, 21, 22, 23, 24, 25, 26, 27, 28, 29, 30, 31, 32, 33, 34, 35, 36, 37, 38, 39, 40, 41, 42, 43, 44, 45, 47, 49, 51, 53, 58, 60
CALLE ANTONIO DALMASES	1, 2, 3, 4, 7
CALLE ARENALES	1, 2, 3
CALLE ARQUITECTO TORRES BALBAS	1, 2, 3, 4, 5, 6
CALLE ASTROFISICA	2, 4
CALLE AVIADOR DAVILA	1, 2, 3, 4, 5, 6, 7, 8, 9
CALLE AZAHARA	1, 2, 3, 4, 6, 8
CALLE BACHILLER SANSON	1, 2, 3, 4, 5, 6, 7, 8, 9, 10, 11, 12, 14
CALLE BELEN SARRAGA	1, 3, 4, 5, 6, 7, 8, 9, 11, 13, 15, 17, 19, 21, 23
CALLE BELTENEBROS	1, 2, 3, 4, 6, 8
CALLE BERTA WILHELMI	1, 2, 3, 4, 5, 6, 7, 9, 11, 13, 15, 17
CALLE BLAS INFANTE	1, 2, 3, 4, 5, 6, 7, 8, 9, 10, 12
CALLE BORREGUILES	1, 2, 3, 4, 5, 6, 7, 8, 9, 10, 13, 15
CALLE BRAZAL	1, 2, 3, 4, 5, 6, 7, 8, 9, 11, 13, 15, 17, 19, 21, 23, 25, 27
CALLE BRUSELAS	1, 2, 3, 4, 5, 7, 8, 9, 10, 11, 12, 13, 14, 15, 16, 17, 18, 19, 20, 21, 22, 23, 24, 25, 27, 29, 30, 32, 34, 36, 37, 38, 41, 43
CALLE CALAR	1, 3, 5, 7, 9, 11, 13, 15, 17, 21, 23, 25, 51, 53, 55, 57
CALLE CALDERON DE LA BARCA	5, 7, 9
CALLE CARLOS TOMAS ROMERO	1, 2, 3, 4, 5, 6, 7, 8, 9, 10, 11, 12, 13, 14, 15, 16, 17, 19, 21
CALLE CARMEN DE BURGOS	1, 2, 3, 4, 5, 6, 7, 8, 9, 10, 11, 12, 13, 14, 15, 16, 17, 18, 19, 20, 21, 22, 23, 24, 25, 26, 27, 28, 29, 30, 31, 32, 33, 35, 37, 39, 40, 41, 42, 43, 44, 45, 46, 47, 48, 49, 50, 51, 52, 53, 54, 55, 56, 57, 58, 59, 60, 61, 62, 63, 64, 65, 66, 67, 68, 69, 70, 71, 72, 73, 74, 75
CALLE CARMEN TORTOLA	1, 2, 3, 4, 6
CALLE CASTAÑAL	1, 2, 4, 5, 6, 7, 8, 9, 10, 11, 12, 13, 15, 17
CALLE CERRO DE LOS MACHOS	1, 2, 3, 4, 5, 6, 8, 10, 12, 14, 16, 18, 20, 22, 24, 26, 32, 34, 36, 38, 55, 57
CALLE CERRO DEL CABALLO	1, 2, 4, 12, 14
CALLE CERRO DEL ESPINAR	1, 2, 3, 4, 6
CALLE CERRO ZUJEIRO	1, 2, 3, 4, 5, 6
CALLE CHARCON	100, 102, 104, 106, 108, 110
CALLE CHIMBORAZO	1, 3, 5, 7, 9, 11, 13, 15, 17, 19, 21, 23, 25, 27, 29, 31, 33, 35, 37, 39, 41, 91, 93, 95, 97, 99, 101
CALLE CLAVELLINA	1, 2, 4, 5, 6, 7, 8, 9, 10, 12
CALLE CLAVILEÑO	1, 2, 3, 4, 5, 6
CALLE COLLADO DE LAS SABINAS	2, 5, 11, 13, 15, 17, 19, 21, 23, 25, 27, 29
CALLE COMPOSITOR RUIZ AZNAR	1, 2, 3, 4, 6, 7, 8, 9, 10, 11, 12, 13, 14, 15, 16, 17, 18, 19, 20
CALLE CORRAL DEL VELETA	1, 2, 3, 4, 5, 6, 7, 9
CALLE CORRALON DE GANIVET	1, 2, 3, 4, 7, 9, 13, 15
CALLE CORTIJUELA	0, 1, 2, 3, 4, 5, 6, 7, 8, 10, 12
CALLE DEHESAS	1, 2, 3, 5, 7, 9, 11, 12, 13, 14, 15, 16, 17, 19, 21
CALLE DON QUIJOTE	2, 3, 4, 5, 6, 7, 8, 10, 12, 14
CALLE DORNAJO	1, 2, 3, 4, 5, 6, 7, 8, 10, 12, 13, 14, 15, 16, 17, 18, 19, 20, 21, 22, 23, 24, 26, 28

INFORME DE VIALES DE GRANADA
NOMBRE NORMALIZADO: Granada_I_P_08
NOMBRE ÁREA DE INFLUENCIA: 18087_18_CGTA_8_ZAIDÍN_I_P_08

VIALES DE GRANADA	
Nombre de vía	Rango de portales
CALLE DOROTEA	1, 2, 3, 4, 5, 6, 7, 8, 9, 11, 13
CALLE DULCINEA DEL TOBOSO	1, 2, 3, 4, 5, 6
CALLE ELORRIETA	1, 2, 3, 4, 5, 6, 7, 8, 9, 10, 11, 12, 14, 16
CALLE ENRIQUE GOMEZ ARBOLEYA	1, 2, 3, 4
CALLE ERA	0, 2, 4, 6, 8, 10, 12, 14, 16, 18, 20, 22, 24, 26, 28, 30, 32, 34, 36, 38, 40, 42, 44, 46, 48, 50, 54
CALLE ESCRITOR ANTONIO PORCEL	1, 2, 3, 4, 5, 6, 7, 8, 9, 10, 11, 12, 13, 15, 17, 19, 21, 23, 25, 27, 29
CALLE ESCRITOR BALTASAR MARTINEZ	1, 2, 4, 6
CALLE ESCRITOR GABRIEL RUIZ	1, 3, 5, 7, 9, 11, 13, 15, 17, 19
CALLE ESCRITOR NICOLAS DEL PASO	1, 2, 4
CALLE ESCULTOR JIMENEZ MESA	1, 2
CALLE ESCULTOR NAVAS PAREJO	1, 2, 3, 5, 7, 9
CALLE ESQUIVILA	1, 2, 3, 4, 5, 6, 7, 8, 9, 11, 13, 14, 15, 16, 17, 18, 19, 20, 21, 22, 24, 26, 28
CALLE ESTRELLA DE LAS NIEVES	1, 2, 3, 4, 5, 6, 7, 8, 9, 10
CALLE FLORENCIA	1, 2, 3, 4, 5, 7, 9, 10, 11, 12, 13, 14, 15, 16, 17, 18, 19, 20, 21, 22, 23, 24, 25, 27, 29
CALLE FONTIVEROS	1, 2, 3, 4, 5, 6, 7, 8, 9, 10, 11, 12, 13, 14, 15, 16, 17, 18, 19, 20, 21, 22, 23, 24, 25, 26, 27, 28, 29, 30, 31, 32, 34, 36, 38, 42, 44, 46, 48
CALLE FRANCISCO DE QUEVEDO	1, 2, 3, 4, 5, 6, 7, 8
CALLE FRANCISCO LOPEZ JURADO	1
CALLE GALATEA	1, 2, 3, 4, 5, 6, 7, 8, 9, 10, 11, 12, 13, 14, 15, 17, 19
CALLE GONZALO JIMENEZ DE QUESADA	1, 2, 3, 4, 5, 6, 7, 8, 10, 12, 14, 16
CALLE GRANADA	1, 3, 5, 7, 21, 23, 25, 27
CALLE GREGORIO SILVESTRE	1, 2, 3
CALLE GUARNON	1, 2, 3, 4, 5, 7, 9, 10, 11, 12, 13, 14, 15, 17, 19, 21, 23, 24, 25, 26, 34, 36, 38, 42, 46, 50, 52, 54, 56, 58, 60, 62, 64, 66, 68, 70, 72, 74, 78, 80, 82, 84, 86, 88
CALLE GUILLERMO DE PEREGRINA (CICLISTA)	2, 4, 5, 6, 9
CALLE HERCULES	1, 2, 3, 4, 5, 6, 7, 8, 9, 10, 11, 12, 13, 14, 15, 16, 17, 18, 19, 20, 21, 22, 24, 26
CALLE HERMANOS ARAGON	1, 2, 3, 4, 5, 6, 7, 8
CALLE HIDALGO	1, 2, 3, 4, 5, 6, 7
CALLE HOYA DE LA MORA	1, 2, 3, 4, 7, 9, 10, 11, 13, 16, 18, 20
CALLE HOYA DE SAN JUAN	1, 4
CALLE ILIBERIS	1, 2, 3, 4, 5, 6, 7, 8, 9, 10, 11, 12, 13, 14, 15, 16, 17, 18, 19, 21, 23, 25
CALLE IRIS	1, 2, 3, 4, 5, 6, 7, 8, 9, 11, 13, 15, 17
CALLE ISABEL BARRETO	1, 2, 3, 4, 5, 7, 9, 11, 13, 15, 17, 19, 23, 25
CALLE JARDIN DE DARAJA	1, 2, 3, 4, 5, 6, 7, 8, 9, 10, 11, 12, 13, 14, 15, 16, 17, 19, 20, 22, 24, 26, 28
CALLE JIMENEZ QUILES	1, 2, 3, 4, 5, 6, 7, 9, 11, 14
CALLE JOAQUIN GALERA	2, 6, 8, 10, 14
CALLE JORGE DE TORRES	1, 2, 3
CALLE JOSE LUIS SAENZ DE HEREDIA	0, 1, 2, 3, 4, 5, 6, 7, 8, 9, 10, 11, 12, 13, 14, 15, 16, 17, 18, 19, 20, 21, 22, 23, 24, 25, 26, 27, 28, 29, 30
CALLE JOSE MANUEL JIMENEZ DIEZ (LOLO EL PAYASO)	1, 2, 3, 5, 6, 7, 8, 9, 10, 11, 13, 15, 17, 19, 21
CALLE JOSE MARIA GARRIDO LOPERA	1, 2, 3, 4, 5, 6, 7, 8, 9, 10
CALLE JOSE MILLAN	1, 2
CALLE JOSE TAMAYO	2, 4, 6, 8, 10, 12, 14, 16, 18, 23, 25, 27, 29, 31, 33, 35, 37, 39, 41, 43
CALLE JOVEN MARCELO	1, 2, 3, 5, 7, 8, 9, 10, 11, 12, 13, 14, 15, 17, 19
CALLE JUAN DE ECHEVARRIA	1, 2, 3, 4, 5, 6, 7, 8
CALLE KADIGA	1, 3, 5, 7, 9, 11
CALLE LAGUNA DE AGUAS VERDES	4, 5, 7, 9, 11, 13
CALLE LAGUNA DE LA CALDERA	42, 44
CALLE LAGUNA DE LA MOSCA	1, 2, 3
CALLE LAGUNA DE LAS YEGUAS	1, 2, 3, 4, 5, 6, 7, 8, 9, 10, 11, 12, 13, 14, 15, 16, 18, 20, 22, 24

INFORME DE VIALES DE GRANADA
NOMBRE NORMALIZADO: Granada_I_P_08
NOMBRE ÁREA DE INFLUENCIA: 18087_18_CGTA_8_ZAIDÍN_I_P_08

VIALES DE GRANADA	
Nombre de vía	Rango de portales
CALLE LAGUNA LARGA	1, 2, 3, 4, 5, 6, 8
CALLE LAVADERO DE LA REINA	1, 2, 3, 4, 6, 8, 10, 12, 14, 16, 18, 20, 22, 24
CALLE LICENCIADO VIDRIERA	1, 4, 6, 8
CALLE LOMA DE DILAR	94, 96, 98
CALLE MADRESELVA	1, 2, 3, 4, 5, 6, 7, 8, 9, 10, 11, 12, 13, 14, 15, 16, 17, 18, 19, 20, 21, 22, 23, 24, 25, 26, 27, 28, 29, 30, 31, 32, 33, 34, 36, 38, 40, 42, 44
CALLE MAESE NICOLAS	2, 3, 4, 5, 6, 7, 8, 9, 10, 11, 12, 13, 14
CALLE MAESTRO FAUS	1, 2, 3, 4, 5, 7, 8, 9, 10, 11, 12, 13, 14
CALLE MAESTRO JOSE RODRIGUEZ	1, 2, 4, 6, 8
CALLE MAITENA	1, 2, 3, 5, 6, 7, 8, 9, 10, 11, 12, 13, 14, 15, 16, 17, 18, 19, 20, 21, 22, 23, 24, 26, 28, 30, 32, 34, 36
CALLE MALVARROSA	9, 10, 11, 12, 13, 14, 15, 16, 17, 18, 19, 20, 21, 22, 23, 24
CALLE MANZANILLA DE LA SIERRA	2, 4, 6, 8, 10
CALLE MARIEM	1, 2, 3, 4, 5, 6, 7, 8, 10, 12
CALLE MARTIN PEREZ DE AYALA	1, 2, 3, 4, 6, 8, 10
CALLE MEMORIAL NUÑEZ BLANCA	1, 2, 3, 4, 5, 6, 7, 8, 9, 10, 11, 13, 15
CALLE MERCEDES GAIBROIS	1, 2, 3, 4, 5, 6, 7, 8, 9, 10, 11, 12, 13, 14, 15, 16, 17, 18, 19, 20, 21, 22, 23, 24, 25, 26, 27, 29, 31, 33, 35, 37, 39
CALLE MESON DEL TOLEDANO	1, 2, 3, 4, 5, 6, 7, 8, 9, 11, 13, 15, 17
CALLE MORAYMA	1, 2, 3, 4, 5, 6, 7, 8, 9, 11
CALLE MUSICO JULIO MARABOTTO	1, 2, 3, 5, 7, 9, 11, 13
CALLE OJOS DEL SALADO	0, 5, 6, 7, 8, 9, 10, 11, 12, 13, 14, 15, 16, 17, 18, 19, 20, 21, 22, 23, 24, 25, 26, 27, 28, 29, 30, 31, 32, 33, 34, 35, 36, 37, 38, 39, 40, 41, 42, 43, 44, 45, 46, 47, 48, 49, 50, 51, 52, 63, 65, 67, 69, 100, 101, 102, 103, 104, 105, 106, 107, 108, 109, 110, 111
CALLE ORQUIDEA	1, 2, 3, 4, 5, 6, 10
CALLE PADRE FERRER	1, 2, 4, 6, 20, 22, 24, 26, 28, 30, 32, 34, 35, 36, 38, 40, 50, 52, 60, 62, 64, 66, 68, 70, 72, 74, 76, 78, 80, 82, 84, 86, 88, 90, 92, 94, 96, 98, 100, 102, 104, 106, 108, 110, 112, 114, 116, 118
CALLE PALENCIA	24, 25, 26, 27, 29, 30, 31, 32, 33, 35, 37, 39, 41
CALLE PARAISO	1, 2, 3, 4, 5, 6, 7, 8, 9, 10, 11, 12, 13, 14, 15, 17, 19, 21, 23, 25, 27, 29, 31, 33, 35, 37, 39, 41, 43
CALLE PARTAL	1, 2, 3, 4, 5, 6, 7, 8, 9, 10, 11, 12, 13, 14, 15, 16, 17, 19
CALLE PEDRARIAS	4, 6, 8, 10, 12, 14, 16
CALLE PEÑONES DE SAN FRANCISCO	2, 4, 10, 12, 14, 16
CALLE PERIODISTA MANUEL SANTAELLA PEREZ	1, 2, 3, 5, 8, 10
CALLE PERIODISTA RUIZ CARNERO	1, 2, 3, 4, 5, 6
CALLE PIANISTA PEPITA BUSTAMANTE	1, 2, 4, 6, 8, 10, 12, 14
CALLE PIANISTA ROSA SABATER	1, 2, 3, 4, 5, 6, 7, 8, 9, 10, 11, 14
CALLE PICO DEL CABALLO	52, 54, 56, 58
CALLE PINTOR ISMAEL DE LA SERNA	1, 2, 3, 4, 5, 6, 7, 8, 9, 10, 11, 12
CALLE PINTOR MANUEL ANGELES ORTIZ	1, 2
CALLE PINTOR MANUEL MALDONADO	1, 3, 5, 7, 9, 11, 23, 25, 27
CALLE PLATERO	1, 2
CALLE POETA CESAR VALLEJO	1, 3, 5, 6, 7, 9, 10, 11
CALLE POETA EDUARDO CARRANZA	1, 2, 3, 4
CALLE POETA MANUEL GONGORA	1, 2, 3, 4, 5, 6, 8, 9, 10, 11, 12, 13, 14, 15, 17, 19
CALLE POETA MIRA DE AMEZCUA	1, 2, 3, 4, 5, 6, 7
CALLE POETA ZORRILLA	1, 2, 3, 4, 5, 6
CALLE POQUEIRA	1, 2, 4, 6
CALLE PRADOLLANO	1, 3, 4, 5, 6, 7, 8, 9, 10, 11, 12, 13, 14, 15, 16, 17, 18, 19, 20, 22, 24, 26
CALLE PRIMAVERA	1, 2, 3, 4, 5, 6, 7, 8, 9, 10, 11, 12, 13, 15, 17, 18, 19, 20, 21, 22, 23, 24, 25, 26, 27
CALLE PROFESOR ALBAREDA	1, 2, 3, 4, 6, 8, 10, 12, 14, 16, 18
CALLE PROFESOR MANUEL GARZON PAREJA	7, 9, 11, 13, 15, 20, 21, 23, 25, 32, 34, 36, 38

INFORME DE VIALES DE GRANADA
NOMBRE NORMALIZADO: Granada_I_P_08
NOMBRE ÁREA DE INFLUENCIA: 18087_18_CGTA_8_ZAIDÍN_I_P_08

VIALES DE GRANADA	
Nombre de vía	Rango de portales
CALLE PROFESOR TIERNO GALVAN	1, 2, 3, 4, 5, 6, 7, 9
CALLE PUENTE VERDE	1, 2, 3, 4, 5, 6
CALLE PURCHE	1, 2, 3, 5, 6, 7, 8, 9, 10, 11, 12, 20
CALLE RAMON GUARDIOLA	1, 3
CALLE RECTOR ELOY SEÑAN	8, 26, 28, 30, 32, 34, 36, 38, 40, 42, 44, 46, 48, 50
CALLE REINA MORA	1, 2, 3, 4, 5, 6
CALLE REY ABU SAID	1, 2, 3, 4, 5, 6, 7, 8, 9, 10, 11, 13, 15, 17, 19
CALLE RIBERA DEL VIOLON	1, 2, 3, 4, 5, 6, 7, 8, 9, 10, 11, 12
CALLE RIO	1, 2, 3, 4, 5, 6, 7, 8, 9, 10, 11, 12, 13, 14, 15, 16, 17, 18, 19
CALLE RIO BERMEJO	1, 2, 3, 5, 6, 8
CALLE RIO CACIN	2, 4
CALLE RIO COLOMERA	1, 2, 3, 4
CALLE RIO CUBILLAS	1, 2
CALLE RIO DAURO	1, 2, 3, 4, 6
CALLE RIO FARDES	1, 2
CALLE RIO GUADALFEO	1, 2, 3, 4, 6
CALLE RIO LECRIN	1, 2, 3, 4, 5, 6, 8
CALLE RIO MONACHIL	1, 2, 4
CALLE RIO ZUJAR	1, 2, 4, 6, 7, 8, 10
CALLE RUMAIKIYA	2, 3, 4, 5, 6, 7, 8, 9, 10, 11, 12, 13, 14, 15, 16, 17, 18, 19, 20, 21, 22, 23, 24, 25, 27, 29, 31
CALLE SAN ANTON VIEJO	1, 2, 3, 4, 5, 6, 7, 8, 9, 10, 11, 12, 13, 14, 15, 16, 17, 19, 21, 23, 25, 27, 29, 31, 33, 35, 37, 39, 41, 43, 45
CALLE SAN CARLOS	1, 2, 3, 4, 5, 6
CALLE SAN PATRICIO	1, 2, 3, 4, 5, 6, 8, 10, 12
CALLE SAN VICENTE DE PAUL	2, 4, 6, 8, 10, 12, 14, 16, 18, 20
CALLE SANCHICA	1, 2, 3, 5
CALLE SANCHO PANZA	1, 2, 3, 4, 5, 6, 7, 8, 9, 10, 11, 12, 13, 14, 15, 16, 17, 18
CALLE SANTA LUISA DE MARILLAC	1, 2, 3, 4, 5, 6, 7, 8, 9, 10, 11, 12, 13, 14, 15, 16, 17, 18, 19, 20, 22, 24, 26, 28, 30, 32, 34, 36, 38, 40, 42
CALLE SANTA MARGARITA	1, 2, 3, 4, 5, 6, 7, 8, 9, 10, 13
CALLE SANTO SEPULCRO DE LA QUINTA	1, 5, 6, 7, 8, 9, 11, 13, 15, 17, 19, 21, 23, 25, 27, 29, 31, 33, 35, 37, 39, 41, 43, 45
CALLE SIETE LAGUNAS	1, 2, 3, 4, 5
CALLE SOS DEL REY CATOLICO	1, 3, 5, 7, 8, 9, 10, 11, 12, 13, 14, 16
CALLE SULTANA	1, 2, 3, 4, 6, 7, 8, 9, 10, 12, 14, 16, 18, 20, 22, 24
CALLE TAMBORIL	80, 82
CALLE TERESA DE CARTAGENA	8, 9, 10, 11, 12, 14
CALLE TIRSO DE MOLINA	1, 2, 4
CALLE TORRE DE ALQUIZA	1, 2, 3, 4, 6, 7, 8, 9, 10, 11, 12, 13, 14, 16, 18, 20, 22, 24
CALLE TORRE DE COMARES	1, 2, 3, 4, 5, 7, 9
CALLE TORRE DE LA BARBA	2, 4, 6, 8, 10, 12, 14, 16, 18, 20, 22, 24, 26, 28, 30, 32, 34, 36
CALLE TORRE DE LA BRUJA	1, 2, 3, 4, 8
CALLE TORRE DE LA CAUTIVA	1, 2, 3, 4, 5, 7, 9, 11, 13, 15
CALLE TORRE DE LA POLVORA	1, 2, 3, 4, 6, 8, 10, 12, 14, 16, 18, 20, 22, 55, 61, 63, 65, 67, 69, 71, 73, 75, 77
CALLE TORRE DE LA VELA	1, 2, 4, 5, 6, 8, 10, 12
CALLE TORRE DE LAS CABEZAS	1, 2, 3, 4, 8, 10, 12, 14, 16, 18, 20, 22, 24
CALLE TORRE DE LAS DAMAS	1, 2
CALLE TORRE DE LAS ROCAS	1, 2, 3, 4, 5, 7, 8, 10, 12, 14, 16, 18, 20, 22, 24, 26, 28, 30, 32
CALLE TORRE DE LOS ABENCERRAJES	1, 2, 4, 6, 7, 8, 9, 10, 12, 14, 16
CALLE TORRE DE LOS CARROS	2, 4, 6, 8, 10, 12, 14, 16, 18
CALLE TORRE DE LOS HIDALGOS	1, 2, 3, 4, 5, 6, 7, 8, 9, 11

INFORME DE VIALES DE GRANADA
NOMBRE NORMALIZADO: Granada_I_P_08
NOMBRE ÁREA DE INFLUENCIA: 18087_18_CGTA_8_ZAIDÍN_I_P_08

VIALES DE GRANADA	
Nombre de vía	Rango de portales
CALLE TORRE DE LOS PICOS	1, 2, 3, 4, 5, 6, 7, 9, 11, 13, 15, 17, 28
CALLE TORRE DE LOS SIETE SUELOS	1, 2, 3, 5, 6, 7, 9
CALLE TORRE DE MACHUCA	0, 2, 4
CALLE TORRE DE PERALADA	1, 2, 3, 4, 5, 6, 8, 10
CALLE TORRE DEL ADARGUERO	1, 2, 3, 4, 5, 7, 9, 11, 13, 15, 17, 19, 21
CALLE TORRE DEL CAPITAN	1, 2, 3, 4, 5, 6, 7, 10, 12, 14
CALLE TORRE JUAN DE ARCE	1, 2, 4
CALLE TORRE PEDRO DE MORALES	1, 2, 3, 4, 6, 8, 10
CALLE TORRE QUEBRADA	1, 2, 3, 4, 6, 8, 10, 12
CALLE TORRES MOLINA	1, 2, 3, 4, 5, 6, 7, 8, 9, 10, 11, 13, 14, 15, 16, 17, 18, 19, 20, 21, 22, 23, 25, 27, 29, 31, 33, 35, 37, 39, 41, 43
CALLE TREVENQUE	1, 2, 3, 4, 5, 6, 7, 8, 9, 10, 11, 13, 14, 15, 16, 17, 18, 19, 20, 21, 22, 23, 24, 26
CALLE VADILLO	1, 3, 88, 90, 92
CALLE VALL DEL OMAR	1, 2, 3, 4, 6, 8, 10, 14
CALLE VALLE DE LECRIN	1, 3, 4, 5, 6, 7, 8, 9, 10, 11, 12, 13, 14, 15, 16, 17, 18, 19, 21, 23
CALLE VALLE DE RIOFRIO	2, 4, 6, 7, 8, 9, 10, 11, 12, 13, 14, 16
CALLE VALLE DEL ZALABI	2, 8, 10, 14, 18, 30, 32, 34, 36, 38, 40, 42, 44, 46, 48, 50, 52, 54, 56
CALLE VIOLETAS	1, 2, 3, 4, 5, 6, 7, 8, 9, 10, 11, 12, 13, 14, 15, 16, 17, 18, 19, 20, 21, 22, 23, 24, 25, 26, 27, 28, 29, 30, 31, 32, 33, 34
CALLE VIRGEN DE LA ESPERANZA	1, 2
CALLE VIRGEN DE LORETO	1, 2, 3, 4, 5, 6, 7, 8, 9, 10, 11, 12, 13, 14, 15, 16, 18, 20, 22, 24, 26, 28, 30, 32, 34
CALLE VIRGEN DE MONTSERRAT	1, 2, 3, 4, 5, 6, 8, 10, 12
CALLE VIRGEN DEL MAYOR DOLOR	1, 2, 4, 6
CALLE VIRGEN DEL ROCIO	1, 2, 3, 4, 5, 6, 7, 8, 9, 10, 11
CALLE YERMA	1, 2, 3, 4, 5, 6, 7, 8, 9, 10, 11, 13, 15, 16, 17, 19, 20, 22, 24, 25
CALLE ZENOBIA CAMPRUBI	1, 2, 4, 6
CALLE ZORAHADA	1, 2, 4, 6, 8, 10, 12
CALLE ZORAYA	1, 2, 3, 4, 5, 6, 7, 8, 9, 10, 11, 12, 13, 14, 16, 18, 20, 22, 24, 26, 28, 30, 32, 34
CALLEJON ANGEL	1, 2, 3, 4, 5, 6, 7, 8, 9, 10, 11, 12, 14, 16, 17, 19, 21, 22, 23, 24, 25, 26, 28, 29, 31, 33, 35, 37, 39
CALLEJON PRETORIO	1, 2, 3, 4, 5, 7, 9, 11, 13
CAMINO ABENCERRAJES	1, 2, 3, 4, 5, 6, 7, 8, 9, 11, 13, 15, 17, 19, 21, 23, 25, 29, 31, 33, 35, 37, 44, 46, 48, 50, 56, 79, 81, 83, 85, 87, 89, 91, 93, 95, 105, 107, 109, 111, 113, 131, 133, 134, 136, 137, 138, 140, 151
CAMINO BAJO DE HUETOR	1, 2, 3, 4, 5, 6, 7, 9, 10, 11, 12, 13, 14, 15, 16, 17, 18, 19, 20, 22, 24, 26, 28, 29, 31, 32, 33, 34, 35, 36, 37, 38, 40, 41, 42, 44, 45, 46, 49, 50, 51, 52, 53, 54, 55, 57, 58, 59, 60, 61, 62, 63, 71, 73, 75, 77, 78, 79, 80, 81, 82, 83, 84, 85, 86, 87, 88, 90, 92, 94, 96, 98, 100, 102, 124, 126, 128, 130, 132, 136, 138, 140, 142, 144, 146, 148, 150, 152
CAMINO CAICENA	1, 3, 5, 7, 9, 15, 17, 19, 21, 23, 25, 27, 29, 31, 33, 35, 37, 39, 41, 43, 45, 47, 49, 51, 53, 55, 57
CAMINO CONEJERAS	4, 10, 12, 14, 16, 18, 20, 22, 24, 26, 28, 30, 32, 34, 36, 38, 40, 42, 44, 46, 48, 50, 52, 54, 56, 58
CAMINO PEÑUELAS	1, 2, 3, 4, 5, 6, 7, 8, 9, 10, 11, 12, 13, 14, 15, 16, 17, 25
CAMINO REAL DE LOS NEVEROS	1, 2, 3, 4, 5, 6, 7, 9, 10, 11, 12, 13, 14, 15, 16, 18, 19, 20, 22, 23, 24, 25, 26, 27, 28, 30, 32, 34, 36, 38, 48, 50, 82, 84, 86, 88, 90, 92, 94, 96, 98, 99, 100, 101, 102, 103, 104, 105, 106, 107, 108, 109, 110, 114, 115, 116, 117, 118, 119, 120, 121, 123, 129, 131, 133, 135, 137, 139, 141, 143, 145, 147, 149
CAMINO RONDA	2, 4, 6, 22, 28
CAMINO ZUBIA	1, 2, 3, 4, 5, 6, 7, 8, 9, 10, 11, 12, 13, 14, 15, 16, 18, 19, 20, 21, 22, 23, 24, 25, 26, 27, 28, 30, 32, 34, 36, 38, 40
CARRETERA A-4028	1, 25
CARRETERA GR-3202	20, 22, 24, 26, 28, 30, 36, 38, 40, 42, 44, 46, 56, 60, 62, 70, 108, 130, 132, 150

INFORME DE VIALES DE GRANADA
NOMBRE NORMALIZADO: Granada_I_P_08
NOMBRE ÁREA DE INFLUENCIA: 18087_18_CGTA_8_ZAIDÍN_I_P_08

VIALES DE GRANADA	
Nombre de vía	Rango de portales
CARRETERA SIERRA	16, 18, 20, 22, 24, 26, 28, 30, 32, 34, 36, 38, 40, 44, 46, 48, 50, 52, 54, 60, 64, 68, 70, 74, 76, 78, 80, 84, 86, 88, 94, 100, 112, 114, 130, 132
CARRETERA SIERRA (LANCHA)	0, 134, 136, 138, 140, 142, 144, 146, 148, 150, 152, 154, 156, 158, 160, 162, 164, 168, 172, 178, 180
CARRETERA ZUBIA	69, 78, 80, 82, 84, 86, 92, 94
COLONIA CERVANTES	2, 3, 4, 6, 7, 8, 9, 10, 11, 12, 13, 14, 15, 16, 18, 20, 22, 24, 26, 28, 30, 32, 34, 36, 38
COLONIA SAN CONRADO	4, 5, 6, 7, 8, 9, 10, 11, 12, 13, 14, 15, 17, 18, 19, 20, 22, 23, 24, 25, 26, 27, 28, 29, 30, 31, 32, 33, 34, 35, 36, 37, 38, 39, 40, 41, 42
CUESTA ALCAZABA	1, 2, 3, 4, 5, 6, 7
CUESTA PLATA	1, 2, 3, 4, 5, 6, 7, 8, 10, 11, 12, 13, 14, 15, 16, 17, 18, 19, 20, 21, 22, 23, 24, 25, 26, 27, 28, 29, 30, 31, 32, 33, 34, 35, 36, 37, 38, 41, 43, 45, 47, 49, 51, 53, 55, 57, 59, 61, 63
CUESTA TREVENQUE	1, 2, 3, 4, 5, 6
CUESTA VACARES	1, 2, 3, 4, 5, 6, 7
GLORIETA ASTRONOMIA	1, 2, 3, 4
PASAJE AUREOLA	1, 2, 3, 4
PASAJE FLOR	1, 2, 3, 4
PASAJE HIPICA	1, 2, 3, 4, 5, 6, 7, 8, 9, 10, 11
PASAJE LIRIOS	1, 2, 3, 5, 7, 8, 9, 10, 11
PASAJE NARDOS	1, 2, 3, 4, 5, 6
PASAJE QUINTA ALEGRE	1, 2, 3, 5
PASEO BASILIOS	0, 1, 2, 3, 5, 6, 7, 8, 9, 10, 11, 12, 13
PASEO BOMBA	0
PASEO EMPERADOR CARLOS V	1, 2, 3, 4, 5, 6, 7, 8, 9, 10, 11, 12, 13, 15, 16, 17, 18, 19
PASEO EUROPA	1, 2, 3, 8
PASEO FUENTE DE LA BICHA	2, 4, 6, 8, 10, 12, 14, 16, 30, 50, 51, 52, 53, 54, 55, 62, 110
PASEO HERMANOS COSTALEROS	1, 3
PASEO LAGUNA DE CAMEROS	1, 3, 6, 10, 12, 14, 16, 18, 20, 22, 24, 26, 28, 30, 32, 34, 36, 38, 40
PASEO SALON	0
PASEO VIOLON	0, 2, 3, 4, 5, 6, 7, 8, 9, 10, 11, 12, 13, 14, 15, 16, 17, 18, 19, 20, 21, 22, 25, 29
PLACETA ATALAYA	60, 62, 64
PLACETA INMACULADA NIÑA	1, 2, 3, 4
PLACETA OBRERO CASTRO LOPEZ	1, 2, 3, 4, 5, 6
PLACETA RIO BERMEJALES	1, 2, 3, 4
PLAZA ALCAZABA DE MIRASIERRA	1, 2
PLAZA ANGEL	1, 2, 3
PLAZA ARCANGEL SAN MIGUEL	1
PLAZA BARON PIERRE DE COUBERTIN	1
PLAZA CLARA CAMPOAMOR	1, 2, 3, 4, 5, 6, 7, 8, 9, 10, 11, 12, 13, 14, 15, 16, 17, 18, 19, 20, 21, 22, 23, 24, 25, 26, 27, 28, 29, 30, 31, 32, 33, 34, 36, 37, 38, 39, 40, 41, 42, 43, 44, 45, 46, 47, 48, 49
PLAZA DON PEDRO MANJON	1, 2, 3, 4, 5, 6
PLAZA DUQUE DE SAN PEDRO GALATINO	8, 9
PLAZA ESCULTOR FRANCISCO LOPEZ BURGOS	1
PLAZA FONTIVEROS	1, 2, 3, 4, 5
PLAZA GERTRUDIS GOMEZ DE AVELLANEDA	1, 2, 3, 4, 5, 6, 7, 8, 9, 10, 11, 12, 13, 14, 15, 16, 17, 18, 19, 20, 21, 22, 23, 24, 25, 26, 27, 28, 29, 30, 31, 32, 33, 34, 35, 36, 37, 38, 39, 40, 41, 42, 43, 44, 45, 46, 47, 48, 49, 50, 51, 52, 53, 54, 55, 56, 57, 58, 59
PLAZA HIPICA	1, 2, 3
PLAZA LUISA SIGEA DE VELASCO	1, 2, 3, 4, 5, 6, 7, 8, 9, 10, 11, 12, 13, 14, 15, 16, 17
PLAZA MIRADOR	1, 2
PLAZA MORO	1, 2, 3, 4, 5, 6, 7
PLAZA NEVEROS	1, 2, 3, 4, 5

INFORME DE VIALES DE GRANADA

NOMBRE NORMALIZADO: Granada_I_P_08

NOMBRE ÁREA DE INFLUENCIA: 18087_18_CGTA_8_ZAIDÍN_I_P_08

VIALES DE GRANADA	
Nombre de vía	Rango de portales
PLAZA PICON DE JEREZ	1, 2, 3
PLAZA PUNTAL DE VACARES	1, 2, 3, 4, 5, 6, 7, 8, 9, 10, 11, 12, 13, 14, 15, 16, 17, 18, 19, 20, 21, 22, 23
PLAZA RIO BEIRO	1, 2, 4, 5
PLAZA TORRE DE BALTASAR DE LA CRUZ	1

INFORME DE VIALES DE GRANADA

NOMBRE NORMALIZADO: Granada_I_P_08

NOMBRE ÁREA DE INFLUENCIA: 18087_18_CGTA_8_ZAIDÍN_I_P_08

Áreas limítrofes:

Área de influencia limítrofe	Centros del área limítrofe
18087_15_CGTA_4_CENTRO_I_P_05	18002875 - C.D.P. La Inmaculada Calle Carril del Picón, 5 18002930 - C.D.P. La Presentación de Nuestra Señora Calle Gran Capitán, 14 18002966 - C.D.P. La Asunción Calle Martínez de la Rosa, 5 18002978 - C.D.P. Nazaret Calle Obispo Hurtado, 6 18003405 - C.D.P. Virgen de las Angustias Calle Carrera del Genil, 42 18003703 - C.E.I.P. Profesor Tierno Galván Calle Agustina de Aragón, 2 18003880 - C.E.I.P. Inmaculada del Triunfo Avenida Capitán Moreno, 7 18004094 - C.D.P. Virgen de Gracia Calle Músico Vicente Zarzo, s/n 18010057 - C.E.I.P. San José Calle Las Tablas, 13 18601035 - C.E.I.P. Genil Plaza General Emilio Herrera, 4
18087_17_CGTA_6_REALEJO_I_P_07	18002991 - C.D.P. Nuestra Señora de las Mercedes Plaza Padre Suárez, 4 18003132 - C.D.P. Santo Domingo Calle Vistillas, 2 18003478 - C.D.P. Ave María-Vistillas Calle Molinos, 63 18003739 - C.D.P. Nuestra Señora del Rosario Calle Santiago, 36 18003764 - C.E.I.P. José Hurtado Calle Molinos, 55 18004574 - C.E.I.P. Virgen de Fátima Calle Alisos, s/n 18601503 - C.C. Duende Paseo de las Palmas, 13
18087_19_CGTA_7_GENIL_I_P_09	18002917 - C.D.P. Santa Marta Calle Concha Espina, 20 18003016 - C.D.P. El Carmelo Calle Francisco Palau y Quer, 19 18003545 - C.E.I.P. Reyes Católicos

INFORME DE VIALES DE GRANADA

NOMBRE NORMALIZADO: Granada_I_P_08

NOMBRE ÁREA DE INFLUENCIA: 18087_18_CGTA_8_ZAIDÍN_I_P_08

Área de influencia limítrofe	Centros del área limítrofe
	Plaza Velázquez, 31
	18003612 - C.D.P. San Juan Bosco
	Calle Almuñécar, 9
	18003727 - C.E.I.P. Jardín de la Reina
	Avenida Mediterráneo, 5
	18003740 - C.E.I.P. Gallego Burín
	Avenida Dílar. Bda. Zaidín
	18003791 - C.D.P. Juan XXIII-Zaidín
	Camino de Santa Juliana, 5
	18009456 - C.E.I.P. Vicente Aleixandre
	Calle Beethoven, 6
	18009547 - E.I. Generalife
	Calle Margarita Xirgu, 4