



UNIÓN EUROPEA  
Fondo Europeo Agrícola de Desarrollo Rural



JUNTA DE ANDALUCÍA  
CONSEJERÍA DE AGRICULTURA, GANADERÍA,  
PESCA Y DESARROLLO SOSTENIBLE

# Geosites in Sierras Subbéticas Geopark



biodiversidad  
de Andalucía



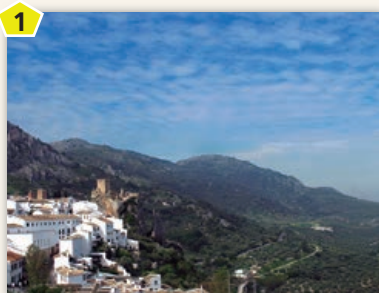
PARQUE NATURAL  
Sierras  
Subbéticas



United Nations  
Educational, Scientific and  
Cultural Organization



Sierras Subbéticas  
UNESCO  
Global Geoparks



## 1 Subbética Thrust Front

Where the Betic Cordillera "rides" over the Guadalquivir Basin.



## 2 Murciélagos Cave in Zuheros

An underground Natural Monument. The largest cave in the province of Córdoba.



## 3 Bailón River Canyon

A gorge cutting through the Cabra massif.



## 4 Arrebola Paleodoline

A large hole 150 million years old.



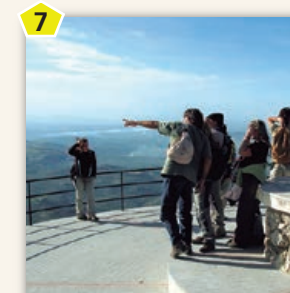
## 5 Nava de Cabra Polje

A large plain bordered by mountains at the heart of the karstic massif. Where the Bailón River begins and the trail takes us until the beautiful village of Zuheros.



## 6 The Picacho de Cabra tectonic island

The relict of a large buckled strata.



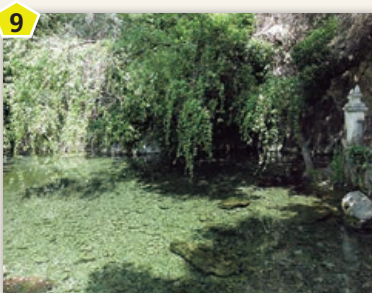
## 7 Picacho de Cabra

The Balcony of Andalusia. A unique lookout where geology, history, religion and tradition meet. Natural Site of National Interest since 1929.



## 8 Los Lanchares Lapiaz

A "lunar landscape" shaped by rain.



## 9 Birth of the Cabra River

A beautiful landscape of fountains and vegetation where the Cabra River begins.



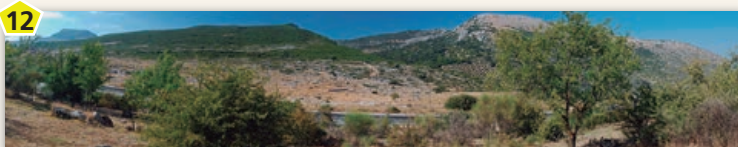
## 10 Los Frailes Fountain

"Roman" quarries in Jurassic limestone from the Tethys Sea.



## 11 Los Pelaos Fold

When the rock becomes malleable.



## 12 Santa Rita Panoramic

The Chocladero Graben, a stream flanked by large normal faults.



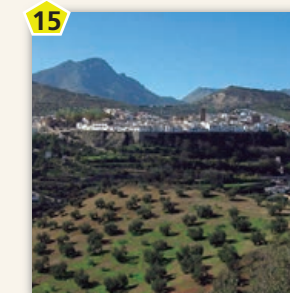
## 13 Los Pelaos Paleokarst

A Jurassic karst, developed when the Cabra massif was an island.



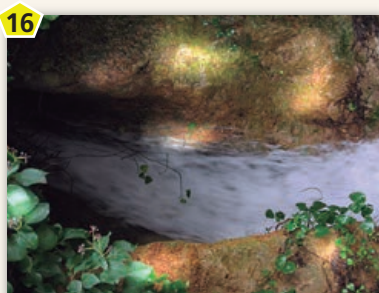
## 14 Zagrilla Alta Spring

A natural spring historically used as laundry.



## 15 Adarve Balcony

A bulwark generated by water over thousands of years. Settlement of Priego de Córdoba.



## 16 The Milana goblin

A mysterious and unpredictable spring.



## 17 Rey Fountain

The most monumental fountain in the Subbética, with 139 spouts, fed by the Salud spring.



## 18 Los Jarales Radiolarites

A geobotanic island in the south of Córdoba.



## 19 Periglacial remains

Relicts of the Ice Age in the Subbética.



## 20 La Tiñosa

The ceiling of the province of Córdoba, at the heart of the Sierra de la Horconera.



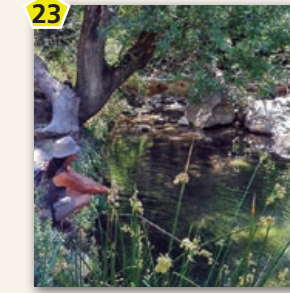
## 21 Pinar de Rute dolines

Karstic dolines in a pine forest.



## 22 Rute Lanchar

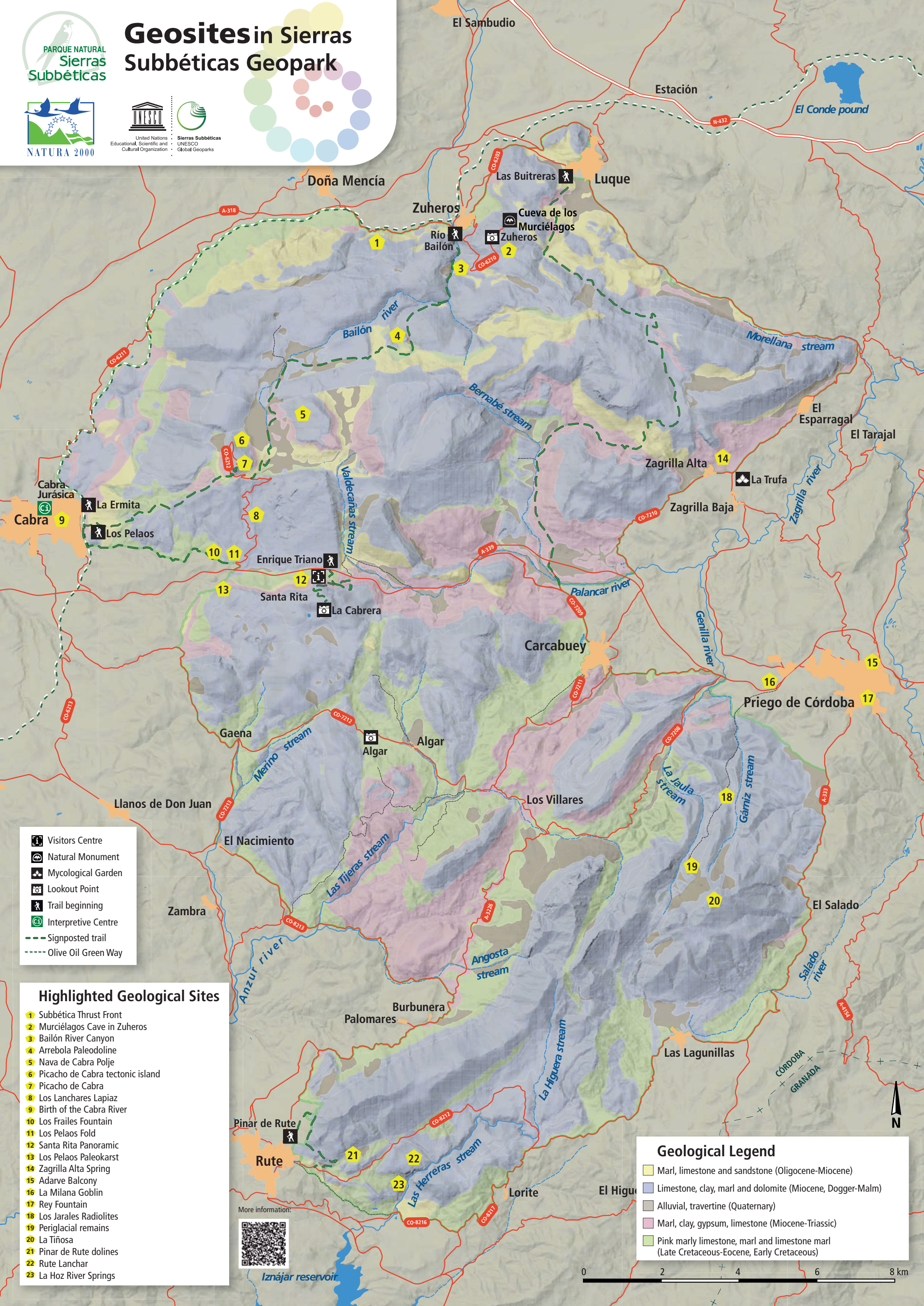
A karstic landscape at the south of the Geopark.



## 23 La Hoz River Springs

The strongest flowing springs in Sierras Subbéticas located in a spectacular geological framework.





- Visitors Centre
- Natural Monument
- Mycological Garden
- Lookout Point
- Trail beginning
- Interpretive Centre
- Signposted trail
- Olive Oil Green Way

### Highlighted Geological Sites

- 1 Subbética Thrust Front
- 2 Murciélagos Cave in Zuheros
- 3 Bailón River Canyon
- 4 Arrebola Paleodoline
- 5 Nava de Cabra Polje
- 6 Picacho de Cabra tectonic island
- 7 Picacho de Cabra
- 8 Los Lanchares Lapiaz
- 9 Birth of the Cabra River
- 10 Los Frailes Fountain
- 11 Los Pelaos Fold
- 12 Santa Rita Panoramic
- 13 Los Pelaos Paleokarst
- 14 Zagrilla Alta Spring
- 15 Adarve Balcony
- 16 La Milana Goblin
- 17 Rey Fountain
- 18 Los Jarales Radiolites
- 19 Periglacial remains
- 20 La Tiñosa
- 21 Pinar de Rute dolines
- 22 Rute Lanchar
- 23 La Hoz River Springs

More information:



### Geological Legend

- Marl, limestone and sandstone (Oligocene-Miocene)
- Limestone, clay, marl and dolomite (Miocene, Dogger-Malm)
- Alluvial, travertine (Quaternary)
- Marl, clay, gypsum, limestone (Miocene-Triassic)
- Pink marly limestone, marl and limestone marl (Late Cretaceous-Eocene, Early Cretaceous)

