

Pilot experiences: Draft of Action Plan Regional Ministry of Agriculture, Fisheries and Environment (Andalusia)

*Enerscapes Meeting
13th and 14th of november 2012
Roma, Italia*

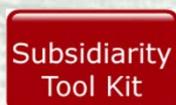
Action plan. Guiding Principles.



Governance: a new style of government



Sustainable development: three dimensions of sustainability: environmental, social and economy.



Subsidiarity: decisions should be taken as close as possible to the citizens.



Prevention and precaution: a proactive approach that does not wait until the problem appears.



Ecological integrity: the most comprehensive and inclusive concept that informs about the ecosystems' conservation.

ADMINISTRATIVE COORDINATION

PLANNING

AUTHORITATIVE PROCEDURES

MEASURES

INCENTIVE PROGRAMME

1. Actions connected with legislative frame

Forum for the
Interadministrative
coordination

Extension of *"Special Plan at supramunicipal level on infrastructure planning of wind resources in the region of "La Janda" (Cadiz)."* to the other three municipalities that comprise the pilot area

Renewal of operating
licenses

Promoting landscape
recovery and
improvement of the
natural and cultural
landscape

Promotion of solar PV
installation in business
and industry parks

Promotion of energy
efficiency and use of
renewable energy
criteria in the
agriculture sector.

Promotion the
installation of
photovoltaic solar
energy in remote
areas

Incentives for the
relocation of high
landscape impact
wind turbines

Incentives to
rearranged and
improved efficiency of
the existing power
grid and other
services infrastructure
for wind farms.

Forum for the
coordination between
local territorial
instruments

Promoting landscape
chart

AS

SW

W

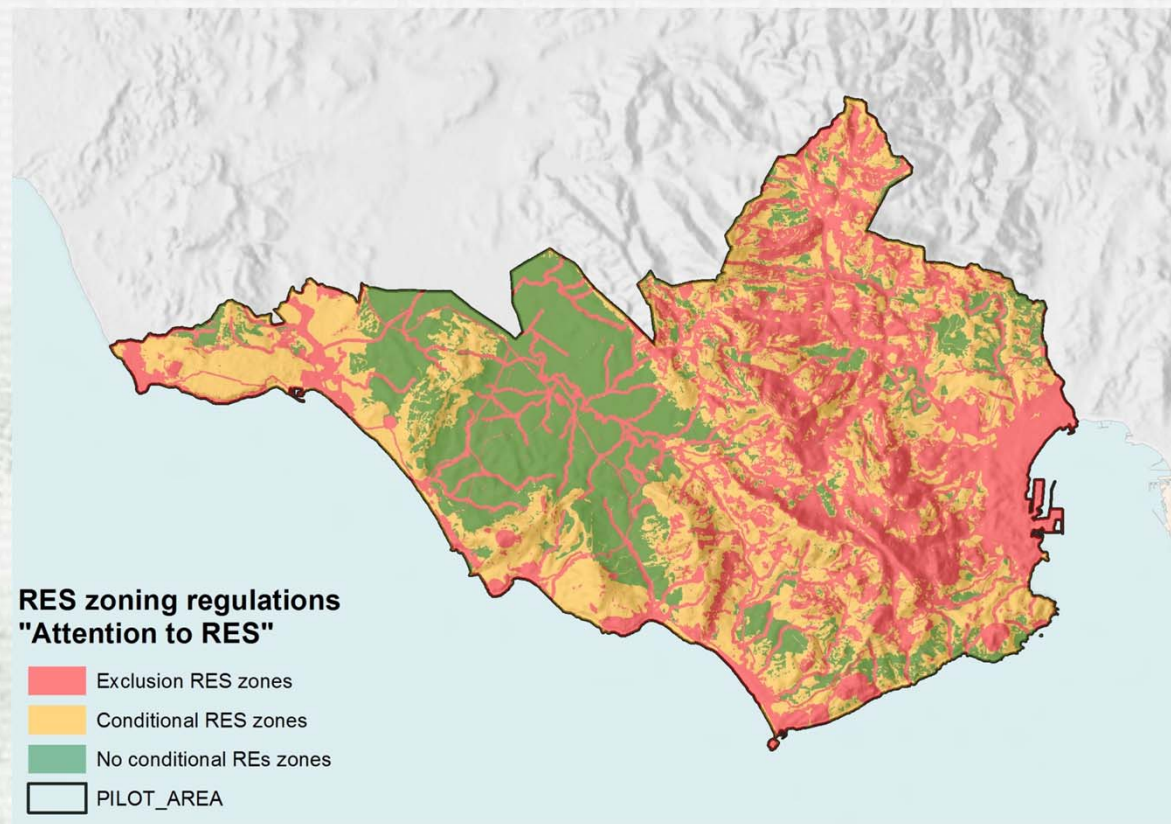


Rediam...

1. Actions connected with legislative frame

Extension of “*Special Plan at supramunicipal level on infrastructure planning of wind resources in the region of “La Janda” (Cadiz). ”* to other three municipalities that comprise the pilot area

RES Zoning regulation





Actions connected with legislative frame

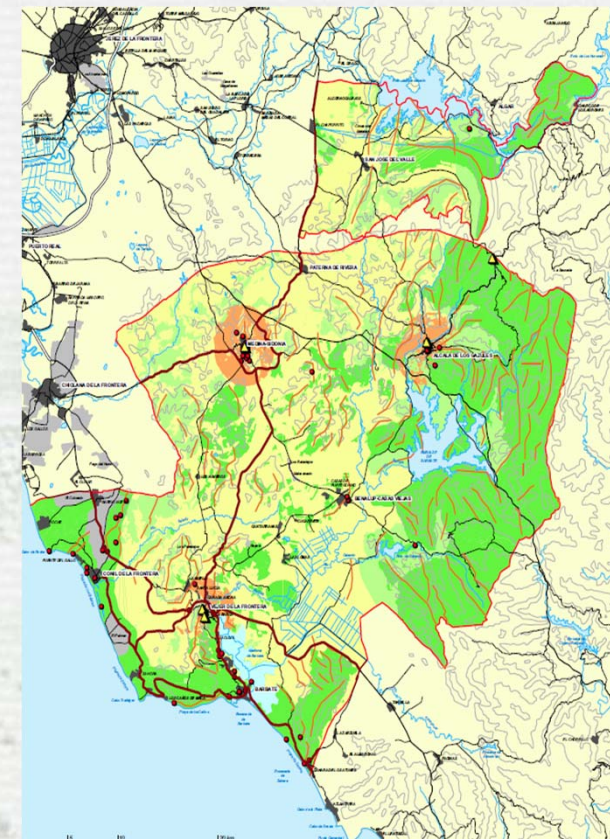
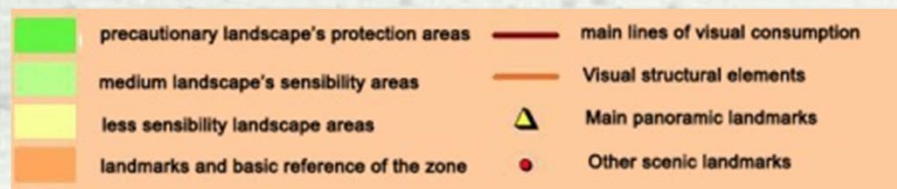
2. Programming Sectorial Schemes:

“continuous and consistent parts of the territory with energy potential it's equal or superior of 50MW, and with common evacuation infrastructures”, through:

- Definition of the sectors
- Study at detail scale the landscape impact.
- Definition of the needed constructive conditions for a better landscape integration of RES facilities.

An example of a Plan of landscapes' limitations

“Special Plan at supramunicipal level on infrastructure planning of wind resources in the region of “La Janda” (Cadiz).”

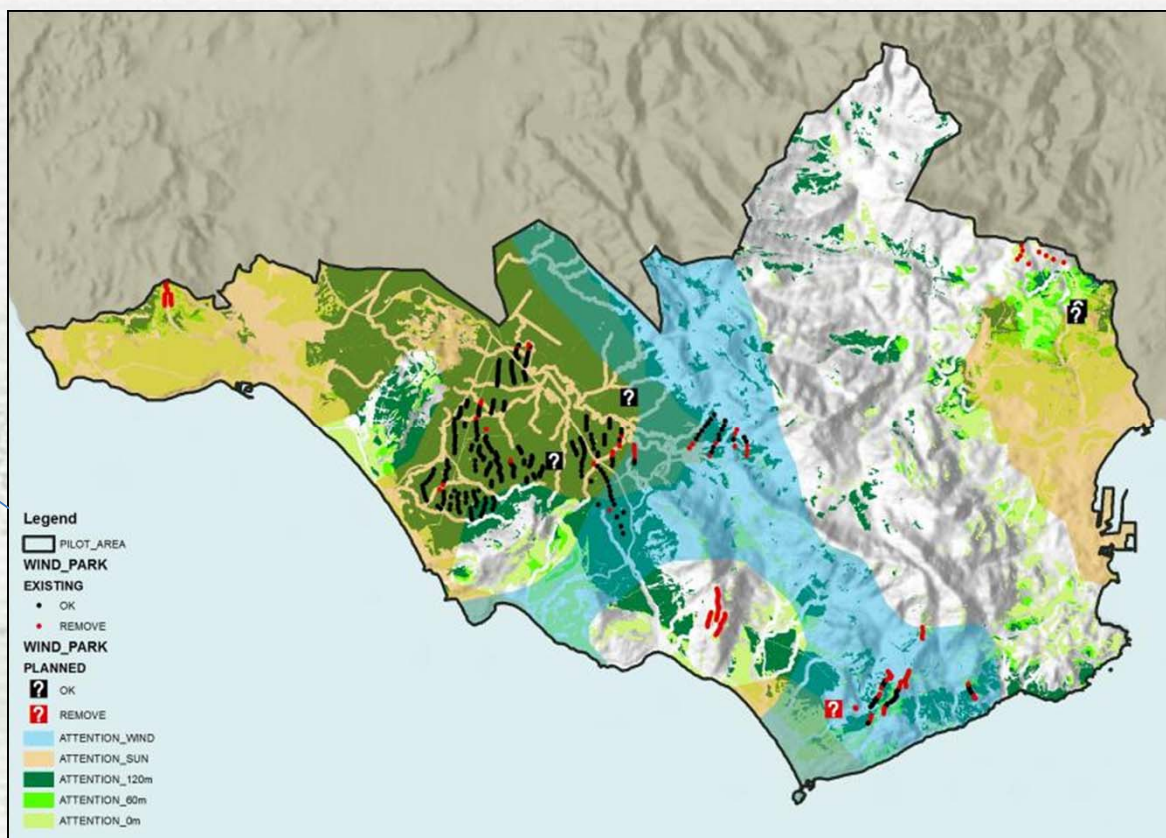




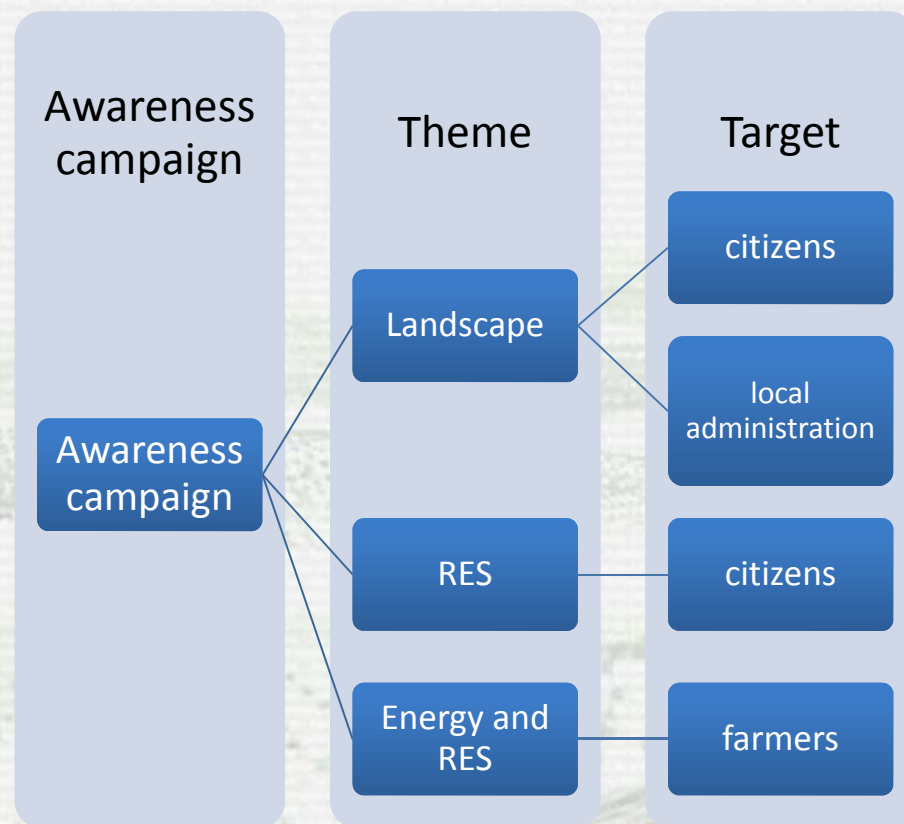
Actions connected with legislative frame

Relocation of high landscape impact wind turbines:

- 3. Incentives plan to relocation
- 4. No Renewal of operating licenses



2. Actions connected with communication: information & awareness campaign



AS

SW

AW

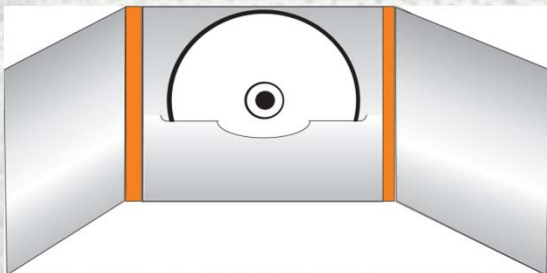


Rediam...

2. Actions connected with communication: information & awareness campaign



Making a CD book for dissemination of enerscapes project and the visual impact tool that we have developed



AS

SW

W



Rediam

3. Actions to associate the citizens in local decisions regarding RES or landscape.

Promote a monitoring Commission for the energy resources management of the “Estrecho de Gibraltar”

Creation of a non-binding advisory body whose membership will be on voluntary basis to be heard in relation to new projects of renewable energy facilities and consisting of interested stakeholders in territorial management.



AS

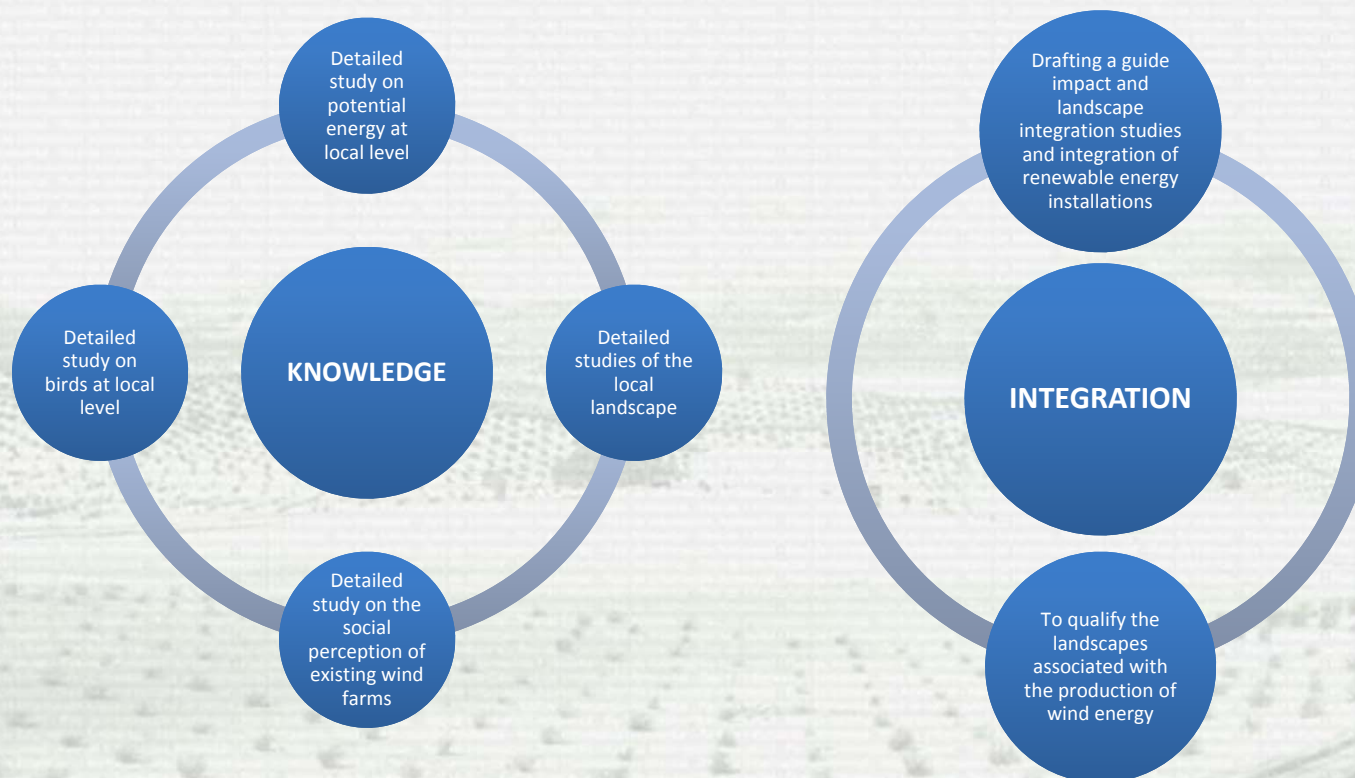
SW

AW



Rediam

4. Technical actions



AS

SW

AW

LIFE 2014-2020
Investing in the future of Europe

Rediam

4. Technical actions

