



Hipparchia alcyone
© José Miguel Barea Azcón



Argynnis pandora
© Juan Carlos Poveda



Pararge aegeria
© José Miguel Barea Azcón



Melanargia lachesis
© Javier Olivares



Melanargia occitanica
© Javier Olivares



Satyrus actaea
© José Miguel Barea Azcón



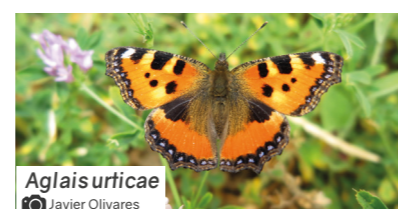
Coenonympha dorus
© José Miguel Barea Azcón



Vanessa cardui
© José Miguel Barea Azcón



Euphydryas aurinia
© José Miguel Barea Azcón



Aglais urticae
© Javier Olivares



Hipparchia statilinus
© Javier Olivares



Lasiommata megera
© Javier Olivares



Melanargia ines
© Juan Carlos Poveda



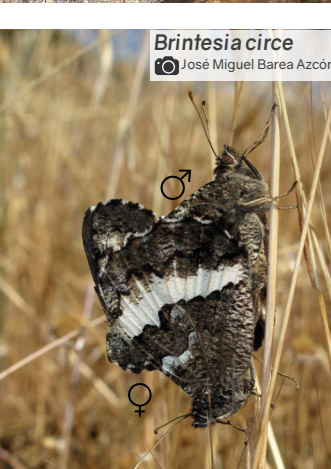
Nymphalis polychloros
© José Miguel Barea Azcón



Vanessa atalanta
© José Miguel Barea Azcón



Issoria lathonia
© José Miguel Barea Azcón



Brintesia circe
© José Miguel Barea Azcón



Erabis hispania
© José Miguel Barea Azcón



Hipparchia semele
© José Miguel Barea Azcón



Hyponephele lycaon
© José Miguel Barea Azcón



Melitaea phoebe
© Javier Olivares



Melitaea nevadensis
© Javier Olivares



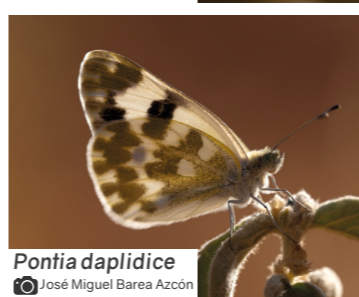
Familia
Pieridae



Aporia crataegi
© José Miguel Barea Azcón



Leptidea sinapis
© José Miguel Barea Azcón



Pontia daplidice
© José Miguel Barea Azcón



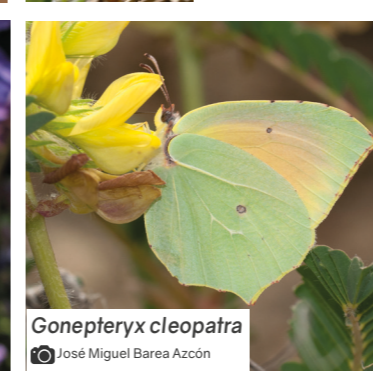
Pieris rapae
© José Miguel Barea Azcón



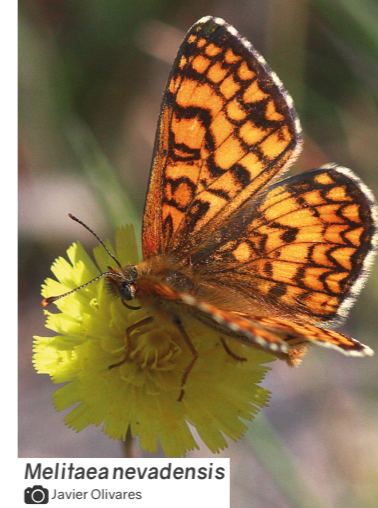
Anthocharis euphenoides
© José Miguel Barea Azcón



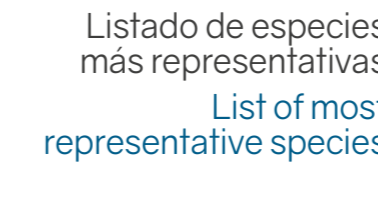
Pieris napi
© José Miguel Barea Azcón



Gonepteryx cleopatra
© José Miguel Barea Azcón



Melitaea nevadensis
© Javier Olivares



Pieris brassicae
© Javier Olivares



Mapa de situación
Situation map

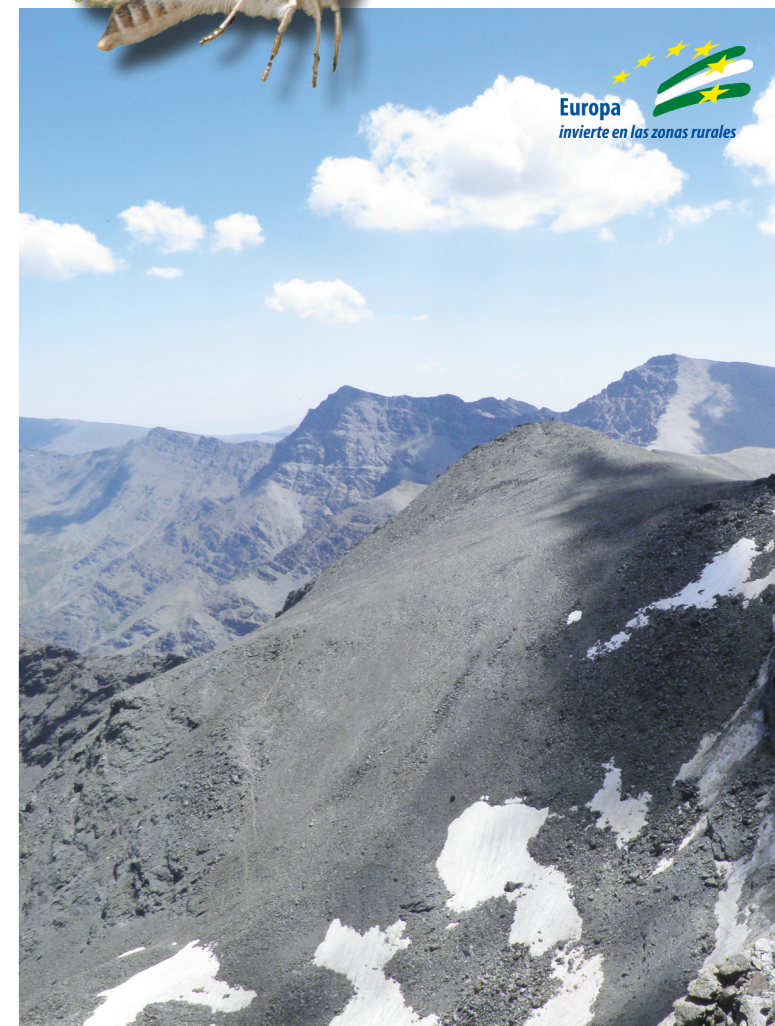


- Familia Hesperidae**
 - Carcharodus baeticus
 - Thymelicus sylvestris
 - Hesperia comma
 - Pyrgus cirsi
- Familia Papilionidae**
 - Iphioides feisthamelii
 - Parnassius apollo subsp. nevadensis
 - Zerynthia rumina
 - Papilio machaon
- Familia Lycaenidae**
 - Cupido lorquini
 - Agrides zullichi
 - Aricia cramera
 - Aricia morronensis
 - Polyommatus golgus
 - Polyommatus nivescens
 - Polyommatus celina
 - Satyrus spini
 - Lycaena phlaeas
 - Lycaena alciphron
 - Plebejus idas/Plebejus argus
 - Polyommatus amandus

Listado de especies más representativas
List of most representative species

- Familia Nymphalidae**
 - Coenonympha dorus
 - Erebia hispania
 - Pyronia bathseba
 - Melanargia lachesis
 - Melanargia occitanica
 - Melanargia ines
 - Hipparchia fidia
 - Satyrus actaea
 - Euphydryas aurinia
 - Issoria lathonia
 - Argynnis pandora
 - Nymphalis polychloros
 - Aglais urticae
 - Vanessa atalanta
 - Vanessa cardui
 - Pararge aegeria
 - Lasiommata megera
 - Hyponephele lycaon
 - Hipparchia alcyone
 - Hipparchia semele
 - Hipparchia statilinus
 - Brintesia circe
 - Chazara briseis
 - Melitaea phoebe
 - Melitaea nevadensis
- Familia Pieridae**
 - Gonepteryx cleopatra
 - Pieris rapae
 - Pieris brassicae
 - Pieris napi
 - Aporia crataegi
 - Leptidea sinapis
 - Pontia daplidice
 - Anthocharis cardamines/Anthocharis euphenoides

MARIPOSAS DIURNAS
BUTTERFLIES
SIERRA NEVADA



www.ecoturismosierranevada.com
Guías de naturaleza, Alojamientos, Restaurantes
Artesanía, educación ambiental...

Edita: AFCETS Sierra Nevada; Coordinadores: Pérez B., Buscarons R., Madrona M.T., Poveda J.C. & Ther. F.
Autores: Barea J.M., Olivares, J., Poveda J.C., Madrona M.T., Pérez B. & Ther. F.; Diseño y Maquetación: NUBIA Consultores.; Impresión: EGONDI ARTES GRAFICAS S.L.; D.L. GR 119-2020; ISBN: 978-84-09-35007-0
Fotografías de portada: Cumbres de Sierra Nevada © NUBIA Consultores A. arfaxenses © José Miguel Barea Azcón

SIERRA NEVADA

MARIPOSAS DIURNAS
BUTTERFLIES



Pico Trevenque © Juan Carlos Poveda Vera

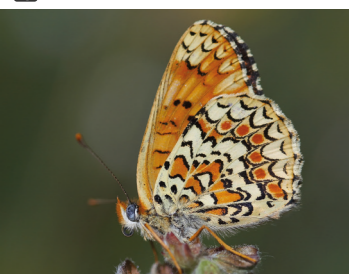
Nuestro espacio protegido, se encuentra en uno de los territorios con mayor biodiversidad del continente europeo. A su enorme diversidad botánica, se asocia una espectacular complejidad entomológica, con más de 200 especies endémicas (casi 300 si consideramos las subespecies).

La abundancia de nuestras mariposas se sitúa en torno a las 120 especies, muchas de ellas análogas a los ambientes alpinos del continente europeo, de las estepas asiáticas y de zonas áridas del norte de África, encontrando también elementos exclusivamente mediterráneos y béticos. En este cuaderno, mostramos algunas de las más llamativas y representativas.

The Sierra Nevada range is a protected area with the highest percentage of exclusive plant species in Europe. Its enormous botanical diversity is associated with a spectacular entomological complexity, with more than 200 endemic species (almost 300 if we consider the subspecies) of insects.

The abundance of our butterflies is around 120 species, many of which are analogous to those living in the alpine environments of the European continent, in the Asian steppes, and in the arid zones of North Africa. But others are exclusive to the Mediterranean or the Baetic ranges. In this small guide, we show some of the most striking, exclusive and representative butterflies of our mountains.

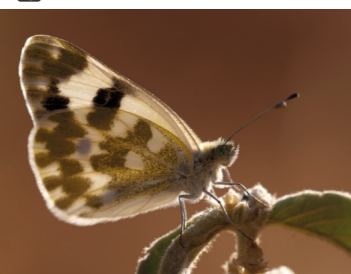
Melitaea phoebe
© Javier Olivares



Lycaena phlaeas
© José Miguel Barea Azcón



Pontia daplidice
© José Miguel Barea Azcón



Hipparchia statilinus
© Javier Olivares



Carcharodus baeticus
© Javier Olivares



Hesperia comma
© José Miguel Barea Azcón



Pyrgus cirsii
© José Miguel Barea Azcón



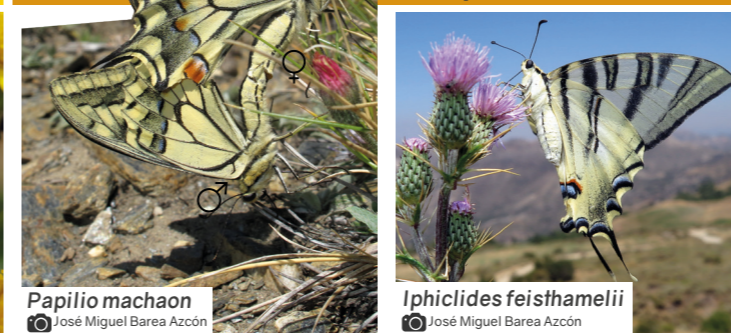
Thymelicus sylvestris
© José Miguel Barea Azcón



Zerynthia rumina
© José Miguel Barea Azcón



Parnassius apollo
subsp. *nevadensis*
© José Miguel Barea Azcón



Papilio machaon
© José Miguel Barea Azcón



Iphiclides feisthamelii
© José Miguel Barea Azcón



Familia
Hesperiidae



Familia
Papilionidae



Lycaena alciphron
© José Miguel Barea Azcón



Polyommatus golgus
© José Miguel Barea Azcón



Plebejus idas
© José Miguel Barea Azcón



Cupido lorquini
© José Miguel Barea Azcón



Lycaena alciphron
© José Miguel Barea Azcón



Polyommatus nivescens
© José Miguel Barea Azcón



Polyommatus amandus
© José Miguel Barea Azcón



Lycaena phlaeas
© José Miguel Barea Azcón



Polyommatus celina
© José Miguel Barea Azcón



Familia
Lycaenidae



Aricia morronensis
© José Miguel Barea Azcón



Agriades zullichi
© José Miguel Barea Azcón



Aricia cramera
© José Miguel Barea Azcón



Aricia artaxerses
© José Miguel Barea Azcón



Satyrium spini
© José Miguel Barea Azcón