

GOOD PRACTICE



- Please leave rubbish in the bins provided
- Walk on the marked paths
- Please respect private property



- The capture of animals is not permitted
- Starting fires is strictly forbidden
- Fishing is prohibited
- Open camping is not permitted

Emergency phone: 112

CÁDIZ MÁLAGA



PARQUE NATURAL
Los Alcornocales

MORE INFORMATION

Natural Park Office Los Alcornocales
Pza. San Jorge n.º 1. Alcalá de los Gazules. Cádiz. Tel. 956 41 86 01
Cortes de la Frontera Visitor's Centre
Av. de la Democracia s/n. Cortes de la Frontera. Málaga. Tel. 952 15 45 99
ventanadelvisitante.



CÁDIZ-MÁLAGA

PARQUE NATURAL
Los Alcornocales



Río Hozgarganta



Junta de Andalucía
Consejería de Agricultura, Ganadería,
Pesca y Desarrollo Sostenible

OTHER CATEGORIES OF PROTECTION



• ROUTE

Linear

• LENGTH (OUTWARD)

3,5 km

• ESTIMATED TIME (OUTWARD)

1 hour

• DIFFICULTY

Low

• TYPE OF TRAIL

Compacted lane or path with cobbled or rocky surface.

• LANDSCAPE / VEGETATION

Wide panoramic views of the valley, orchards and the remains of old buildings (mills, artillery factory, water channel, castle). Along the river bed there is a predominance of oleanders, as well as eucalyptus, carob, wild olive, cork oak and the occasional gall oak.

• SHADE

Scant

• SPECIAL AUTHORISATION

Not required

• RECOMMENDATIONS

Carry drinking water and wear suitable clothing and footwear. Check that the water from fountains is safe to drink.

• PROVINCE / MUNICIPALITIES

Cádiz / Jimena de la Frontera

• SHEETS OF MTN MAP 1:50.000

1071 - Jimena de la Frontera

• START / END COORDINATES

36° 26' 12,68"N – 5° 27' 18,20"O

36° 25' 42,50"N – 5° 27' 10,23"O



HOW TO GET THERE

From Jimena, next to the Rodete mill, the start of the trail is located. Other options are: along the path of La Encubierta, accessing it halfway along the route, or doing it in the opposite direction to the one described herein, starting on the track that comes off to the left of the road to La Cruz Blanca, where it is easy to find parking areas, and thus avoiding the steep slope described in the text.



PARKING

Depending on the chosen starting point, parking spaces in the streets of Jimena de la Frontera, or in the widening of the track.



PUBLIC TRANSPORT

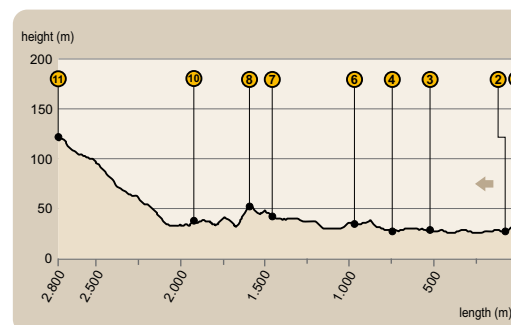
The principal company running regular bus routes in the area is Transportes Comes (tel. 902 19 92 08; www.tgcomes.es).



OTHER TRAILS

From Jimena de la Frontera there is another trail: the Vereda de Ubrique-Asomadillas trail. The GR-7 long-distance trail, which links Tarifa with Andorra and continues to the Greek Peloponnese, passes through Jimena de la Frontera. From here it is connected with Los Barrios and Castellar, and Ubrique and Benaocaz.

PROFILE OF ROUTE



• MAXIMUM GRADIENT

100 m

• MAXIMUM HEIGHT

125 m

• MINIMUM HEIGHT

25 m

A GUARD ON THE CHRISTIAN-NASRID BORDER

Located in the highest part of Jimena de la Frontera, the walled enclosure, with its merlons and battlements, and its keep stand out. The castle has been owned by Christians for barely forty-nine years during the more than two centuries that the border between kingdoms lasted.

The Muslim construction was built on Roman remains, perfectly adapted to the terrain and designed for defence and to withstand long sieges (with beautifully arched cisterns to store water). A first line of defence is made up of the towers furthest from the upper plateau of the hill, including the one located at the front of the wall, in the area with the lowest slope, which controlled access to the enclosure, and in the walls of which we can find Roman building materials. The rest of the towers, located at intervals, are key pieces in the strategic organisation of the complex, constituting permanent guard posts, true independent fortresses.



The circular keep, exceptional in Muslim military architecture, consists of two vaulted levels, concealing the remains of an older, polygonal tower inside.

Birds of prey such as the kestrel nest in the hollows and hollows of the walls.





Trail



Río Hozgarganta

The Royal Artillery Factory

There are three possible beginnings to this trail, and here we describe the route from its southernmost access, which descends from Jimena, towards the river, to the Pasada de Alcalá (check [1] on the map). Immediately afterwards, we will come across the Rodete mill [2].

The road runs parallel to the River Hozgarganta and the enormous cao [3], the water conduction channel of the Royal Artillery Factory of Charles III. It fed the azud [4], the containment dam, to ensure the water supply for the movement of the air bellows of the foundry.



Two alternatives for the same end of the journey

Our route skirts the hill of San Cristóbal, crowned by the castle of Jimena [5], the silhouette of which is outlined against the sky.



The proximity of the water allows the cultivation of vegetable gardens and riverside vegetation, with an abundance of oleanders. Further away from the riverbed, some eucalyptus, carob, wild olive, cork oak and gall oak trees provide shade for the path.

After a big bend, the mill of Las Peñas [6] is visible, and a little further on, the Huerto Clemente [7].

The second option follows the course of the river along the cobbled path and passages dug in the rock [10], close to an area where the water reaches a depth that allows hikers and locals to bathe.



Afterwards, the route moves away from the vicinity of the river to connect with a forest track that, after a steep slope, will lead us close to the exit of the village, the point where the trail ends [11].



The Royal Artillery Factory was built during the second half of the 18th century for the manufacture of war material (mainly bombs) necessary for the defence of the overseas colonies. Numerous munitions were shipped from here to the mouth of the River Palmones during the Great Siege of Gibraltar (1779-1783).

Its difficult location, the seasonal nature of the water, the poor quality of the minerals and the vicissitudes of the kingdom forced its closure in a short time (1789). But part of its infrastructure was used for the important flour mill of Rodete.



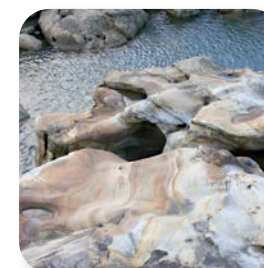
The Hozgarganta springs at the confluence of the La Saucedá and Pasada Llana gorges, at an altitude of 160 metres. It has a total length of 35 kilometres, being one of the few river courses without regulation in its entire basin; this circumstance, together with its ecological richness and its good state of conservation, make it very unique.

The road, now paved, offers two alternatives. The first, on a slope, is the path known as La Encubierta [8], which brings us closer to the village between orchards and sufficient shade, passing by the spring of the same name [9], where we can refresh ourselves before tackling the last stretch.



In both cases, a tour to the castle affords beautiful views over the route and the border area between the ancient medieval kingdoms of Granada and Castile.

Likewise, the nearby Vereda de Ubrique-Asomadillas trail is a splendid viewpoint for a wider view of the Hozgarganta river basin.



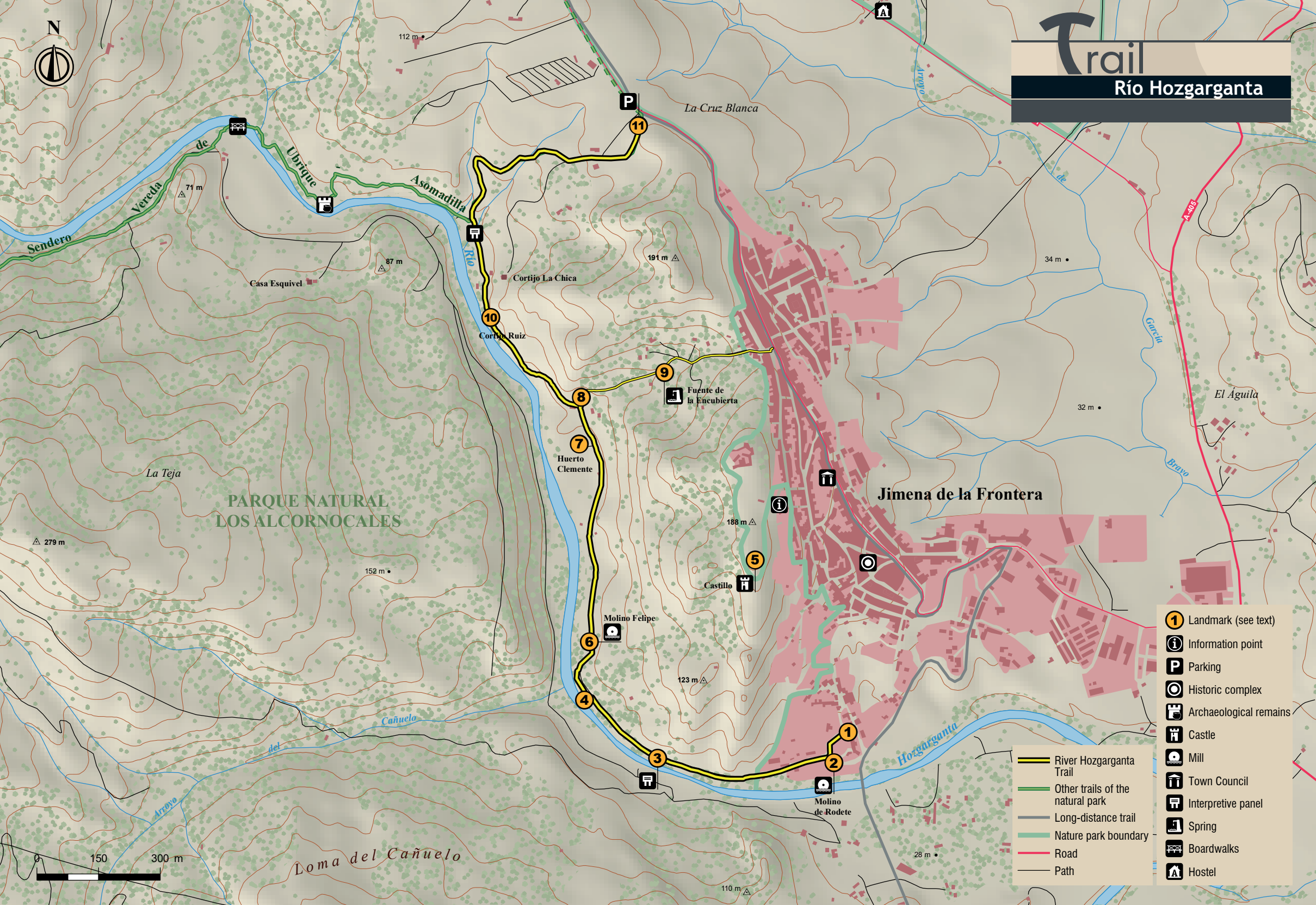
Frontier territory, with its fortress dominating the valley; the artillery factory, with the remains of a pioneering iron and steel foundry; the flour mills, with their hydraulic devices overlooking the waters of the River Hozgarganta, are more than enough attractions to walk along this path, sometimes dug into hard rock, at other times along peaceful banks that allow us to enjoy what may be the last unspoilt river in Andalusia.

An attractive river by nature and steeped in history, especially as it passes through Jimena de la Frontera.



Trail

Río Hozgarganta



PARQUE NATURAL
LOS ALCORNOCALES

Jimena de la Frontera

Loma del Cañuelo

- Landmark (see text)
- Information point
- Parking
- Historic complex
- Archaeological remains
- Castle
- Mill
- Town Council
- Interpretive panel
- Spring
- Boardwalks
- Hostel

- River Hozgarganta Trail
- Other trails of the natural park
- Long-distance trail
- Nature park boundary
- Road
- Path

