



Agencia Andaluza del Conocimiento
CONSEJERÍA DE ECONOMÍA, INNOVACIÓN, CIENCIA Y EMPLEO



ANDALUSIAN SCIENCE AND TECHNOLOGY SYSTEM INDICATORS.

-2011-

Andalusian Knowledge Agency
Technology & Foresight Studies Department
October 2013



■ ■ ■ TABLE OF CONTENTS

INTRODUCTION	5
FINANCIAL RESOURCES	6
Andalusian R&D Own funds (thousand €). 1999-2011	6
GDP mp (base 2008) in Andalusia (million €). 1995-2011	7
R&D internal expenditure percentage in Andalusia on regional GDP. 1995-2011	8
R&D internal expenditure by sectors of performance in Andalusia (thousand €). 1988-2011	9
R&D Internal expenditure by public and private sectors in Andalusia (thousand €).1988-2011	10
R&D Internal expenditure by sectors of performance in Andalusia and Spain (thousand €). 2011	11
Inter-annual variation rate of R&D expenditure in Andalusia. 2000-2011	12
Inter-annual variation rate of R&D expenditure by sectors of performance in Andalusia. 2000-2011	13
HUMAN RESOURCES	14
R&D personnel (FTE) employed by sectors of performance in Andalusia. 1997-2011	14
R&D personnel (FTE) employed by public and private sectors in Andalusia. 1997-2011	15
R&D personnel (FTE) percentage employed by public and private sectors in Andalusia. 1997-2011	16
R&D personnel (FTE) by sector of employment and occupation in Andalusia. 1997-2011	17
Personnel employed in R&D in per thousand to active population in Andalusia. 1997-2011	18
Inter-annual variation rate of R&D personnel (FTE) in Andalusia. 2003-2011	19
R&D Researchers (FTE) in Andalusia. 1997-2011	20
R&D researchers (FTE) by sectors of performance in Andalusia. 2003-2011	21
Andalusian Universities teaching staff by gender. 1998-2012	22
Andalusian Universities professors by gender. 2004-2012	23
Andalusian Universities Student body by gender. 1998-2012	24
Andalusian Universities graduates by gender. 1998-2012	25

PAIDI ACTIONS	26
Number of R&D Groups in Andalusia. 1988-2011	26
Distribution of R&D Groups by scientific-technical areas of PAIDI. 2011	27
Distribution of R&D Groups by institutions. 2011	28
Funding granted to R&D Groups by institutions (€). 2002-2010	29
Funding granted to R&D Groups by scientific-technical areas of PAIDI (€). 2002-2010	30
R&D Groups average assessment. 2000-2010	31
Personnel of R&D Groups by academic qualification in Andalusia. 1997-2011	32
Number of Excellence Projects in Andalusia. 2005-2011	33
Distribution of Excellence Projects by scientific-technical areas of PAIDI. 2011	34
Distribution of Excellence Projects by institutions. 2011	35
Funding granted to Excellence Projects by institutions (€). 2005-2011	36
Funding granted to Excellent Projects by scientific-technical areas of PAIDI (€). 2005-2011	37
Number of incentives granted to enhance researchers 'mobility and improvement. 2000-2011	38
Percentage of female researchers recipients of R&D groups and excellence projects incentives. 2005-2010	39
INNOVATION	40
Number of R&D performing companies by level of technology. 2002-2011	40
Total expenditure on innovative activities in Andalusia (thousand €). 2003-2011	41
Number of companies with innovative activities in Andalusia. 2005-2011	42
Number of innovative companies in Andalusia. 2003-2011	43
Number of EIN companies. 2003-2011	44
Intensity of innovation in Andalusia. 2005-2011	45
OUTPUTS	46
Number of patent applications and utility models in Andalusia. 1990-2011	46
Number of ISI documents in Andalusia. 2000-2011	47
Incentives granted to infrastructures, equipment and management by institutions. 2010	48
Summons of the National Plan 2008-2011 in Andalusia by participation modality. 2011	49



Projects approved from National Plan of R&D&I sources. 2000-2011	50
Funding granted to R&D projects of National Plan of R&D&I by institutions. 2000-2011	51
Funding granted to R&D projects of National Plan of R&D&I by scientific-technical áreas. 2000-2011	52
Andalusian participation in the EU Framework Programme. 1990-2011	53
Distribution of the Funding granted by the EU Framework Programme Editions. 2011	54
HIGH TECHNOLOGY	55
R&D Internal expenditure in high tech sectors (thousand €). 2000-2011	55
R&D personnel (FTE) employed in high tech sectors. 2001-2011	56
Percentage of employed persons in high tech sectors to total employed persons. 2000-2011	57
Turnover in high-tech sectors (thousand €). 2000-2011	58
BIOTECHNOLOGY	59
R&D Internal expenditure in biotechnology in Andalusia (thousand €). 2008-2011	59
R&D Internal expenditure in biotechnology in Andalusia by sectors of performance (thousand €). 2008-2011	60
Percentage of employed persons in biotechnological activities in R&D (FTE) for profiles in Andalusia. 2008-2011	61
ABBREVIATIONS AND ACRONYMS	62
GLOSSARY OF TERMS	65

■ ■ ■ INTRODUCTION

The aim of this report is to provide a preview the state of the Andalusian Science and Technology System in 2011¹.

In order to achieve this purpose, the Andalusian Knowledge Agency has:

- Compiled, tabulated and graphically represented all the indicators and statistics delivered by the most relevant international, national and regional official entities;
- Developed statistics on the Andalusian researchers 'participation in the Seventh Framework Programme calls for RDI (FP7), the R&D&I National Plan and the Andalusian Research, Development and Innovation Plan 2007-2013 (PAIDI Plan);
- Graphically represented the most relevant variables temporary evolution and, when possible, displayed regionalised information by Autonomous Communities to facilitate comparative analysis.

The information contained in this report is organized into five major sections:

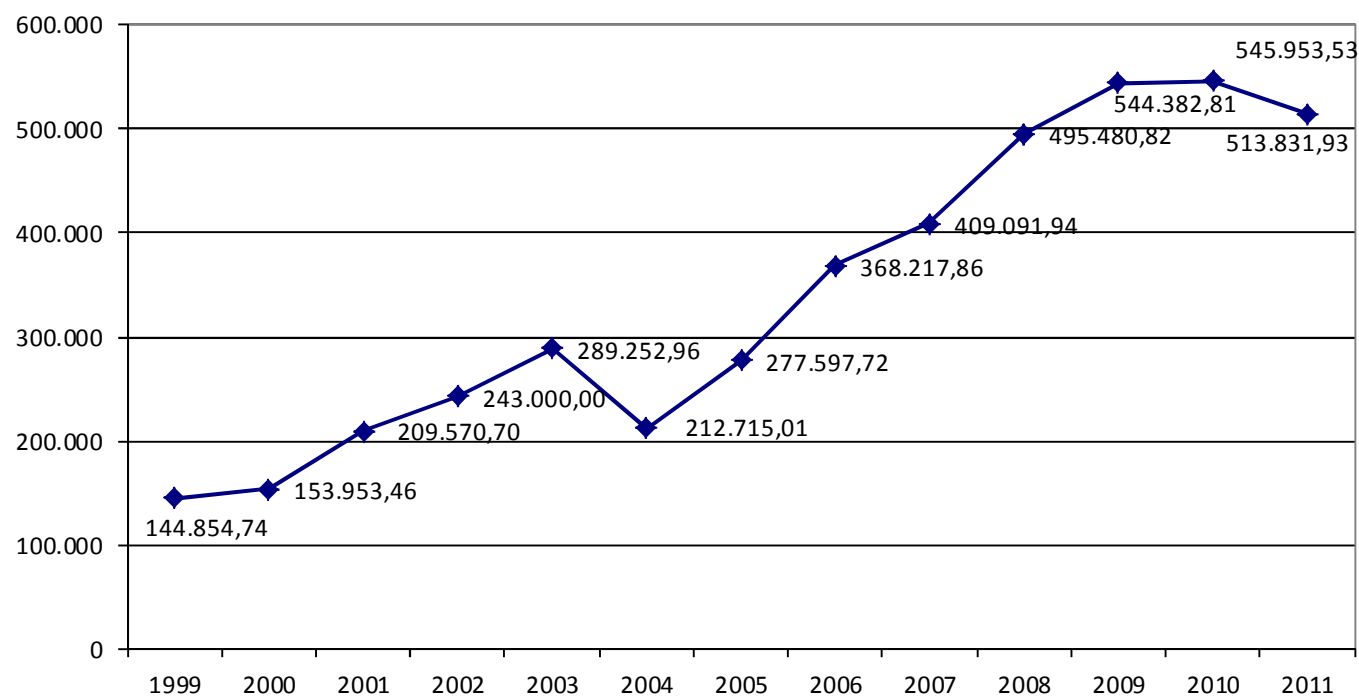
- Financial Resources: Figures reported on public funding provided by the Andalusian Regional Government R&D Budget as well as the R&D internal expenditure by sectors, both in absolute and inter-annual variation rates.
- Human Resources devoted to scientific-technological activities: data offered according to sectors, occupation, academic qualification and gender.
- PAIDI Actions: a set of indicators showing actions undertaken within the frame of the PAIDI Plan, which display the policies and adopted actions evolution.
- Innovation: expenditure on innovative activities; R&D companies regarding its technological level and the number of innovative companies by type, size and intensity of innovation.
- Tangible Outputs: results of R&D&I activities provided by the industrial property registries, by indexed scientific articles as well as by the participation in national and international R&D&I programmes.
- High Technology: indicators shown are R&D internal expenditure, personnel employed to R & D, personnel employed and turnover.
- Biotechnology: R&D internal expenditure by sector of employment and personnel employed to R & D dedicated to biotechnological activities.

The information sources used to develop the aforementioned indicators mainly come from official entities such as: the National Statistics Institute (INE); the Spanish Patent and Trademark Office (OEPM); the Ministry of Economy and Competitiveness (MINECO); the Andalusian Regional Government Budget Economic and Financial Report (Andalusian Regional Ministry for Finance and Public Administration); the General Direction for Research, Technology and Enterprise (DGIT) under the Andalusian Regional Ministry for Economy, Innovation, Science and Employment(CEICE); the Industrial Technological Development Centre (CDTI) and the Institute for Scientific Information (ISI).

¹ At the close of this report, some calls have not been resolved for which we considered the latest available to date 2010.

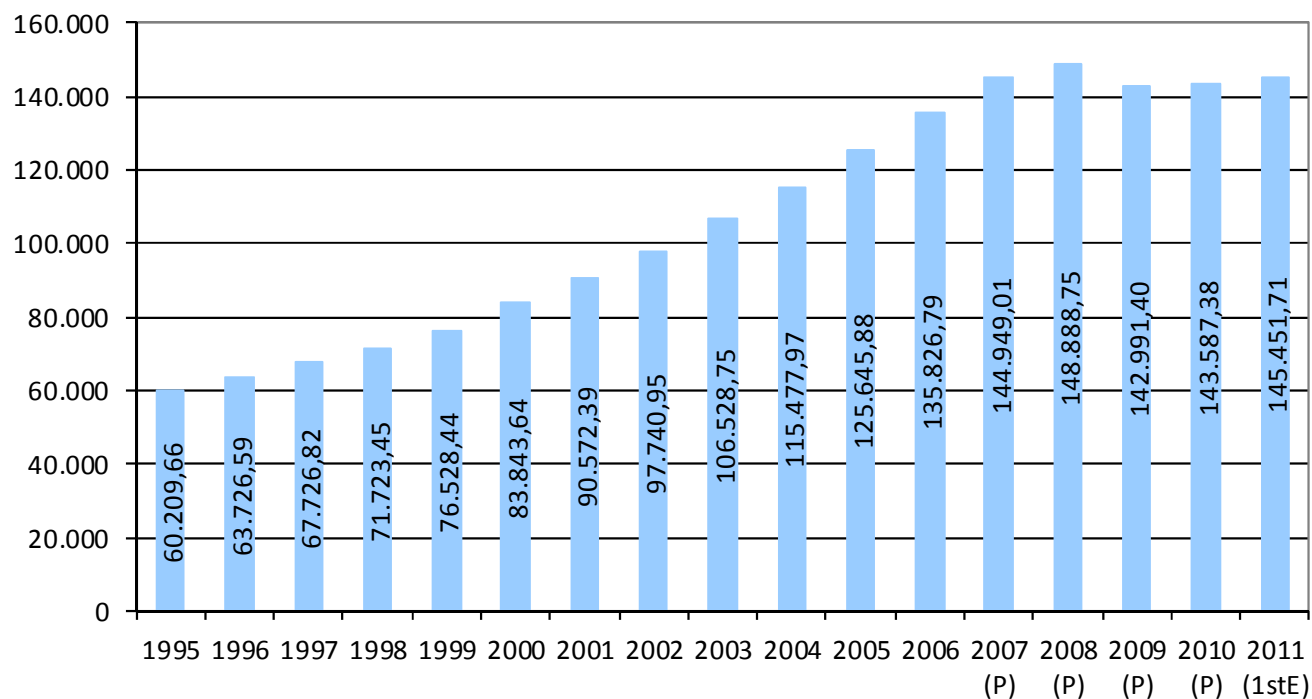
FINANCIAL RESOURCES

□ Andalusian R&D Own funds (thousand €). 1999-2011



Note: In 2004 and 2005, the publications of the Economic and Financial Reports differ, according to the budgetary programmes reallocation policies.
Source: Economic and Financial Reports. Andalusian Budget and own compilation.

□ GDP mp (base 2008) in Andalusia (million €). 1995-2011



Note: (P) Provisional data

(E) Estimated data

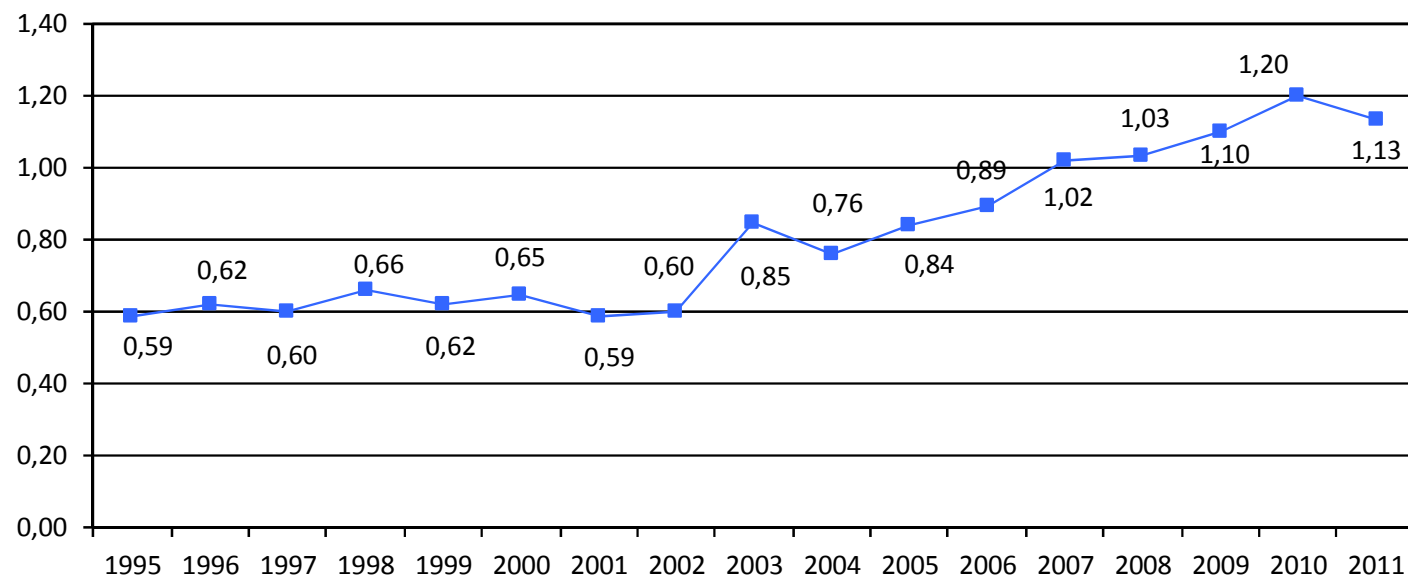
From the year 1995 up to 2000: GDP mp base 1995

From the year 2000: GDP mp base 2000

From the year 2008: GDP mp base 2008

Source: INE and own compilation

□ R&D internal expenditure percentage in Andalusia on regional GDP. 1995-2011



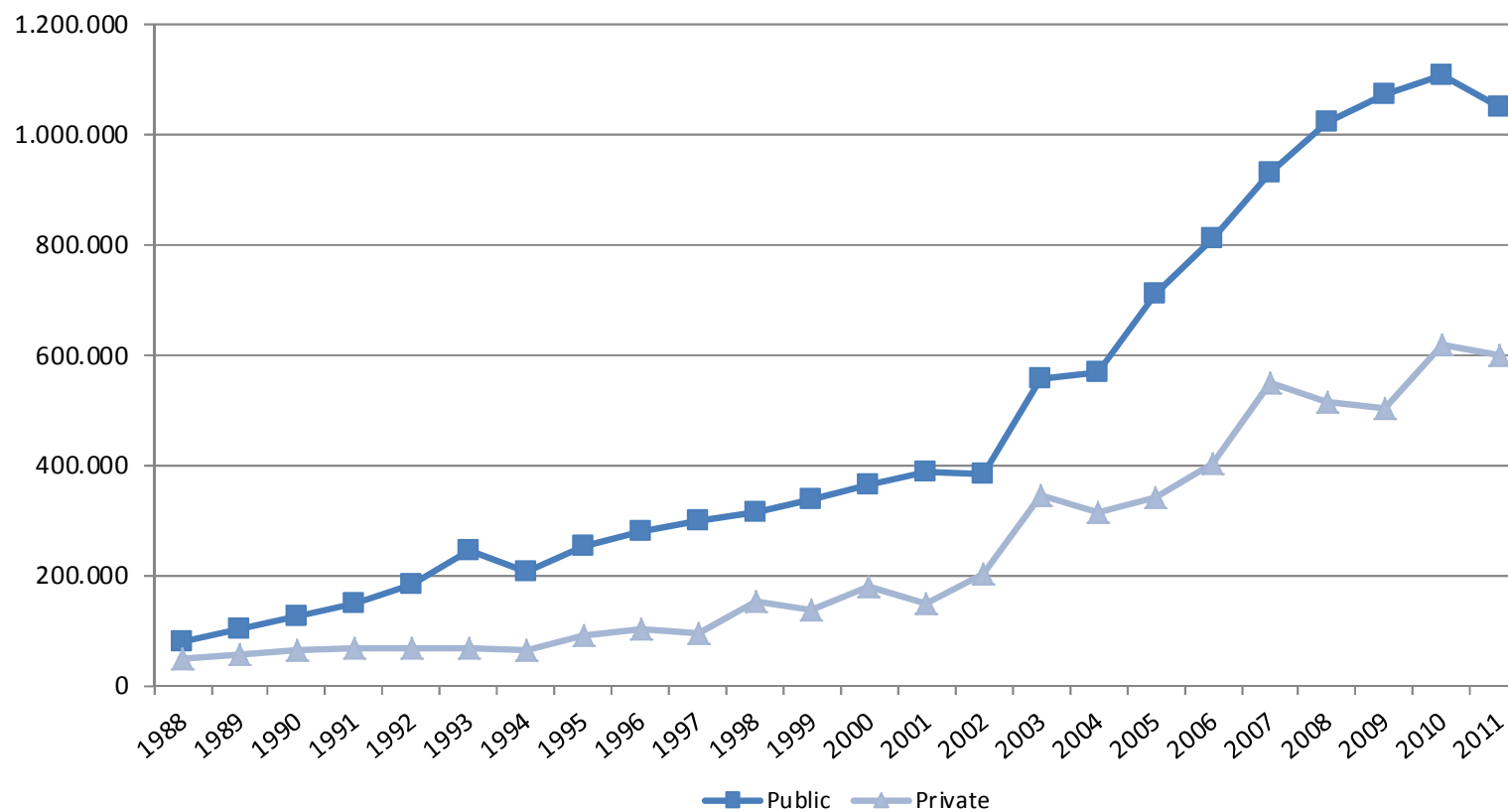
Source: INE and own compilation

□ R&D internal expenditure by sectors of performance in Andalusia (thousand €). 1988-2011

AÑO	UNIVERSITY		PUBLIC ADMIN		COMPANIES		P.N.P.I		TOTAL
	Amount	%	Amount	%	Amount	%	Amount	%	
1988	41.853,52	32,1%	39.430,61	30,3%	48.965,29	37,6%	0,00	0,0%	130.249,41
1989	60.932,78	38,2%	42.889,45	26,9%	55.872,34	35,0%	0,00	0,0%	159.694,57
1990	79.314,47	41,6%	47.606,54	25,0%	63.684,55	33,4%	0,00	0,0%	190.605,56
1991	93.852,90	43,8%	53.838,14	25,1%	66.717,91	31,1%	0,00	0,0%	214.408,95
1992	131.358,05	52,5%	51.903,36	20,8%	66.850,04	26,7%	0,00	0,0%	250.111,45
1993	188.780,15	60,1%	56.787,21	18,1%	68.302,41	21,8%	111,19	0,0%	313.980,95
1994	148.863,25	54,9%	56.238,28	20,8%	65.772,72	24,3%	109,34	0,0%	270.983,58
1995	178.006,33	51,6%	73.722,48	21,4%	91.887,83	26,7%	1.064,19	0,3%	344.680,83
1996	199.445,87	52,6%	78.606,37	20,7%	99.960,33	26,4%	1.129,90	0,3%	379.142,48
1997	228.351,45	57,7%	72.399,09	18,3%	94.075,91	23,8%	1.029,88	0,3%	395.856,34
1998	227.240,58	48,8%	86.094,11	18,5%	150.869,38	32,4%	1.198,40	0,3%	465.402,47
1999	240.496,55	50,7%	95.258,05	20,1%	137.475,62	29,0%	1.496,11	0,3%	474.726,34
2000	259.897,00	47,9%	103.092,99	19,0%	177.431,00	32,7%	1.735,00	0,3%	542.155,99
2001	269.030,00	50,0%	119.113,00	22,1%	149.510,00	27,8%	678,00	0,1%	538.331,00
2002	275.261,65	47,0%	106.936,35	18,3%	203.100,65	34,7%	368,35	0,1%	585.667,00
2003	403.997,00	44,7%	154.231,00	17,1%	344.246,00	38,1%	678,00	0,1%	903.152,00
2004	390.418,00	44,2%	179.568,00	20,3%	312.062,00	35,3%	865,00	0,1%	882.913,00
2005	467.762,00	44,5%	243.434,00	23,2%	338.761,00	32,2%	1.071,00	0,1%	1.051.028,00
2006	527.245,00	43,4%	283.184,00	23,3%	402.995,00	33,2%	392,00	0,0%	1.213.816,00
2007	592.828,00	40,1%	336.946,00	22,8%	548.041,00	37,1%	730,00	0,0%	1.478.545,00
2008	661.049,00	43,0%	361.330,00	23,5%	515.612,00	33,5%	955,00	0,1%	1.538.946,00
2009	683.680,00	43,3%	390.855,00	24,8%	501.471,00	31,8%	2.079,00	0,1%	1.578.085,00
2010	723.401,00	41,9%	382.958,00	22,2%	619.489,00	35,9%	917,00	0,1%	1.726.765,00
2011	708.973,00	43,0%	340.204,00	20,6%	598.228,00	36,3%	1.066,00	0,1%	1.648.471,00

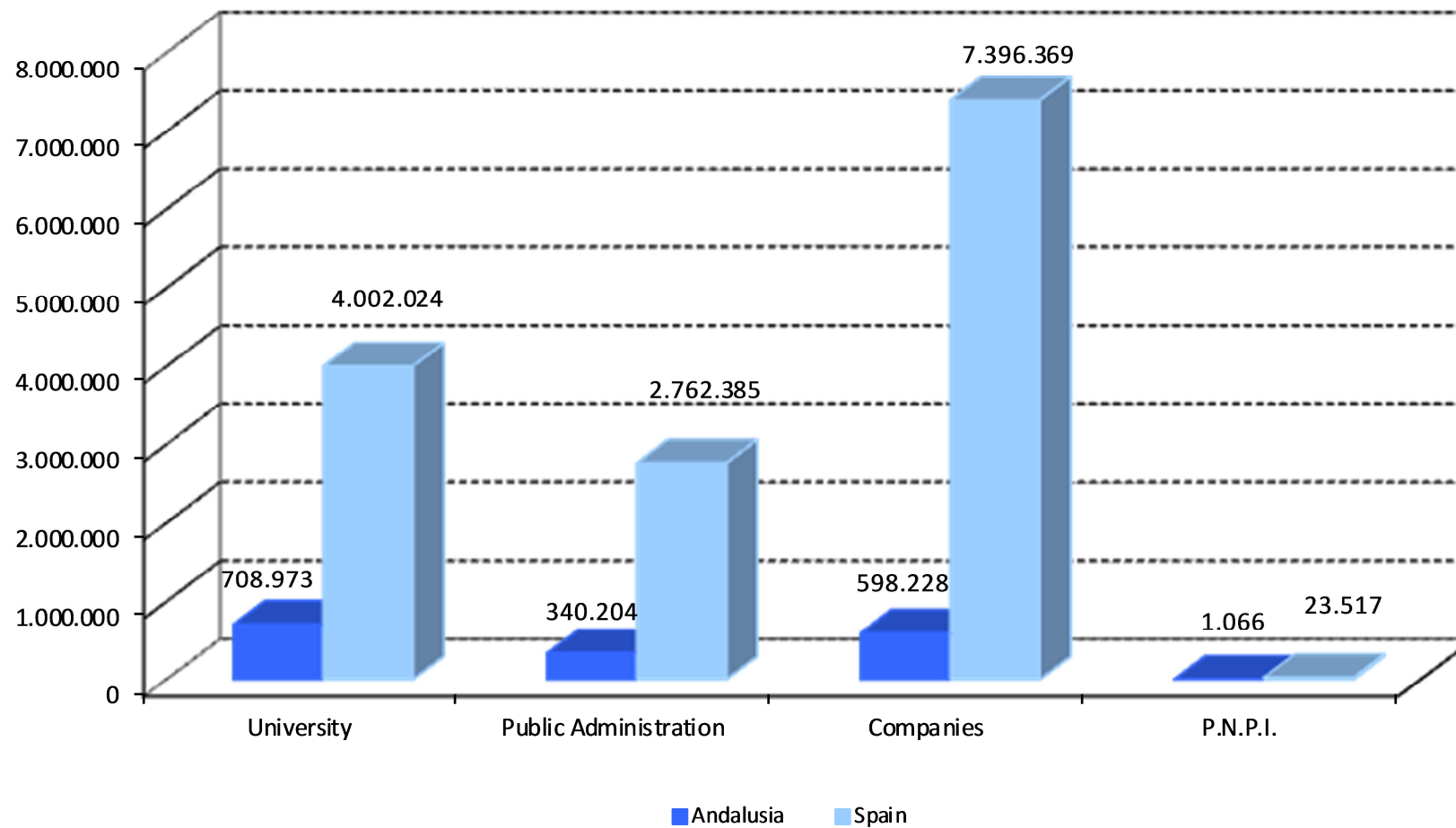
Source: INE and own compilation

□ R&D Internal expenditure by public and private sectors in Andalusia (thousand €). 1988-2011



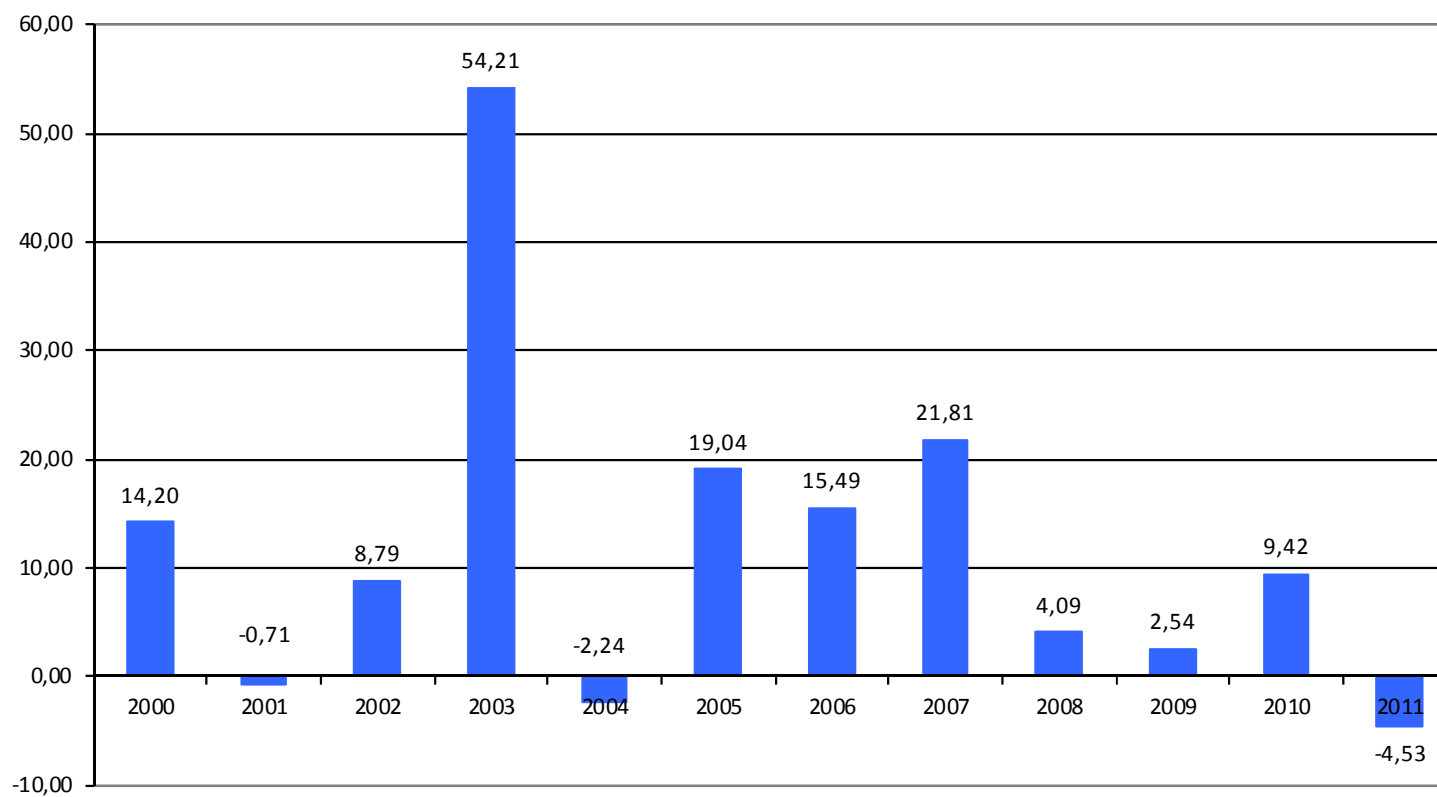
Source: INE and own compilation

□ R&D Internal expenditure by sectors of performance in Andalusia and Spain (thousand €). 2011



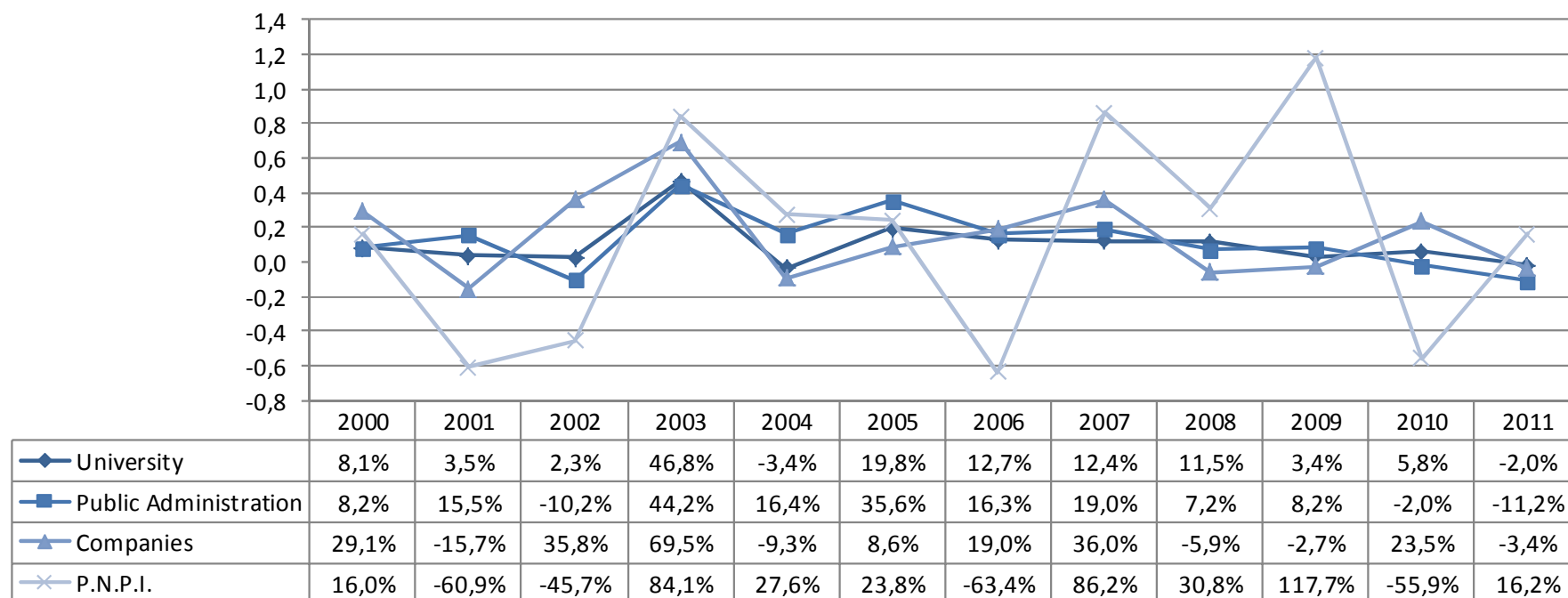
Source: INE and own compilation

□ Inter-annual variation rate of R&D expenditure in Andalusia. 2000-2011



Source: INE and own compilation

□ Inter-annual variation rate of R&D expenditure by sectors of performance in Andalusia. 2000-2011



—◆— University —■— Public Administration —▲— Companies —×— P.N.P.I.

Source: INE and own compilation

HUMAN RESOURCES

□ R&D personnel (FTE) employed by sectors of performance in Andalusia. 1997-2011

YEAR	UNIVERSITY		PUBLIC ADMIN.		COMPANIES		P.N.P.I.		TOTAL	PUBLIC SECTOR / PRIVATE SECTOR
	No.	%	No.	%	No.	%	No.	%		
1997	6.000,70	61,4%	2.233,50	22,9%	1.507,10	15,4%	26,10	0,3%	9.767,40	5,37
1998	6.522,80	59,6%	2.263,10	20,7%	2.128,50	19,4%	29,10	0,3%	10.943,50	4,07
1999	7.311,3	60,9%	2.758,4	23,0%	1.898,3	15,8%	34,3	0,3%	12.002,30	5,21
2000	7.146,90	53,1%	2.673,80	19,9%	3.576,10	26,6%	60,20	0,4%	13.457,00	2,70
2001	9.081,20	61,4%	3.058,20	20,7%	2.616,70	17,7%	29,20	0,2%	14.785,30	4,59
2002	8.129,80	58,1%	2.805,40	20,0%	3.064,60	21,9%	3,30	0,0%	14.003,10	3,56
2003	8.063,00	48,4%	3.547,50	21,3%	5.034,10	30,2%	15,80	0,1%	16.660,40	2,30
2004	9.129,40	53,5%	3.558,50	20,9%	4.369,20	25,6%	0,00	0,0%	17.057,10	2,90
2005	9.803,60	52,1%	4.103,30	21,8%	4.896,30	26,0%	0,00	0,0%	18.803,20	2,84
2006	10.162,60	48,4%	4.859,50	23,1%	5.986,70	28,5%	0,00	0,0%	21.008,80	2,51
2007	10.805,50	48,9%	5.527,50	25,0%	5.769,60	26,1%	0,00	0,0%	22.102,60	2,83
2008	11.206,90	48,2%	5.683,00	24,5%	6.337,30	27,3%	0,00	0,0%	23.227,20	2,67
2009	11.679,10	47,2%	6.099,00	24,6%	6.988,60	28,2%	0,00	0,0%	24.766,70	2,54
2010	12.179,50	47,3%	6.141,80	23,8%	7.452,70	28,9%	0,00	0,0%	25.774,00	2,46
2011	12.268,50	48,2%	5.678,70	22,3%	7.461,30	29,3%	25,00	0,1%	25.433,50	2,40

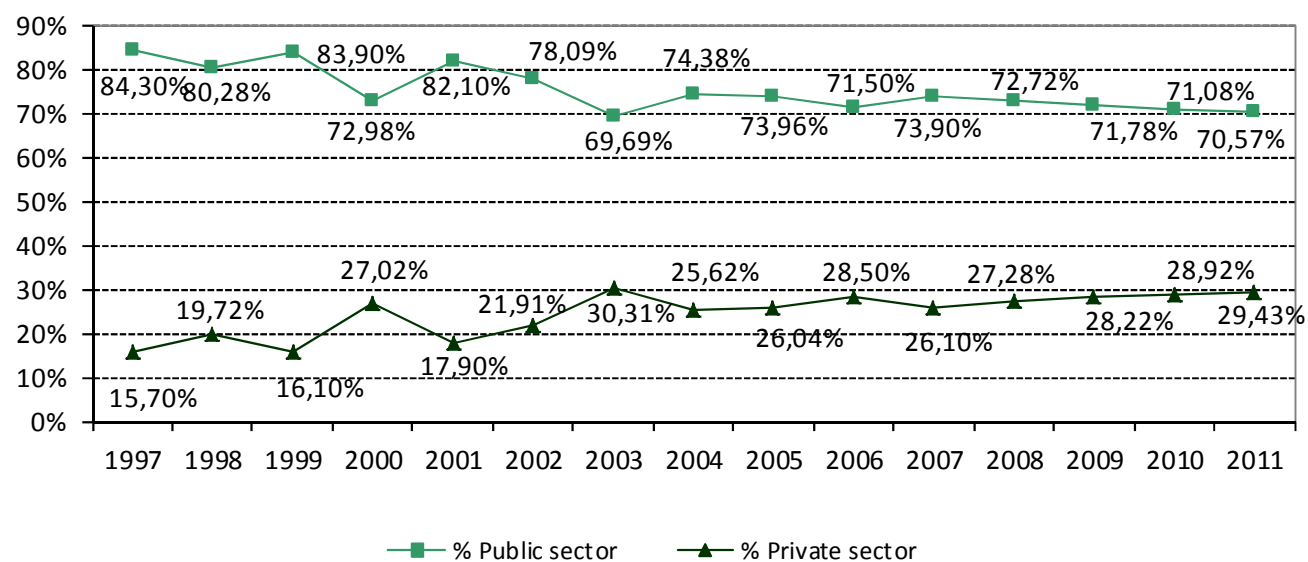
Note: From 2004 to 2010 PNPI data are included in the company sector
Source: INE and own compilation

□ R&D personnel (FTE) employed by public and private sectors in Andalusia. 1997-2011

YEAR	No. Public sector	No. Private sector	No. TOTAL	% Public sector	% Private sector
1997	8.234,20	1.533,20	9.767,40	84,30%	15,70%
1998	8.785,90	2.157,60	10.943,50	80,28%	19,72%
1999	10.069,70	1.932,60	12.002,30	83,90%	16,10%
2000	9.820,70	3.636,30	13.457,00	72,98%	27,02%
2001	12.139,40	2.645,90	14.785,30	82,10%	17,90%
2002	10.939,20	3.069,10	14.008,30	78,09%	21,91%
2003	11.610,50	5.049,90	16.660,40	69,69%	30,31%
2004	12.687,90	4.369,20	17.057,10	74,38%	25,62%
2005	13.906,90	4.896,30	18.803,20	73,96%	26,04%
2006	15.022,10	5.986,70	21.008,80	71,50%	28,50%
2007	16.333,00	5.769,60	22.102,60	73,90%	26,10%
2008	16.889,90	6.337,30	23.227,20	72,72%	27,28%
2009	17.778,10	6.988,60	24.766,70	71,78%	28,22%
2010	18.321,30	7.452,70	25.774,00	71,08%	28,92%
2011	17.947,20	7.486,30	25.433,50	70,57%	29,43%

Source: INE and own compilation

□ R&D personnel (FTE) percentage employed by public and private sectors in Andalusia. 1997-2011



Source: INE and own compilation

□ R&D personnel (FTE) by sector of employment and occupation in Andalusia. 1997-2011

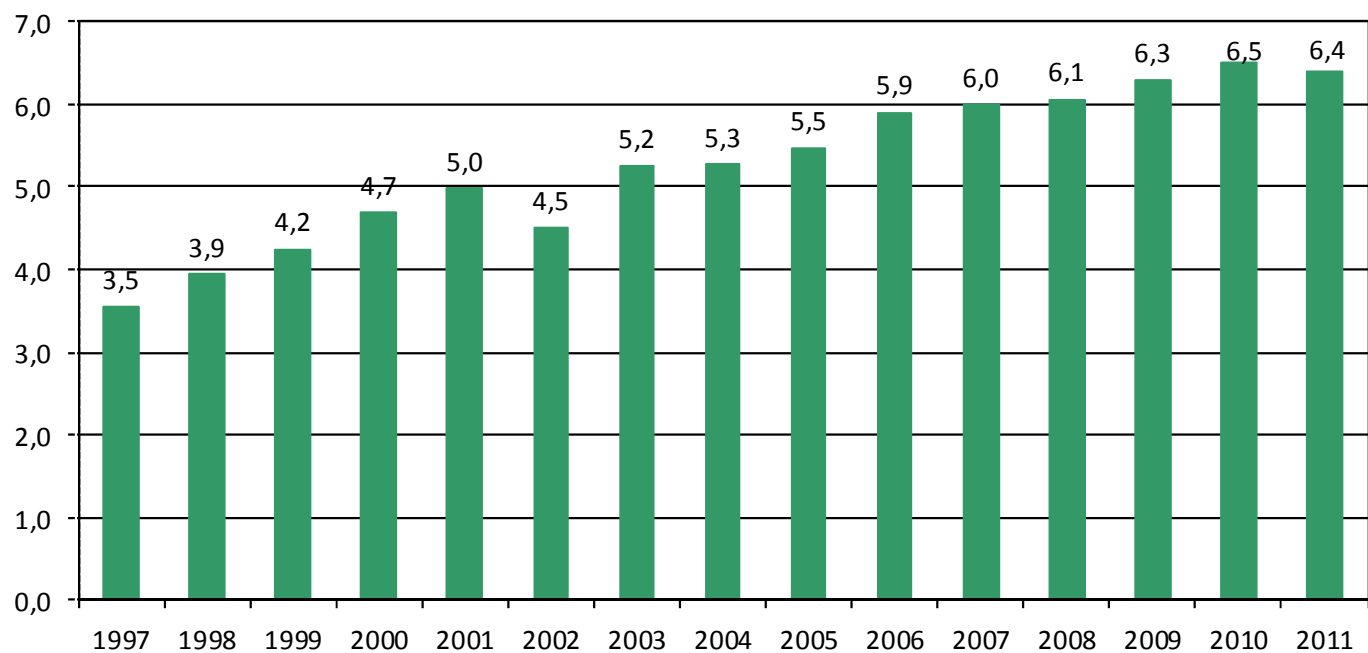
YEAR	No. Total Personnel	No. Technicians and Assistants	No. Researchers	(Technician – Assistant) / Researcher
1997	9.767,40	3.077,20	6.690,20	0,46
1998	10.943,50	3.309,90	7.633,60	0,43
1999	12.002,30	3.342,00	8.660,30	0,39
2000	13.457,00	4.247,20	9.209,80	0,46
2001	14.785,30	3.968,70	10.816,60	0,37
2002	14.008,30	n.a.	n.a.	-
2003	16.660,40	5.570,70	11.089,70	0,50
2004	17.057,10	5.059,20	11.997,90	0,42
2005	18.803,20	5.584,70	13.218,50	0,42
2006	21.008,80	8.385,00	12.623,80	0,66
2007	22.102,60	8.870,10	13.232,50	0,67
2008	23.227,20	9.450,30	13.776,90	0,69
2009	24.766,70	10.100,80	14.665,90	0,69
2010	25.774,00	10.710,00	15.064,00	0,71
2011	25.433,50	10.824,20	14.609,30	0,74

Note: n.a.: not available

–: Numerical information not applicable

Source: INE and own compilation

□ Personnel employed in R&D in per thousand to active population in Andalusia. 1997-2011



Source: INE and own compilation

□ Inter-annual variation rate of R&D personnel (FTE) in Andalusia. 1997-2011

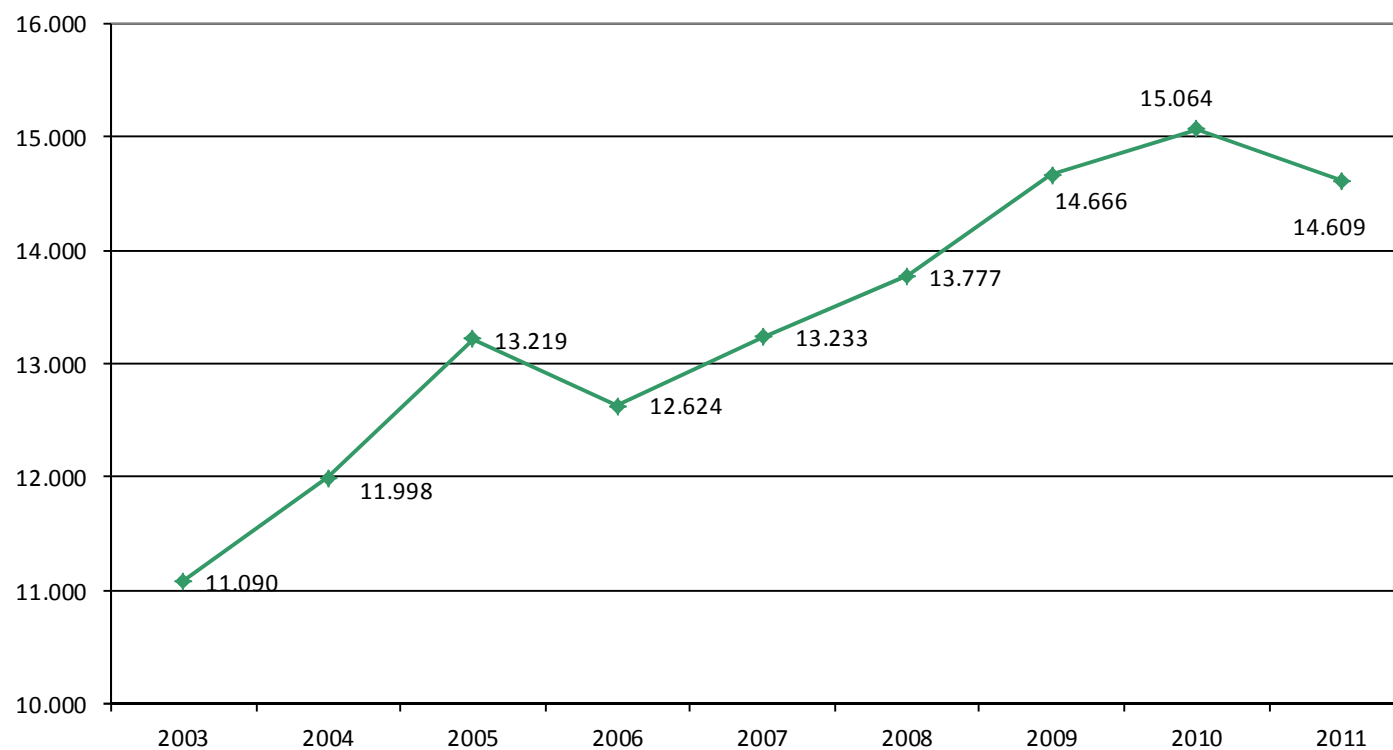
YEAR	No. Researchers	No. Technicians and Assistants	No. Total Personnel	Rate of inter-annual variation of Researcher personnel	Rate of inter-annual variation of Technician and Assistant Personnel	Rate of inter-annual variation of Total Personnel
1997	6.690,20	3.077,20	9.767,40	-	-	-
1998	7.633,60	3.309,90	10.943,50	14,10%	7,56%	12,04%
1999	8.660,30	3.342,00	12.002,30	13,45%	0,97%	9,68%
2000	9.209,80	4.247,20	13.457,00	6,35%	27,09%	12,12%
2001	10.816,60	3.968,70	14.785,30	17,45%	-6,56%	9,87%
2002	n.a.	n.a.	14.008,30	n.a.	n.a.	n.a.
2003	11.089,70	5.570,70	16.660,40	-	-	-
2004	11.997,90	5.059,20	17.057,10	8,19%	-9,18%	2,38%
2005	13.218,50	5.584,70	18.803,20	10,17%	10,39%	10,24%
2006	12.623,80	8.385,00	21.008,80	-4,50%	50,14%	11,73%
2007	13.232,50	8.870,10	22.102,60	4,82%	5,79%	5,21%
2008	13.776,90	9.451,20	23.228,10	4,11%	6,55%	5,09%
2009	14.665,90	10.100,80	24.766,70	6,45%	6,87%	6,62%
2010	15.064,00	10.710,00	25.774,00	2,71%	6,03%	4,07%
2011	14.609,30	10.824,20	25.433,50	-3,02%	1,07%	-1,32%

Note: n.a.: not available

-: Numerical information not applicable

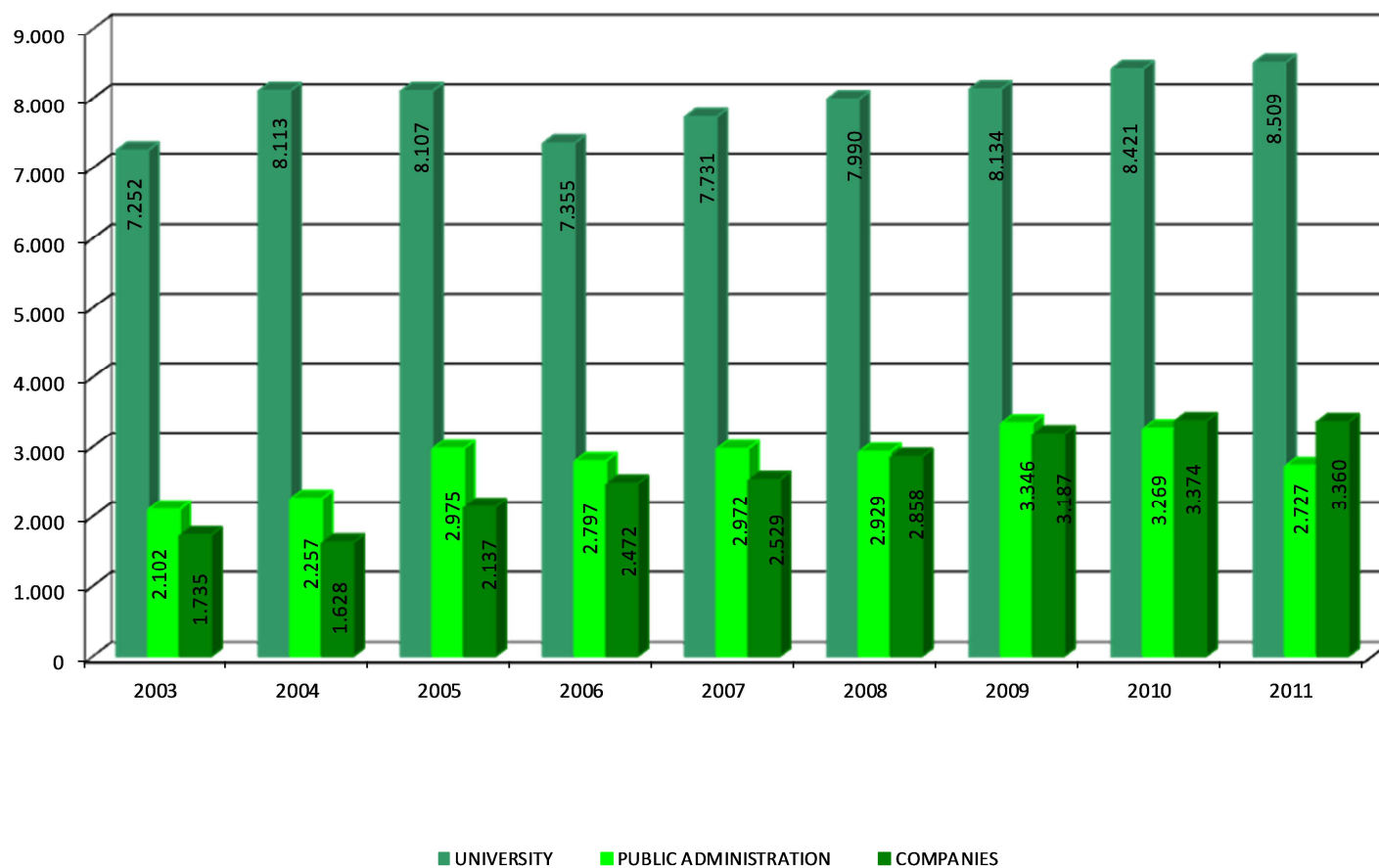
Source: INE and own compilation

□ R&D Researchers (FTE) in Andalusia. 2003-2011



Source: INE and own compilation

□ R&D researchers (FTE) by sectors of performance in Andalusia.2003-2011



Source: INE and own compilation

□ **Andalusian Universities teaching staff by gender. 1998-2012**

	No. Teaching body of the Public Universities		
	Men	Women	TOTAL
Course 1998-1999	10.099	4.629	14.728
Course 1999-2000	10.701	5.048	15.749
Course 2000-2001	11.192	5.453	16.645
Course 2001-2002	10.351	5.072	15.423
Couse 2002-2003	10.414	5.119	15.533
Course 2003-2004	10.480	5.235	15.715
Course 2004-2005	10.698	5.405	16.103
Course 2005-2006	10.831	5.569	16.400
Course 2006-2007	11.181	5.848	17.029
Course 2007-2008	11.461	6.152	17.613
Course 2008-2009	11.683	6.367	18.050
Course 2009-2010	12.117	6.913	19.030
Course 2010-2011	12.199	7.231	19.430
Course 2011-2012	11.499	6.632	18.131

Source: MECS and own compilation

□ Andalusian Universities professors by gender. 2004-2012

	No. University Professors			No. University College Professors			No. TOTAL			%	
	Men	Women	TOTAL	Men	Women	TOTAL	Men	Women	TOTAL	Men	Women
Course 2004-2005	1.249	167	1.416	368	168	536	1.617	335	1.952	82,84%	17,16%
Course 2005-2006	1.244	166	1.410	362	166	528	1.606	332	1.938	82,87%	17,13%
Course 2006-2007	1.199	166	1.365	344	162	506	1.543	328	1.871	82,47%	17,53%
Course 2007-2008	1.251	178	1.429	300	139	439	1.551	317	1.868	83,03%	16,97%
Course 2008-2009	1.251	186	1.437	271	128	399	1.522	314	1.836	82,90%	17,10%
Course 2009-2010	1.430	272	1.702	249	114	363	1.679	386	2.065	81,31%	18,69%
Course 2010-2011	1.533	321	1.854	224	107	331	1.757	428	2.185	80,41%	19,59%
Course 2011-2012	1.596	359	1.955	301	95	396	1.897	454	2.351	80,69%	19,31%

Source: MECS and own compilation

□ **Andalusian Universities Student body by gender. 1998-2012**

	No. Student body of the Public Universities		
	Men	Women	TOTAL
Course 1998-1999	124.593	143.261	267.854
Course 1999-2000	127.294	145.812	273.106
Course 2000-2001	121.846	143.611	265.457
Course 2001-2002	117.883	138.892	256.775
Couse 2002-2003	114.119	134.468	248.587
Course 2003-2004	109.782	130.943	240.725
Course 2004-2005	106.194	127.159	233.353
Course 2005-2006	104.234	126.387	230.621
Course 2006-2007	102.535	124.964	227.499
Course 2007-2008	101.878	124.794	226.672
Course 2008-2009	101.750	124.361	226.111
Course 2009-2010	104.326	126.391	230.717
Course 2010-2011	106.873	127.978	234.851
Course 2011-2012	107.765	130.785	238.550

Note: From the academic course 2008-2009 onwards, besides the students registered in 1st and 2nd cycles, the Degree, Masters and PhD students (3rd cycle) are assessed.
Source: MECS and own compilation

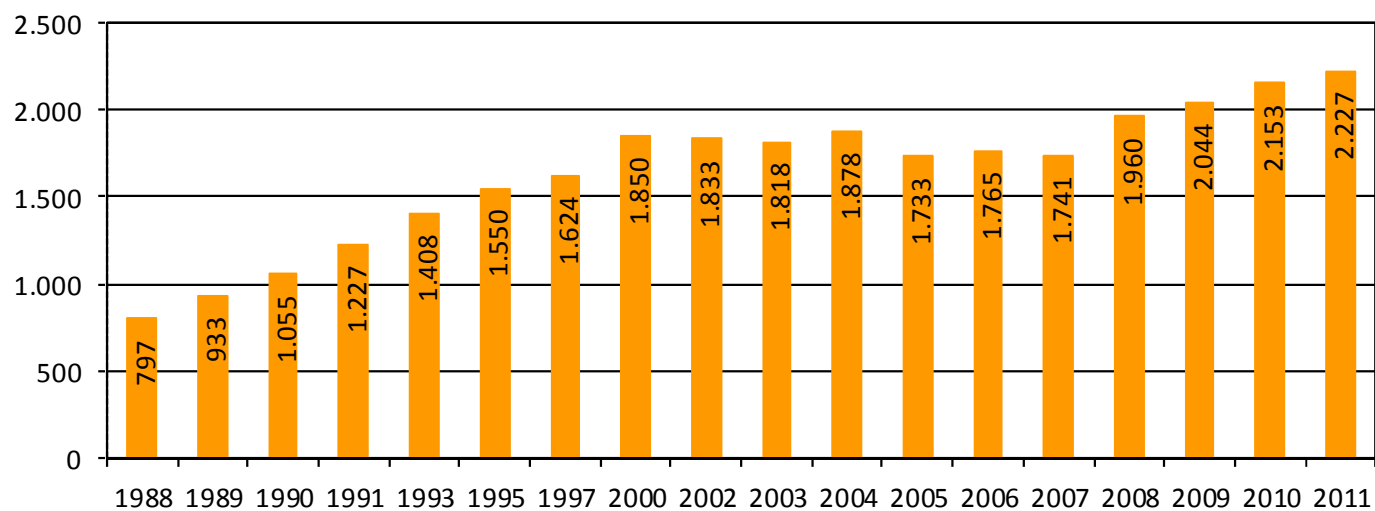
□ **Andalusian Universities graduates by gender. 1998-2012**

	No. Student body who finished studies of the Public Universities		
	Men	Women	TOTAL
Course 1998-1999	13.357	21.035	34.392
Course 1999-2000	13.683	20.342	34.025
Course 2000-2001	12.242	18.767	31.009
Course 2001-2002	14.024	20.598	34.622
Course 2002-2003	14.112	20.766	34.878
Course 2003-2004	13.711	20.387	34.098
Course 2004-2005	13.110	19.793	32.903
Course 2005-2006	12.143	18.803	30.946
Course 2006-2007	11.261	18.201	29.462
Course 2007-2008	11.304	18.436	29.740
Course 2008-2009	11.788	19.676	31.464
Course 2009-2010	12.294	20.083	32.377
Course 2010-2011	13.072	20.913	33.985
Course 2011-2012	13.980	20.819	34.799

Note: From the academic course 2010-2011 onwards, besides the students who finished 1st and 2nd cycles, the Degree, Masters and PhD students (3rd cycle) are assessed.
Source: MECS and own compilation.

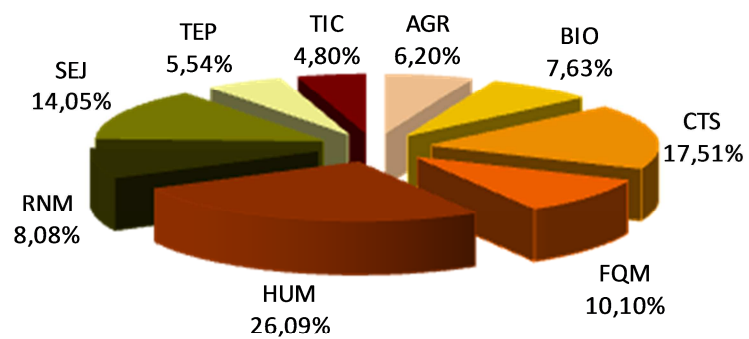
PAIDI ACTIONS

Number of R&D Groups in Andalusia. 1988-2011



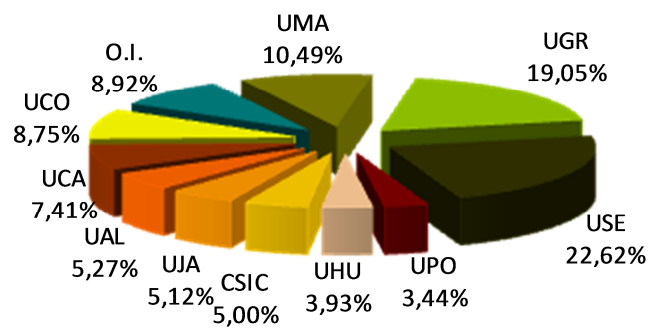
Source: DGITE and own compilation

□ Distribution of R&D Groups by scientific-technical areas of PAIDI. 2011



Source: DGITE and own compilation

□ Distribution of R&D Groups by institutions. 2011



Source: DGITE and own compilation

□ Funding granted to R&D Groups by institutions (€). 2002-2010

INSTITUTIONS	2002	2003	2004	2005	2006	2007	2008	2009	2010
University of Almeria	574.069,00	452.448,56	502.425,39	619.150,44	668.555,22	696.925,37	629.398,85	661.002,85	300.216,55
University of Cadiz	865.177,00	575.407,98	656.659,30	806.502,62	869.116,42	865.594,40	919.908,75	911.486,79	407.329,63
University of Cordoba	1.133.300,81	974.953,81	1.024.989,30	1.208.734,06	1.286.223,64	1.289.410,62	1.245.069,33	1.192.077,60	529.519,44
University of Granada	3.068.079,35	2.237.042,62	2.288.745,44	2.775.430,33	3.023.693,48	3.162.299,45	3.233.516,94	3.475.495,24	1.455.058,07
University of Huelva	366.724,40	276.567,28	299.706,55	386.517,96	469.583,41	462.845,45	424.900,61	503.127,88	211.870,45
University of Jaen	544.313,15	440.459,52	431.870,94	574.465,42	598.103,13	646.184,94	583.097,18	716.131,50	296.166,86
University of Malaga	1.661.131,85	1.028.570,10	1.009.927,99	1.276.953,45	1.369.770,66	1.341.001,35	1.434.083,55	1.585.954,02	681.477,03
University of Sevilla	2.503.010,00	2.078.675,99	2.202.773,77	2.597.050,83	2.884.566,78	3.075.762,51	2.650.835,82	2.849.946,33	1.283.103,31
University of Pablo de Olavide	380.194,00	179.733,60	203.642,76	261.961,74	360.768,73	474.983,75	657.871,75	542.581,01	226.655,92
CSIC	1.601.615,00	896.019,19	927.115,70	1.019.255,69	1.128.825,48	1.247.829,43	1.091.257,47	1.066.285,05	479.657,49
SAS / Foundations	673.915,23	n.a.	n.a.	n.a.	n.a.	660.676,44	483.753,01	606.124,56	342.245,11
IFAPA	n.a.	n.a.	n.a.	n.a.	n.a.	173.968,29	186.716,61	182.874,86	82.997,66
Others Institutions	n.a.	361.777,22	437.776,19	550.204,45	861.823,76	8.981,92	0,00	0,00	5.411,49
TOTAL	13.371.529,79	9.501.655,87	9.985.633,33	12.076.226,99	13.521.030,71	14.106.463,92	13.540.409,87	14.293.087,68	6.301.709,01

Note: n.a. - not available

The last available data are of 2010, pending resolution of 2011

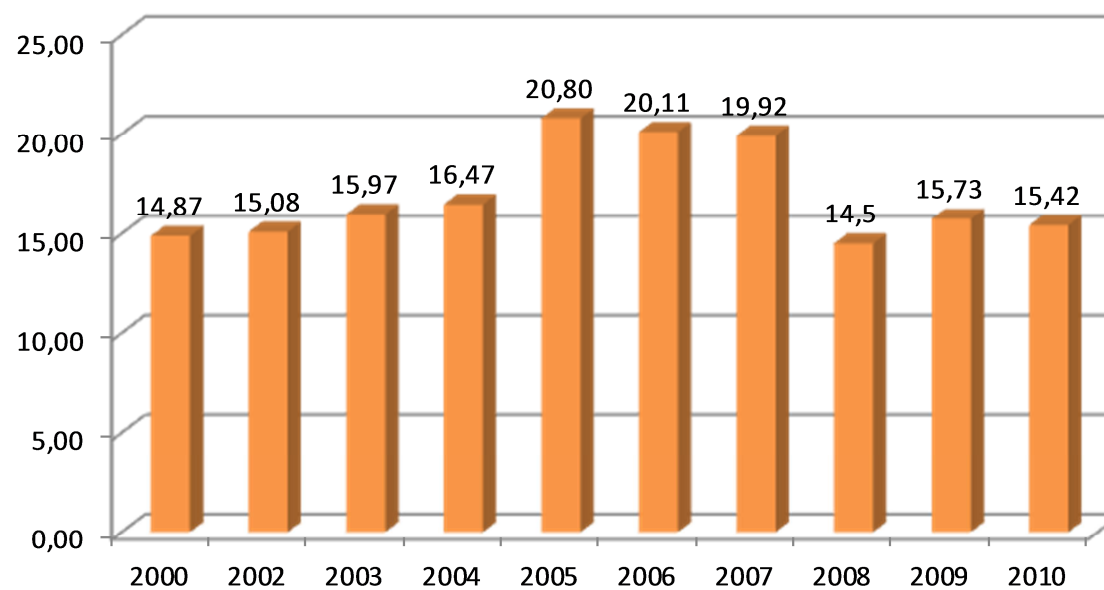
Source: DGITE and own compilation

□ Funding granted to R&D Groups by scientific-technical areas of PAIDI (€). 2002-2010

SCIENTIFIC-TECHNICAL AREAS	2002	2003	2004	2005	2006	2007	2008	2009	2010
AGR	1.341.885,00	917.622,85	1.009.815,91	1.150.465,44	1.362.790,97	1.302.260,09	1.200.810,51	1.191.713,87	508.966,99
BIO	1.352.607,55	885.036,52	1.036.538,80	1.177.641,11	1.312.664,94	1.340.780,32	1.269.635,94	1.246.884,53	569.463,69
CTS	1.993.448,23	1.379.523,56	1.424.041,64	1.837.258,43	2.054.983,57	2.210.378,55	2.093.354,37	2.151.433,23	1.058.502,91
FQM	2.254.357,00	1.534.407,49	1.582.424,96	2.235.528,70	2.378.454,17	2.632.184,76	2.329.171,00	2.163.367,32	948.709,70
HUM	1.886.502,01	1.603.301,18	1.585.761,64	1.694.253,42	1.926.139,70	1.731.562,28	1.942.706,66	2.481.166,63	983.491,19
RNM	1.549.614,00	977.307,58	1.102.647,97	1.302.589,49	1.406.181,63	1.608.126,40	1.533.589,38	1.563.834,56	681.279,62
SEJ	1.109.400,00	980.825,58	951.947,02	1.189.595,62	1.337.256,12	1.380.455,40	1.186.263,25	1.512.983,17	631.006,93
TEP	999.310,00	487.958,95	527.077,38	640.971,78	723.314,10	844.354,80	887.657,11	850.680,46	370.524,79
TIC	884.106,00	735.672,16	765.378,01	847.923,00	1.019.245,51	1.056.361,32	1.097.221,65	1.131.023,91	549.763,19
TOTAL	13.371.229,79	9.501.655,87	9.985.633,33	12.076.226,99	13.521.030,71	14.106.463,92	13.540.409,87	14.293.087,68	6.301.709,01

Note: The last available data are of 2010, pending resolution of 2011
Source: DGITE and own compilation

□ R&D Groups average assessment. 2000-2010



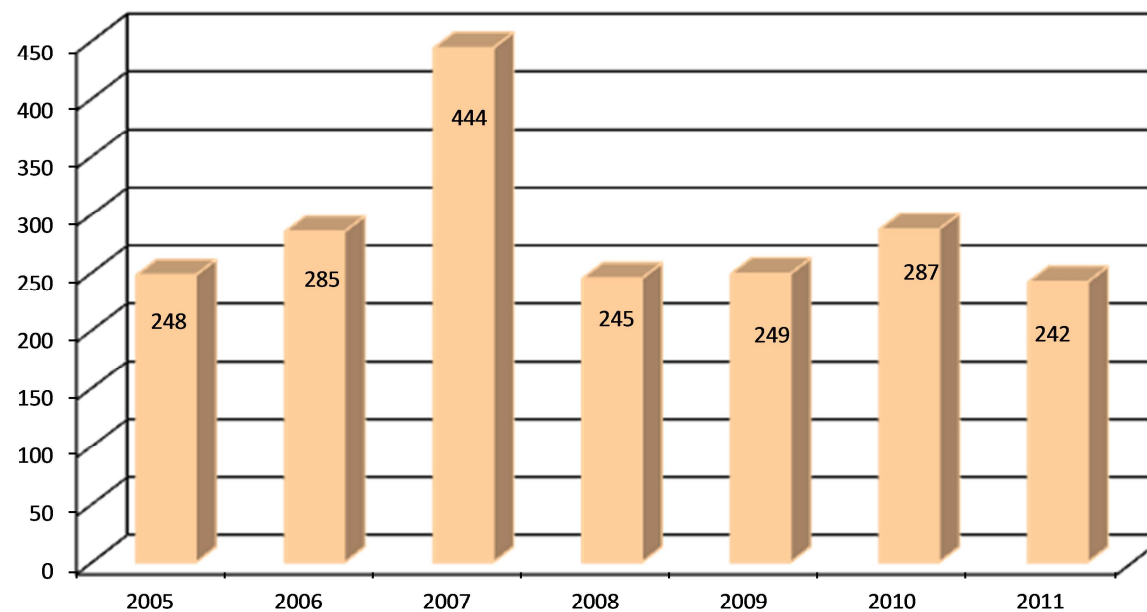
Note: The last available data are of 2010, pending resolution of 2011
Source: DGITE and own compilation

□ R&D personnel by academic qualification in Andalusia. 1997-2011

YEAR	No. Doctors	No. Upper studies	No. Other studies	No. TOTAL
1997	8.202,00	6.543,00	1.288,00	16.033,00
2000	10.212,00	7.192,00	1.470,00	18.874,00
2002	11.158,00	5.780,00	721,00	17.659,00
2003	11.135,00	7.190,00	1.212,00	19.537,00
2004	12.049,00	7.859,00	1.336,00	21.244,00
2005	11.932,00	6.327,00	1.059,00	19.318,00
2006	12.117,00	6.128,00	1.029,00	19.274,00
2007	13.275,00	7.500,00	1.054,00	21.829,00
2008	14.073,00	7.959,00	1.097,00	23.129,00
2009	15.208,00	8.776,00	1.113,00	25.097,00
2010	16.305,00	9.463,00	1.534,00	27.302,00
2011	18.848,00	8.696,00	3.115,00	30.659,00

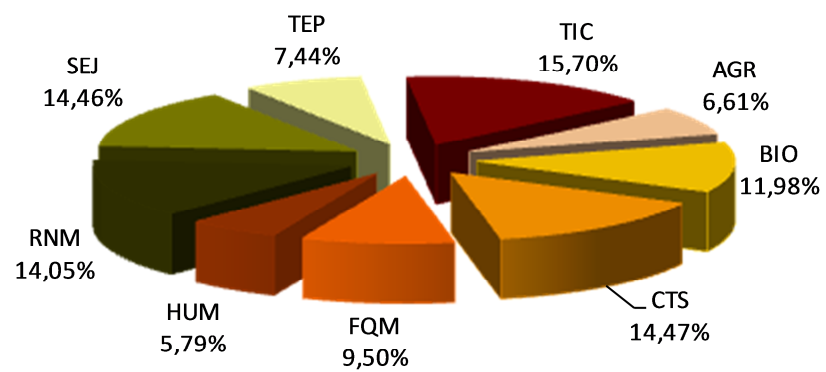
Source: DGITE and own compilation

Number of Excellence Projects in Andalusia. 2005-2011



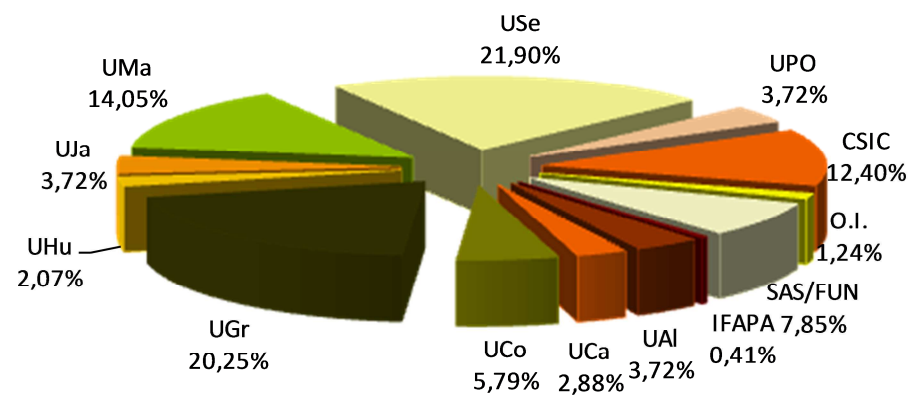
Source: DGITE and own compilation

□ Distribution of Excellence Projects by scientific-technical areas of PAIDI. 2011



Source: DGITE and own compilation

□ Distribution of Excellence Projects by institutions. 2011



Source: DGITE and own compilation

□ Funding granted to Excellence Projects by institutions (€). 2005-2011

INSTITUTIONS	2005	2006	2007	2008	2009	2010	2011
University of Almeria	771.958,00	2.028.327,52	2.325.271,63	2.220.343,60	1.864.914,04	2.026.125,91	1.204.673,75
University of Cadiz	2.259.312,00	3.023.006,62	4.183.543,21	2.745.769,02	2.117.319,44	1.773.644,75	1.440.023,10
University of Cordoba	2.535.150,00	4.453.408,30	3.818.630,99	3.322.077,22	4.231.855,52	2.003.732,51	2.696.615,53
University of Granada	6.294.902,00	11.749.828,52	19.069.323,18	8.907.387,14	10.068.402,88	8.097.540,83	7.274.419,08
University of Huelva	961.900,00	354.730,00	2.600.794,46	1.039.835,73	1.218.581,40	1.337.369,00	468.699,58
University of Jaen	748.450,00	1.534.327,94	2.694.964,29	1.661.318,53	1.160.240,04	4.439.337,90	1.329.130,78
University of Malaga	2.882.545,00	4.041.741,80	10.402.008,26	4.569.637,51	4.436.609,84	3.761.102,19	4.914.776,32
University of Sevilla	7.847.718,00	9.840.328,34	11.907.384,17	9.777.509,46	9.168.907,36	7.562.545,57	8.314.722,54
University of Pablo de Olavide	1.482.872,00	1.716.690,60	4.937.344,62	1.336.287,36	2.525.587,44	1.329.255,44	1.109.563,70
CSIC	3.863.156,00	8.313.410,75	12.957.101,41	8.275.260,18	9.050.879,60	5.083.224,87	5.380.085,38
Other Institutions	705.267,00	1.654.647,23	2.840.752,94	730.829,56	0,00	1.047.882,00	428.963,05
SAS/Foundations	0,00	0,00	0,00	2.812.900,73	1.783.847,36	2.880.344,42	3.062.093,25
IFAPA	n.a.	n.a.	n.a.	n.a.	441.783,00	1.709.837,00	114.885,00
TOTAL	30.353.230,00	48.710.447,62	77.737.119,16	47.399.156,04	48.068.927,92	43.051.942,38	37.738.651,06

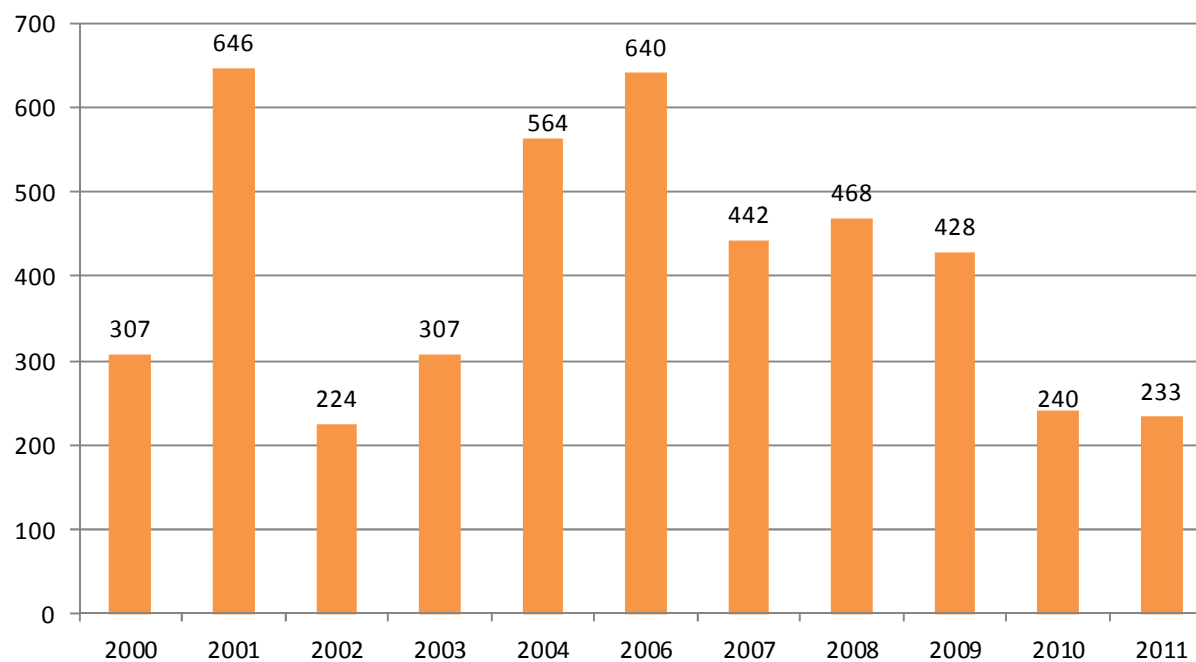
Source: DGITE and own compilation

□ Funding granted to Excellent Projects by scientific-technical areas of PAIDI (€). 2005-2011

SCIENTIFIC-TECHNICAL AREAS	2005	2006	2007	2008	2009	2010	2011
AGR	4.593.606,00	4.180.605,11	7.248.845,50	4.868.936,80	4.592.983,16	9.785.538,70	3.321.860,50
BIO	2.986.513,00	6.066.462,92	13.505.805,97	6.010.774,55	4.679.353,48	4.730.614,60	5.452.496,33
CTS	2.507.335,00	7.079.825,61	3.450.847,38	7.242.145,59	6.561.750,16	8.043.026,26	6.602.822,50
FQM	5.151.440,00	10.438.355,58	13.918.536,01	6.837.230,64	9.139.105,44	4.707.665,42	4.323.933,75
HUM	2.470.343,00	4.199.770,08	8.576.414,63	2.159.975,86	2.589.933,80	864.761,44	1.752.675,16
RNM	4.924.149,00	6.490.876,92	7.867.614,99	5.934.029,25	7.801.449,60	5.053.624,39	5.932.664,89
SEJ	3.046.444,00	3.167.227,56	7.869.898,57	3.714.258,97	2.193.873,76	1.965.578,54	2.373.204,62
TEP	2.378.463,00	3.696.245,34	4.403.507,75	3.782.061,85	5.431.286,56	2.996.464,76	2.997.974,15
TIC	2.294.937,00	3.391.078,50	10.895.648,36	6.849.742,53	5.079.191,96	4.904.668,28	4.981.019,16
TOTAL	30.353.230,00	48.710.447,62	77.737.119,16	47.399.156,04	48.068.927,92	43.051.942,38	37.738.651,06

Source: DGITE and own compilation

Number of incentives granted to enhance researchers mobility and improvement. 2000-2011



Source: DGITE and own compilation

□ Percentage of female researchers recipients of R&D groups and excellence projects incentives. 2005-2010

YEAR	No. women PRs Projects	No. women PRs Groups	No. Projects	No. Groups	% women PRs projects	% women PRs projects	% women PRs projects + Groups
2005	31	328	216	1.733	14,35%	18,93%	18,42%
2006	49	345	330	1.765	14,85%	19,55%	18,81%
2007	77	337	350	1.741	22,00%	19,36%	19,80%
2008	51	405	245	1.960	20,82%	20,66%	20,68%
2009	58	421	249	2.044	23,29%	20,60%	20,89%
2010	67	465	287	2.153	23,34%	21,60%	21,80%

Note: PRs - Principal Researchers

The last available data are of 2010, pending resolution of 2011

Source: DGITE and own compilation

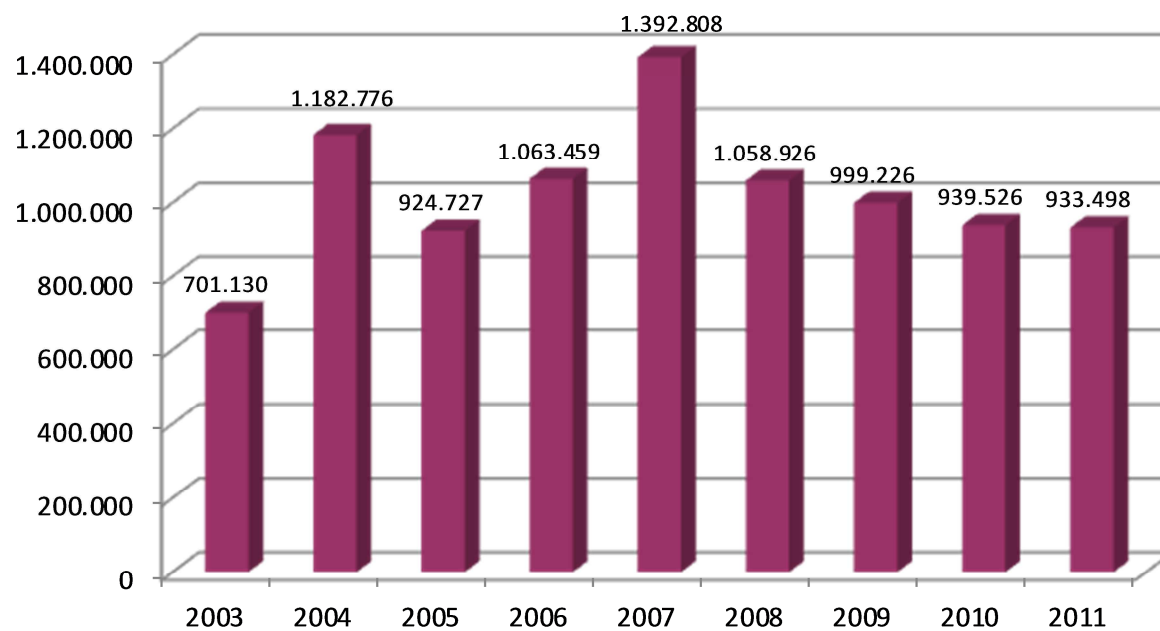
INNOVATION

□ Number of R&D performing companies by level of technology. 2002-2011

YEAR	High tech and medium high tech technologies manufacturing sector	High technologies services	TOTAL
2002	97	60	157
2003	138	82	220
2004	152	80	232
2005	186	124	310
2006	215	177	392
2007	203	251	454
2008	171	239	410
2009	154	276	430
2010	177	344	521
2011	159	336	495

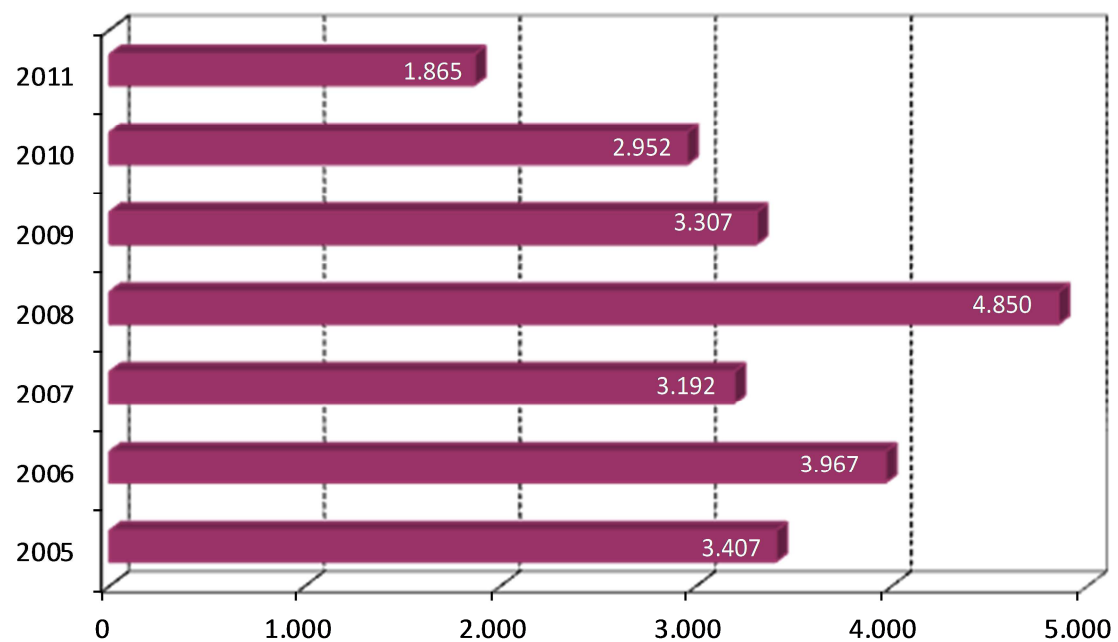
Source: INE and own compilation

□ Total expenditure on innovative activities in Andalusia (thousand €). 2003-2011



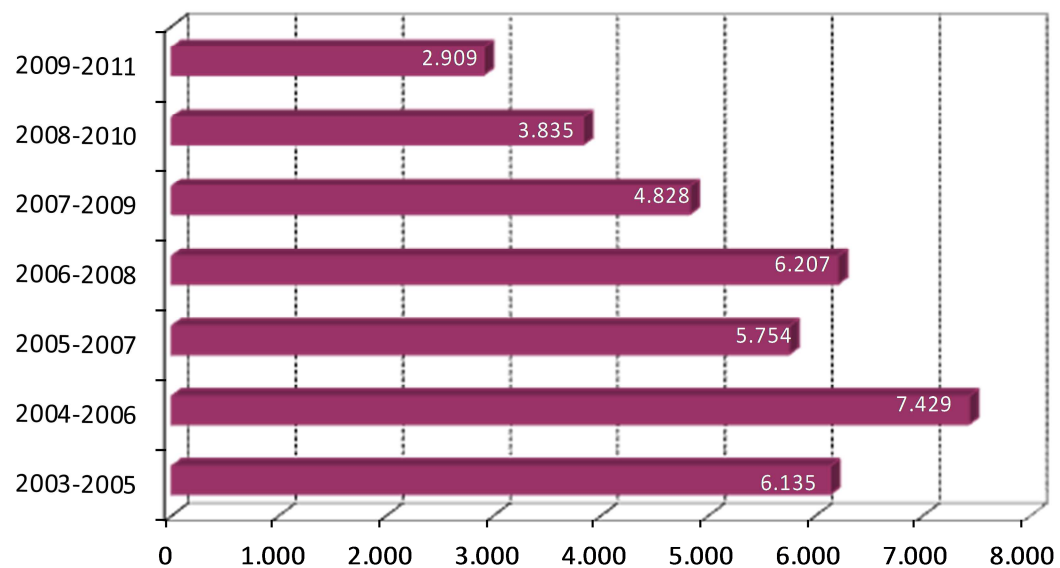
Source: INE and own compilation

□ Number of companies with innovative activities in Andalusia. 2005-2011



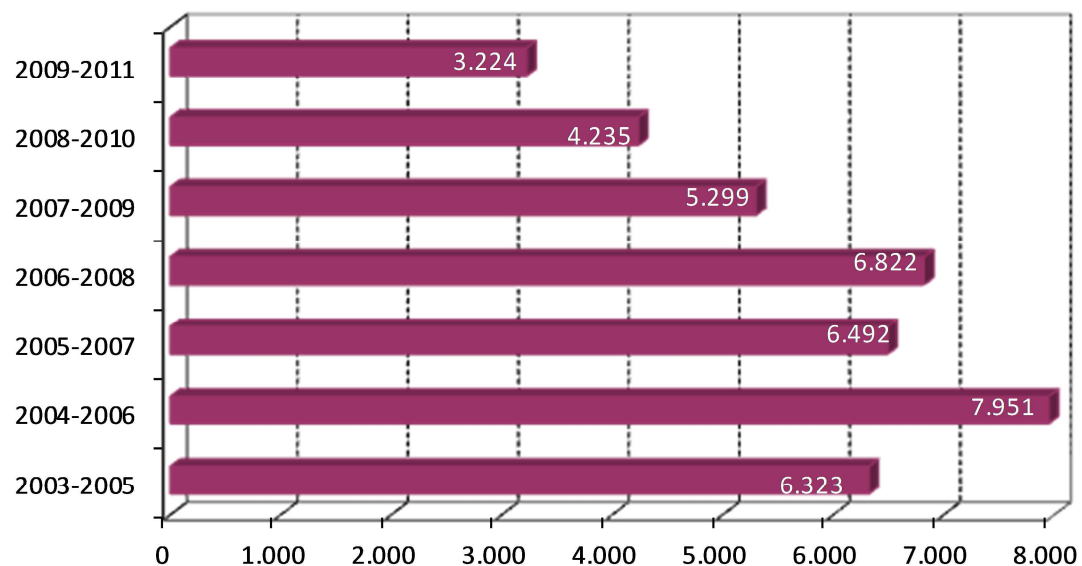
Source: INE and own compilation

□ Number of innovative companies in Andalusia



Source: INE and own compilation

□ Number of EIN companies



Source: INE and own compilation

□ Intensity of innovation in Andalusia. 2005-2011

YEAR	INTENSITY
2005	0,59
2006	0,55
2007	0,72
2008	0,58
2009	0,69
2010	0,75
2011	0,65

Note: Intensity of innovation = (Expenditure on innovative activities / Turnover) x 100
Source: INE and own compilation

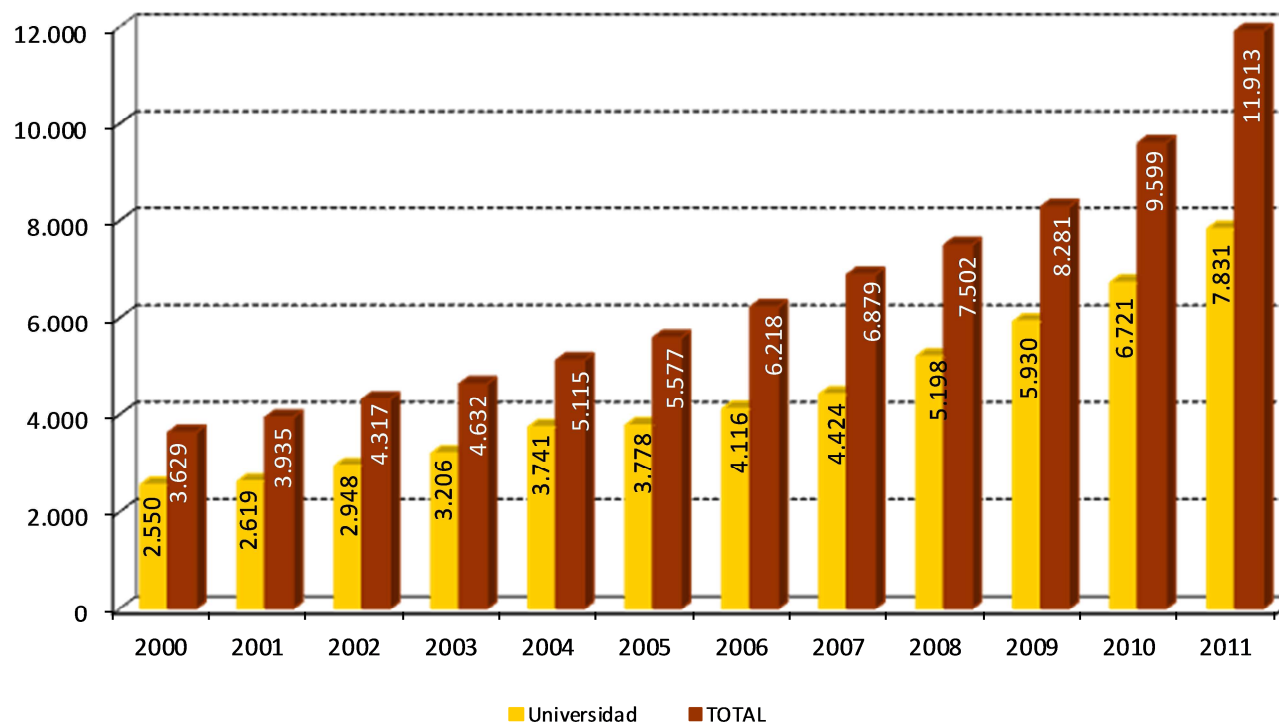
OUTPUTS

□ Number of patent applications and utility models in Andalusia. 1990-2011

YEAR	PATENTS			UTILITY MODELS	TOTAL
	VIA NATIONAL	VIA EUROPEAN	VIA P.C.T		
1990	131	3	1	153	288
1991	128	8	8	192	336
1992	148	5	1	201	355
1993	168	4	5	203	380
1994	177	7	13	183	380
1995	166	2	13	198	379
1996	184	4	16	177	381
1997	201	8	23	198	430
1998	175	7	19	192	393
1999	203	3	23	224	453
2000	229	9	17	247	502
2001	238	6	38	238	520
2002	273	5	38	231	547
2003	267	6	49	231	553
2004	273	7	56	204	540
2005	325	8	80	206	619
2006	334	9	93	198	634
2007	402	16	105	217	740
2008	433	16	120	226	795
2009	453	9	131	222	815
2010	454	16	180	233	883
2011	477	16	185	250	928

Source: OEPM and own compilation

□ Number of ISI documents in Andalusia. 2000-2011



Source: Database of Institute for Scientific Information (ISI) and own compilation

□ Incentives granted to infrastructures, equipment and management by institutions. 2010

CATEGORY	No. institutions	No. projects	Investement granted
ACTA (Agent of Technological Knowledge Accredited)	1	1	257.796,23
CII (Centre and Institute of Research)	2	2	2.314.106,80
CIT (Innovation and Technology Centre)	3	3	973.797,43
CT (Technology Centre)	5	5	4.785.061,44
CTA (Advanced Technology Centre)	1	1	886.470,00
DCT (Space of Scientific-Technological Dissemination)	1	1	450.000,00
ETC (Knowledge Transfer Entity)	3	3	1.277.226,00
OPI (Public Research Body)	6	8	3.638.293,00
PCT (Scientific and Technological Park)	3	3	1.480.620,00
University	8	10	7.641.799,83
TOTAL	33	37	23.705.170,73

Source: DGITE and own compilation

Note: The last available data are of 2010, pending resolution of 2011

□ Summons of the National Plan 2008-2011 in Andalusia by participation modality. 2011

National R&D&I Plan 2008-2011 2008 - 2011			
Modality of Participation	Type of Action	2011	
		No.	Amount
LIA for Human Resources	Training	215	13.454.952,64 €
	Mobility	1.096	1.928.718,80 €
	Recruitment and Incorporation	239	24.265.842,56 €
	Total	1.550	39.649.514,00 €
LIA for R&D&I projects	Fundamental Research	556	50.243.319,27 €
	Applied Research	23	17.226.825,77 €
	Experimental Development	88	37.688.087,52 €
	Innovative Projects	16	5.504.155,34 €
	Total	683	110.662.387,90 €
LIA for scientific and technological infrastructures	Actions in Scientific and Technological Parks (INNPLANTA)	11	95.914.785,25 €
	Scientific-Tecnological Infrastructures	57	633.924,26 €
	Total	68	96.548.709,51 €
LIA for the Use of Knowledge and Transfer of Technology	NEOTEC (Technological transfer, Valuation and EBTs's Promotion)	1	274.903,00 €
	INNIDE (Technological transfer, Valuation and EBTs's Promotion)	3	800.800,00 €
	Total	4	1.075.703,00 €
LIA for deployment and internationalisation of the system	Public-private cooperation	41	39.903.423,10 €
	R&D Internationalisation	32	2.901.423,90 €
	Network	11	595.153,00 €
	Total	84	43.400.000,00 €
Strategic action on health	Human Resources	28	2.133.970,00 €
	R&D&I projects	66	6.033.005,00 €
	Complementary actions of Reinforcement	8	681.600,00 €
	Total	102	8.848.575,00 €
Strategic action on energy and climate change	R&D&I projects	18	9.727.329,88 €
	Total	18	9.727.329,88 €
Strategic action on telecommunications and the information society	AVANZA Digital citizenship	3	363.115,00 €
	AVANZA Training	32	6.031.462,32 €
	AVANZA R&D	30	10.214.482,89 €
	AVANZA Green TIC	17	24.377.588,04 €
	AVANZA Content	18	15.237.990,41 €
	AVANZA New Infrastructures of Telecommunications	10	11.552.014,00 €
Program of Scientific Culture and of the Innovation	Total	110	67.776.652,66 €
	Promotion of the Scientific Culture and the Innovation	31	406.600,00 €
TOTAL	Total	31	406.600,00 €
		2650	378.095.471,95 €

Source: MINECO and own compilation

□ **Projects approved from National Plan of R&D&I sources. 2000-2011**

YEAR	NATIONAL PLAN	
	No.	€
2000	354	12.645.930,00
2001	384	28.900.360,00
2002	420	30.556.907,00
2003	422	36.330.180,00
2004	461	37.299.065,00
2005	450	37.775.844,00
2006	511	51.184.775,07
2007	497	55.648.334,00
2008	460	51.367.464,50
2009	495	54.978.025,97
2010	519	52.470.045,00
2011	471	48.186.143,03

Note: Projects of no oriented fundamental research
Source: MINECO and own compilation

□ Funding granted to R&D projects of National Plan of R&D&I by institutions. 2000-2011

INSTITUTIONS	AMOUNT (euros)											
	2000	2001	2002	2003	2004	2005	2006	2007	2008	2009	2010	2011
University of Almería	420.848,00	1.774.562,00	1.499.570,00	876.600,00	2.005.070,00	1.791.545,00	1.771.077,00	2.958.208,00	2.609.607,00	1.335.235,04	2.121.614,00	1.774.438,38
University of Cádiz	413.273,00	1.959.515,00	1.658.098,00	1.405.625,00	1.652.995,00	3.003.798,00	1.617.636,90	2.568.346,00	4.086.593,50	2.243.703,04	2.611.906,00	1.882.276,00
University of Córdoba	1.643.468,00	2.940.919,00	3.807.210,00	1.827.320,00	3.504.705,00	4.474.043,00	2.731.817,00	4.649.304,00	4.652.087,00	2.537.854,03	3.438.457,00	4.627.152,53
University of Granada	2.433.739,00	5.254.110,00	4.920.179,00	5.935.265,00	6.178.535,00	7.290.059,00	8.393.275,11	11.043.670,00	9.821.086,00	10.110.034,32	8.831.911,00	8.658.739,43
University of Huelva	493.691,00	491.005,00	682.470,00	880.540,00	1.067.685,00	482.902,00	1.287.798,16	1.632.411,00	1.005.026,00	843.854,02	2.422.783,00	1.029.211,48
University of Jaén	680.785,00	622.259,00	374.410,00	758.750,00	778.910,00	826.812,00	1.430.967,78	1.175.152,00	1.232.506,00	2.527.206,09	860.915,00	1.255.350,80
University of Málaga	947.080,00	2.331.310,00	3.031.440,00	5.924.910,00	2.744.505,00	4.331.124,00	6.021.485,14	5.651.789,00	6.018.661,00	4.681.853,09	5.248.617,00	4.714.491,54
University of Sevilla	2.601.485,00	6.128.653,00	5.866.175,00	7.552.170,00	7.302.885,00	6.189.436,00	11.336.395,62	11.756.723,00	7.757.552,00	11.374.726,25	10.502.437,00	6.770.908,32
University of Pablo de Olavide	145.733,00	160.598,00	1.015.290,00	627.140,00	597.160,00	1.214.276,00	1.475.735,36	1.894.618,00	2.186.349,00	1.246.663,06	1.137.884,00	2.267.387,54
C.S.I.C.	2.655.150,00	6.304.892,00	6.633.490,00	9.135.710,00	10.670.585,00	7.493.549,00	14.197.293,00	12.020.503,00	10.469.162,00	17.400.647,02	14.103.881,00	14.467.947,01
Foundations - SAS	0,00	169.180,00	103.500,00	721.500,00	287.500,00	215.390,00	364.210,00	209.280,00	509.410,00	526.350,01	924.440,00	324.280,00
IFAPA	130.588,00	46.447,00	41.734,00	-	28.750,00	182.070,00	91.960,00	88.330,00	332.750,00	108.900,00	108.900,00	90.750,00
Other institutions	80.090,00	0,00	373.800,00	684.650,00	479.780,00	280.840,00	465.124,00	-	686.675,00	41.000,00	156.300,00	323.210,00
TOTAL	12.645.930,00	28.183.450,00	30.007.366,00	36.330.180,00	37.299.065,00	37.775.844,00	51.184.775,07	55.648.334,00	51.367.464,50	54.978.025,97	52.470.045,00	48.186.143,03

Note: Projects of no oriented fundamental research
Source: MINECO and own compilation

□ Funding granted to R&D projects of National Plan of R&D&I by scientific-technical áreas. 2000-2011

SCIENTIFIC-TECHNICAL AREAS	AMOUNT (euros)											
	2000	2001	2002	2003	2004	2005	2006	2007	2008	2009	2010	2011
AGR	3.002.618,00	4.533.695,00	4.577.170,00	4.745.550,00	4.453.840,00	4.689.552,00	6.707.272,00	6.144.743,00	7.085.760,00	7.654.460,06	5.604.720,00	7.434.240,00
BIO	1.569.179,00	5.188.322,00	7.260.605,00	7.933.310,00	6.960.250,00	7.055.986,00	13.388.052,26	10.347.315,00	6.370.650,00	4.397.140,00	3.035.890,00	6.030.640,00
CTS	93.691,00	1.824.775,00	1.058.250,00	1.099.720,00	1.489.510,00	1.651.958,00	2.835.030,00	2.999.348,00	3.686.870,00	7.929.130,04	9.680.000,00	2.220.350,00
FQM	2.533.138,00	5.417.230,00	4.669.275,00	5.220.290,00	6.357.730,00	7.013.027,00	8.412.774,26	9.615.870,00	6.559.773,00	12.411.938,18	9.542.060,00	11.971.425,40
HUM	2.155.475,00	906.097,00	1.981.585,00	2.446.500,00	1.592.740,00	2.132.837,00	1.507.781,00	4.031.962,00	4.295.016,00	5.367.681,21	4.527.941,00	3.549.898,00
RNM	1.777.856,00	4.412.271,00	4.491.532,00	5.515.270,00	5.986.440,00	6.924.848,00	2.916.584,00	7.908.873,00	8.686.227,00	8.109.401,18	9.061.416,00	7.146.623,00
SEJ	802.853,00	785.844,00	665.976,00	1.124.840,00	1.189.960,00	1.096.228,00	3.239.889,95	1.757.041,00	2.148.960,00	1.562.473,14	2.605.130,00	1.795.585,55
TEP	321.388,00	2.533.016,00	2.553.550,00	1.903.535,00	3.639.675,00	3.721.614,00	7.349.310,10	6.161.683,00	8.514.225,50	5.167.426,12	6.897.847,00	6.566.863,24
TIC	389.732,00	3.299.110,00	3.298.964,00	6.341.165,00	5.628.920,00	3.489.794,00	4.828.081,50	6.681.499,00	4.019.983,00	2.378.376,04	1.515.041,00	1.470.517,84
TOTAL	12.645.930,00	28.900.360,00	30.556.907,00	36.330.180,00	37.299.065,00	37.775.844,00	51.184.775,07	55.648.334,00	51.367.464,50	54.978.025,97	52.470.045,00	48.186.143,03

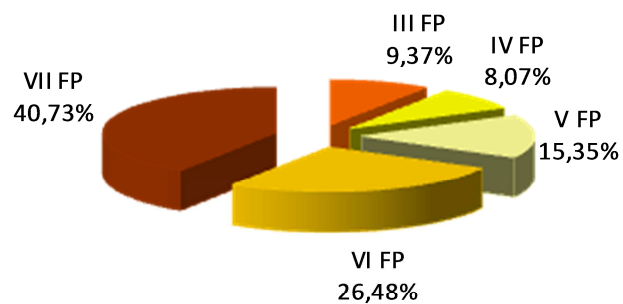
Note: Projects of no oriented fundamental research
Source: MINECO and own compilation

□ Andalusian participation in the EU Framework Programme. 1990-2011

FRAME PROGRAMME	No. activities			AMOUNT	RETURN
	Applied	Granted	%	Amount Granted (millions of €)	
III Programme (1990-94)	759	180	23,72%	18,5	3,20%
IV Programme (1995-98)	672	147	21,88%	15,9	3,70%
V Programme (1998-2002)	959	230	23,98%	30,3	4,80%
VI Programme (2003-2006)	1.078	233	21,61%	52,3	5,80%
VII Programme (2007-2011)	800	234	29,25%	80,4	6,10%

Source: CDTI and own compilation

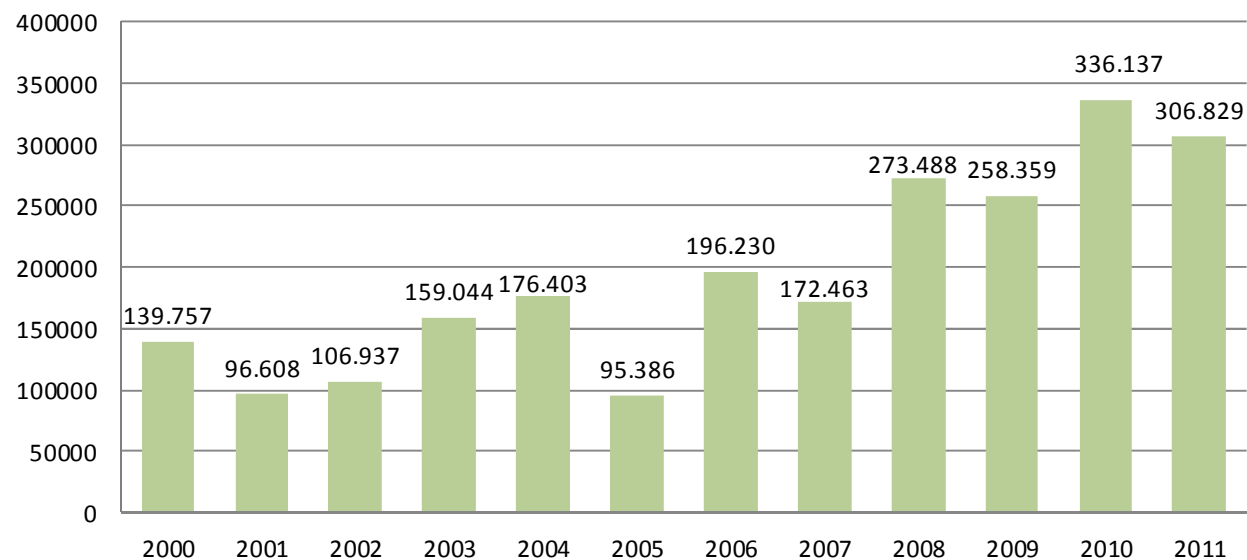
□ **Distribution of the Funding granted by the EU Framework Programme Editions. 2011**



Source: CDTI and own compilation

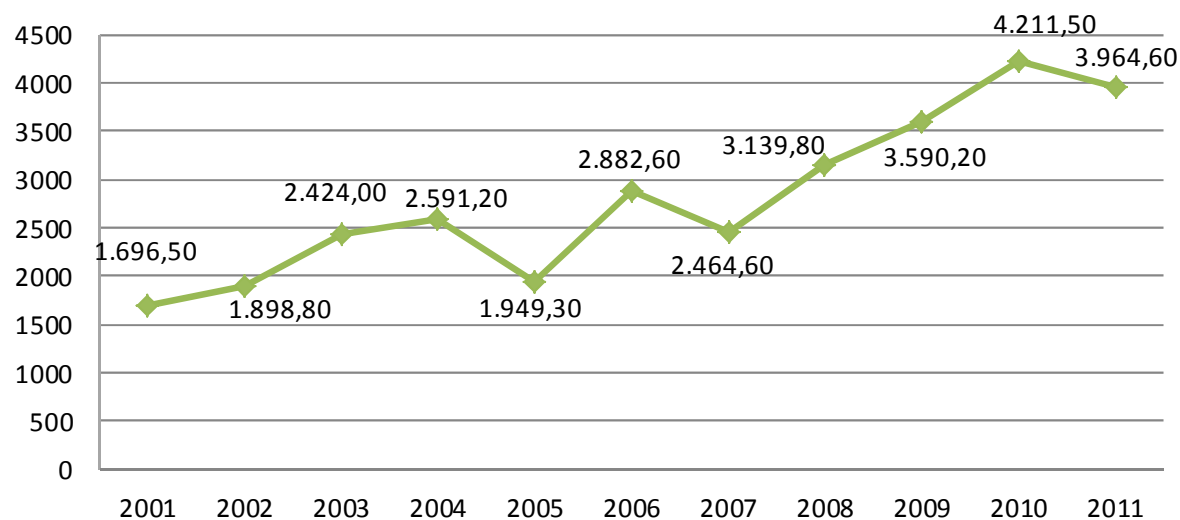
HIGH TECHNOLOGY

□ R&D Internal expenditure in high tech sectors (thousand €). 2000-2011



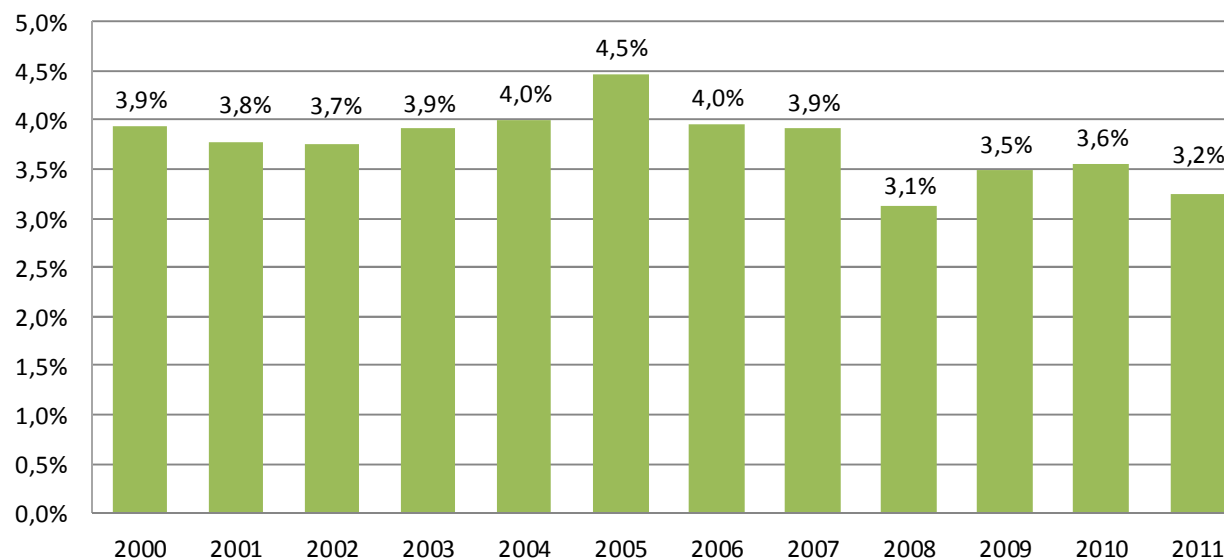
Source: INE and own compilation

□ R&D personnel (FTE) employed in high tech sectors. 2001-2011



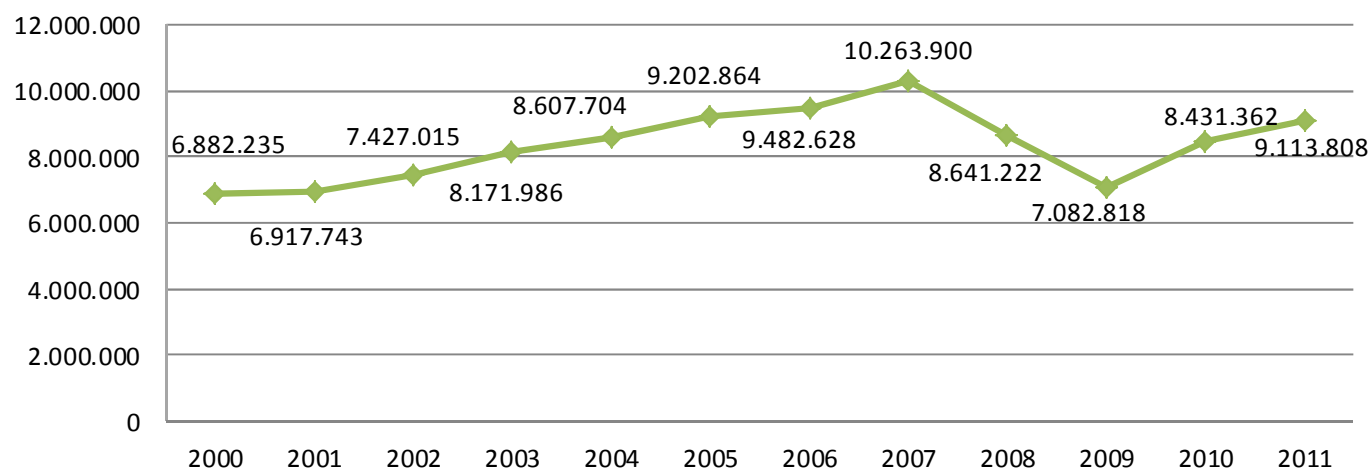
Source: INE and own compilation

Percentage of employed persons in high tech sectors to total employed persons. 2000-2011



Source: INE and own compilation

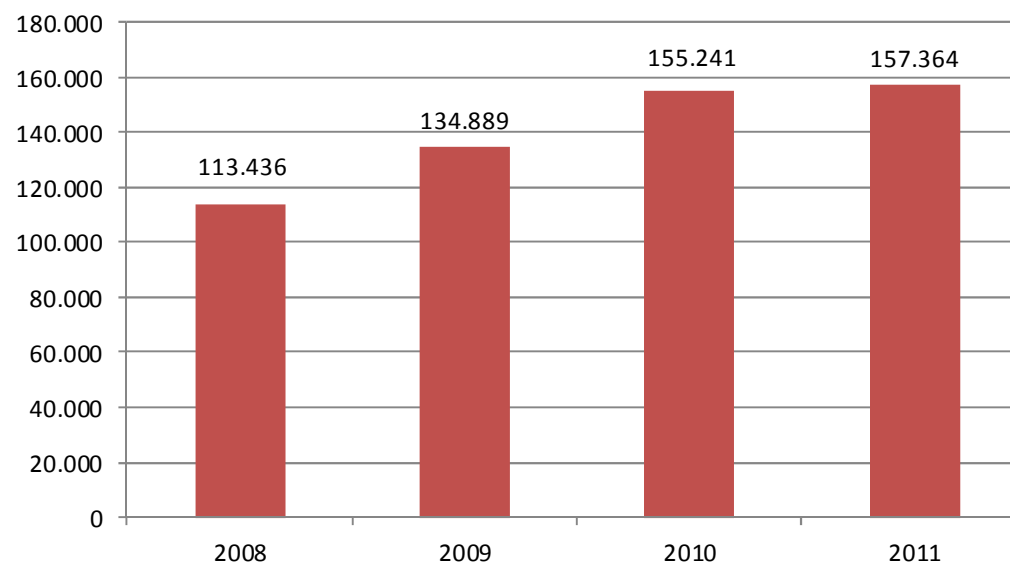
□ Turnover in high-tech sectors (thousand €). 2000-2011



Source: INE and own compilation

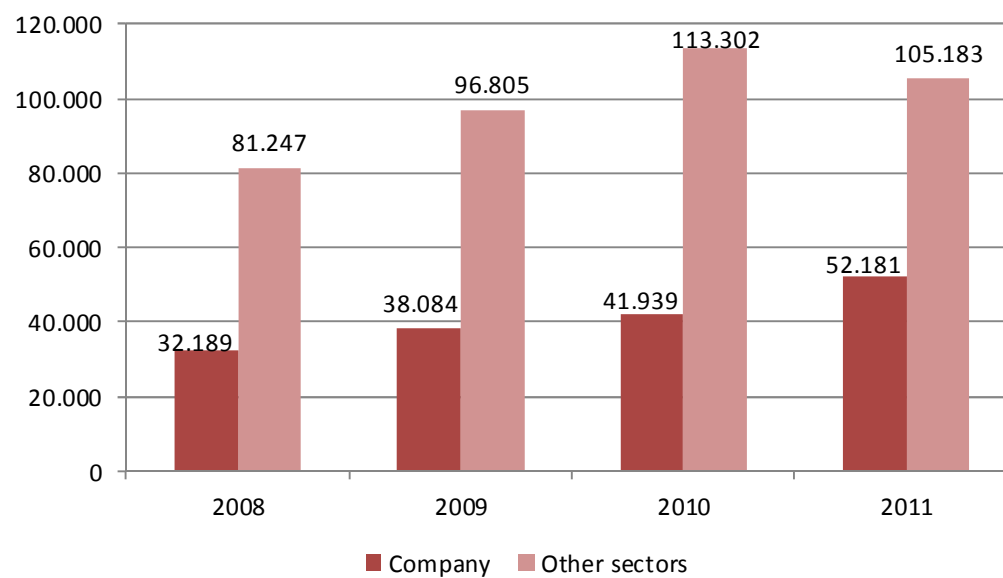
BIOTECHNOLOGY

□ R&D Internal expenditure in biotechnology in Andalusia (thousand €). 2008-2011



Source: INE and own compilation

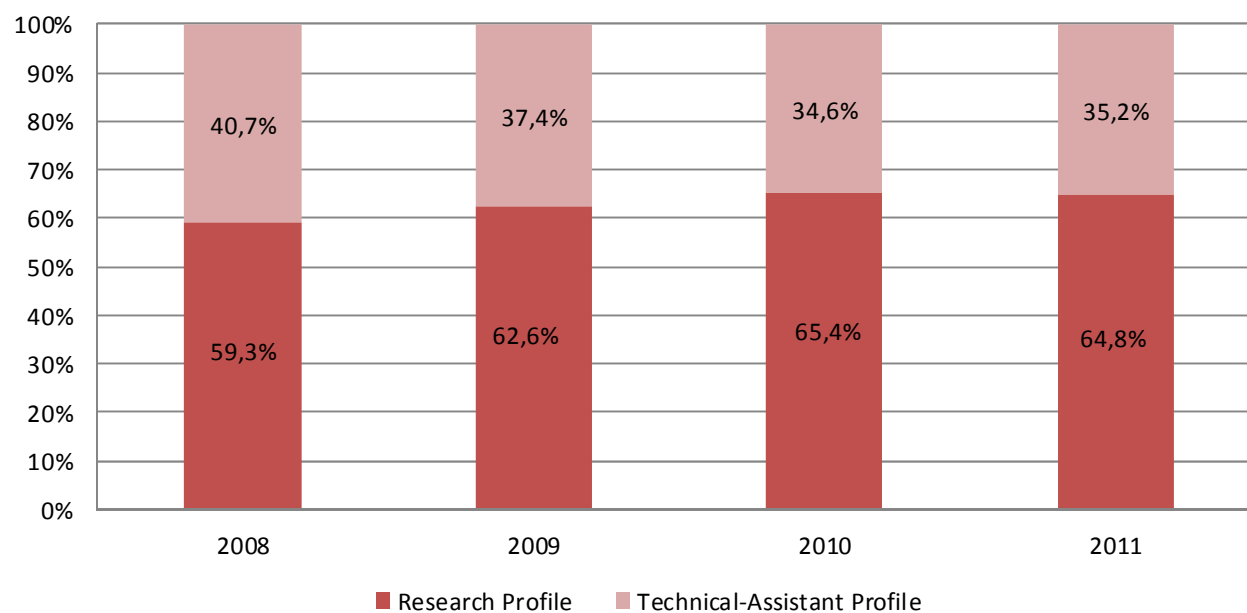
□ R&D Internal expenditure in biotechnology in Andalusia by sectors of performance (thousand €). 2008-2011



Source: INE and own compilation

Note: The remaining sectors including the Public Administration, Higher Education and Private Non Profit Institutions

Percentage of employed persons in biotechnological activities in R&D (FTE) for profiles in Andalusia. 2008-2011



Source: INE and own compilation

■ ■ ■ ABBREVIATIONS AND ACRONYMS

ACTA: Technological Knowledge Accredited Agent

ADMON: Administration

AGR: Agrifood

BIO: Biology and Biotechnology

CDTI: Industrial Technological Development Centre

CII: Research Centre and Institute

CIT: Technological Innovation Centre

CSIC: Spanish National Research Council

CT: Technological Centre

CTA: Advanced Technological Centre

CTS: Health Sciences and Technologies

DCT: Space of Scientific-Technological Dissemination

DGITE: General Direction for Research, Technology and Enterprise

EIN: Innovative Businesses or companies with innovation underway or unsuccessful

EIT: INE Technological Innovation Survey

ETC: Knowledge Transfer Entity

EU: European Union

FP: European Union Framework Programme

FQM: Physics, Chemistry and Mathematics

FTE: Full Time Equivalent

GPB: Gross National Product

GDP mp: Gross domestic product at market prices

HUM: Humanities

IFAPA: Research and Training Institute of Agriculture, Fisheries, Food and Ecological Production

ILA: Instrumental Line of Action

INE: National Statistics Institute

ISI: Institute for Scientific Information

MECS: Ministry of Education, Culture and Sport

MINECO: Ministry of Economy and Competitiveness

OEPM: Spanish Patent and Trademark Office

O.I.: Other Institutions

OPI: Public Research Body

PAIDI: Andalusian Research, Development and Innovation Plan

PCT: Scientific and Technological Park

P.C.T.: Patent Cooperation Treaty

PNPI: Private Non Profit Institutions

PRs: Principal Researchers

PIE: Business Innovation Park

R&D: Research & Technological Development

R&D&I: Research & Technological Development & Innovation

RNM: Natural Resources and Environment

SAS / Foundations: Andalusian Health System / Foundations

SEJ: Social, Economic and Legal Sciences

SICA: Andalusian Scientific Information System



TEP: Production Technologies

TIC: Information and Communication Technologies

UAl: University of Almeria

UCa: University of Cadiz

UCo: University of Cordoba

UGr: University of Granada

UHu: University of Huelva

UJa: University of Jaen

UMa: University of Malaga

Univ.: University

UPO: University Pablo of Olavide

USe: University of Seville

■ ■ ■ GLOSSARY OF TERMS

INNOVATIVE ACTIVITY: All the scientific, technological, organizational, financial and commercial activities which lead actually or potentially to the implementation of innovations. Some of these activities are themselves innovative; others are not novel activities however they are necessary for the implementation of innovations. Innovation activities also include R&D that is not directly related to the development of a specific innovation. (Oslo Manual, 2005)

HIGH TECHNOLOGY: The sectors and products within the so-called high technology can be defined, generically, as those which, given their degree of complexity, require a continuous effort in research and a solid technological base. (Methodology of High Technology Indicators, INE)

TURNOVER: This includes the amounts invoiced by the company during the reference year for the provision of services and sale of goods that are the object of the company's trade. Deductible VAT invoiced by suppliers will not be included in the valuation. These are accounted for, including the taxes paid on the goods and services, with the exception of the VAT paid by the client. They are accounted for in net terms, deducting returns of sales, as well as volume discounts. Neither cash discounts nor discounts for prompt payment are deducted. (INE Methodology)

FTE: The sum of the staff working full-time, and the fractions of time of the staff working part-time, for R&D activities. (EIT, INE)

EIN COMPANIES: Innovative businesses or companies with innovations underway or unsuccessful. (Statistics INE)

INNOVATIVE FIRM: The company which has implemented an innovation during the period under review. (Oslo Manual, 2005)

INNOVATION EXPENDITURES: Expenditures are measured on the basis of the sum of innovation activities over a specific period of time ... An alternative would be to collect information on total expenditures on activities related to individual innovations. (Oslo Manual, 2005)

INTRAMURAL EXPENDITURES ON R&D: Intramural expenditures are all expenditures for R&D performed within a statistical unit or sector of the economy during a specific period, whatever the source of funds. (Frascati Manual, 2002)

R&D: Research and experimental development (R&D) comprise creative work undertaken on a systematic basis in order to increase the stock of knowledge, including knowledge of man, culture and society, and the use of this stock of knowledge to devise new applications. (Frascati Manual, 2002)

INNOVATION: Implementation of a new or significantly improved product (good or service), or process, a new marketing method, or a new organizational method in business practices, workplace organization or external relations. (Oslo Manual, 2005)

PATENT: Title that recognizes the right to exclusively exploit a patented invention, preventing others from the manufacturing, sale or use of such invention without the consent of the holder. The patent may refer to a new procedure, new apparatus, a new product or the perfection or improvement of same. The patent is valid for twenty years since the submission application date. To keep a patent in force concession annuities are to be paid. There are three International patent application procedures:

- National: By means of the filing of a patent application in each one of the states in which protection is sought. For example at the Spanish Patent and Trademark Office (SPTO)
- European: The European Patent system allows to obtain protection by means of a European direct patent application with the designation of those European States in which protection is sought, and which are part of the European Patent Convention (24 countries). The European patent application is processed by the European Patent Office (EPO) and the granting of the patent has the same effect as a national patent in all those states in which it is granted.

- International P.C.T. (Patent Cooperation Treaty): The PCT system allows for protection to be claimed for the invention in each one of the States which are party to the international treaty (115 countries as of 1st January 2002), by means of one sole application known as international application. (EIT Methodology, INE)

R&D PERSONNEL: Number of personnel employed in R&D:

- Researchers are professionals engaged in the conception or creation of new knowledge, products, processes, methods and systems and also in the management of the projects concerned.
- Technicians and equivalent staff are personnel whose main tasks require technical knowledge and experience in one or more fields of engineering, physical and life sciences or social sciences and humanities. They participate in R&D by performing scientific and technical tasks involving the application of concepts and operational methods, usually under researchers' supervision. Equivalent staff performs the corresponding R&D tasks under the researchers' supervision in the social sciences and humanities.
- Other supporting staff includes skilled and unskilled craftsmen, secretarial and clerical staff participating in R&D projects or directly associated with such projects. (Frascati Manual, 2002)